



PARKS &  
RECREATION

# CHARTER TOWNSHIP OF SUPERIOR PARKS & RECREATION COMMISSION MEETING

The Parks & Recreation Commission

MARCH 2025

Regular Meeting

will be held on

MONDAY, MARCH 24, 2025, @ 6:30 p.m.

at

SUPERIOR TOWNSHIP HALL

3040 N. Prospect Rd.

Superior Township, MI 48198

(N/E Corner of Cherry Hill & Prospect)

Superior Township will provide necessary reasonable auxiliary aids and services to individuals with disabilities upon four (4) business days' notice to the Township. Individuals requiring auxiliary aids or services should contact Superior Charter Township Parks & Recreation Department.

For additional info call: (734) 480-5502  
or email: [superiorparks@superior-twp.org](mailto:superiorparks@superior-twp.org)

# CHARTER TOWNSHIP OF SUPERIOR PARKS & RECREATION COMMISSION MEETING

Sharon Bryant-Phillips	Nahid Sanii-Yahyai
Martha Kern-Boprie	Jack Smiley
Curtis Freeman	Gregory Vessels
Sarah Devereaux	Matthew Yahyai

**Superior Township Parks & Recreation Commission**

**MARCH 2025**

**Regular Meeting**

**will be held**

**MONDAY, MARCH 24, 2025 @ 6:30p.m.**

**at**

**SUPERIOR TOWNSHIP HALL**



**PARKS &  
RECREATION**



**PARKS & RECREATION COMMISSION REGULAR MEETING  
MARCH 24, 2025 @ 6:30 P.M.  
AGENDA**

- 1) CALL TO ORDER**
- 2) ROLL CALL**
- 3) FLAG SALUTE**
- 4) AGENDA APPROVAL**
- 5) PRIOR MEETING MINUTES APPROVAL**
  - A) February 24, 2025; Regular Meeting
- 6) CITIZENS PARTICIPATION**
- 7) REPORTS**
  - A) Chairperson
  - B) Director
  - C) Board Liaison
  - D) Board Meeting Attendee
  - E) Park Steward
  - F) Safety
- 8) COMMUNICATIONS**
  - A) Dixboro Summer Days Flier
  - B) Landowners Resource List
  - C) SMLC 2025 Fact Sheet and Forest to Mi Faucet Initiative
  - D) Legacy Land Conservation Information
- 9) OLD BUSINESS**
  - A) *Memorial Tree & Bench Program*
  - B) *Mission Statement Review*
  - C) *"Birdsong" Property Appraisal Engagement Letter*
  - D) *"Rock" Property Committee Update*
- 10) NEW BUSINESS**
  - A) *Easter Egg Hunt Volunteers; Saturday, April 12<sup>th</sup>*
  - B) *Earth Day Tree Planting & Kite and Rocket Day Volunteers; Saturday' April 26<sup>th</sup>*
- 11) BILLS FOR PAYMENT**
  - A) *February 25, 2025 – March 24, 2025*
- 12) FINANCIAL STATEMENT**
  - A) *February 2025 Revenue & Expenditure Report*
- 13) PLEAS AND PETITIONS**
- 14) ADJOURNMENT**

**Next Meeting: April 28, 2025 @ 6:30pm**

SA.

Superior Charter Township Parks & Recreation Commission  
Regular Meeting  
February 24, 2025

Proposed Minutes

1. Call to Order  
The meeting was called to order at 6:30 pm by Chair Nahid Sanii-Yahyai.
2. Roll Call  
Park Commissioners present: Nahid Sanii-Yahyai, Greg Vessels, Martha Kern-Boprie, Curtis Freeman, Matthew Yahyai, Jack Smiley, Sharon Bryant-Phillips  
  
Park Commissioners absent: none  
  
Others present: Trustee Sarah Devereaux; Trustee Dana Greene; Juan Bradford, Parks & Recreation Director; Brenda Baker, Susan LaCroix
3. Flag Salute  
Chair Nahid Sanii-Yahyai led those assembled in the Pledge of Allegiance to the Flag.
4. Agenda Approval  
It was moved by Curtis Freeman and supported by Nahid Sanii-Yahyai to approve the agenda with the addition of New Business item B. potential roadside clean-up in 2025 and New Business item C. Memorial Tree and Bench Program. The motion carried.
5. Prior Meeting Minutes Approval
  - A. January 27, 2025  
It was moved by Greg Vessels and supported by Curtis Freeman to approve the minutes of 1/27/2025 with the following corrections: Old Business item A. 2025 Farming Agreement correct the number of acres in the first sentence to 188. In the roll call vote, correct the spelling of "Sannie-Yahyai" to "Sanii-Yahyai" and add "Smiley voted Yes". In Pleas and Petitions, after the sentence ending "...to fully participate" insert the sentence "Nahid Sanii-Yahyai asked if another trustee could substitute for Sarah at times when she cannot attend the Park Commission meetings." The motion carried.
6. Citizen Participation
7. Reports
  - A. Chairperson  
Chair Nahid Sanii-Yahyai welcomed Trustee Sarah Devereau as Board Liaison to the Parks & Recreation Commission. Nahid also noted that several communities, including the city of Ypsilanti promoted "No May Mow" to encourage people to let their lawns grow during May which provides nutrition to birds and insects that help pollinate other plants. She would like to see Superior Township promote this. Discussion took place among park commissioners. Martha Kern-Boprie noted that this would be a matter of the township not enforcing lawn mowing ordinances during May. It is permissive, not required that people not mow lawns in May. Sarah Devereaux noted that not mowing can allow tick populations to expand, and she recommends mowing near walkways and paths in parks. Nahid said she would like to pursue the "No May Mow" concept in Superior Township.
  - B. Director  
Juan Bradford submitted a written report. He added some detail to the update on the conservation easement held by the township on a portion of the property where Superior Farm & Garden is located. He also informed the Park Commission that he enrolled the Superior Township Park

Commission with "Grant Station" for one year. Grant Station is an organization that can assist with locating grant opportunities and applying for them. The cost for a one year enrollment was \$99.

C. Board Liaison

Trustee Sarah Devereaux reported on Township Board action in January and early February. She noted that Martha Kern-Boprie's board attendee report was thorough, and added clarification to the positions Keith Lockie resigned from and retained. Mr. Lockie resigned from the position of Twp Controller. He retained the position of Utility Dept accountant. His compensation rate for both positions has been the same. Those rates will be re-examined. She commented that Martha's report that health insurance benefit cost for all township employees was \$700,000 was a bit high. She will look it up, and update the Park Commission later in the meeting.

D. Board Meeting Attendee

Martha Kern-Boprie attended the Township Board meeting on 2/18/25 and submitted a written report on that meeting.

E. Park Steward

Juan Bradford has received no contact from Ellen Kurath.

F. Safety

Juan Bradford reported there were no accidents or injuries in the past month.

It was moved by Martha Kern-Boprie and supported by Curtis Freeman to receive the reports. The motion carried.

8. Communications

- A. Educational: Parks & Recreation Commission Mission Statement
- B. Superior Scenes Spring 2005 Newsletter

It was moved by Martha Kern-Boprie and supported by Curtis Freeman to receive the communications. The motion carried.

9. Old Business

A. 2025 Special Events Flyer

The 2025 Special Events Flyer was provided for information only.

B. Land Preservation Meeting: March 10, 2025

A meeting is scheduled on March 10, 2025, from 7:00 – 8:30 pm at the township hall about opportunities, strategies and tools to preserve natural and agricultural areas. Organizations involved include Legacy Land Conservancy, Southeast Michigan Land Conservancy, Huron River Watershed Council, Washtenaw County Parks & Recreation. Everyone is welcome to attend. RSVP is appreciated at telephone 734-302-8715.

C. "Rock" Property Committee Update

Jack Smiley reported that the "Rock" Property Committee seeks public meetings to obtain input on use of the "Rock" Property. The Fish and Wildlife grant decision may be delayed. Sarah Devereaux offered to facilitate meetings, as this is her profession.

10. New Business

A. 2025 4 WD Pickup Truck Quotes

Juan Bradford obtained three quotes for a Ford F250 Pickup Truck. All three are for new vehicles. This purchase was planned for in the 2025 budget. The new truck will replace the 2021 Dodge half-ton pickup truck that is in very poor condition and is beyond repair.

\$45,855.00 Gene Butman Ford, Ypsilanti MI  
\$47,774.00 Gorno Ford, Woodhaven MI  
\$48,997.92 Gene Butman Ford, Ypsilanti MI

Martha Kern-Boprie asked why the same dealership Gene Butman Ford had two F250 trucks with a price difference of more than \$3,000. Juan explained that the higher cost vehicle had more options, and those options were not necessary for Park Department use.

It was moved by Martha Kern-Boprie and supported by Sharon Bryant-Phillips to approve purchase of an F-250 Ford Pickup Truck from Gene Butman Ford dealership as detailed in their quote dated 2/04/2025 for a price not to exceed \$45,855.00. The motion carried.

B. Potential 2025 Roadside Clean-Up

There has been discussion among township boards and staff about the potential for another roadside clean-up in 2025. Juan Bradford commented that he was very concerned about the potential of injury to the volunteers working along busy public roads. He also stated he believes the responsibility for a roadside clean-up should sit with the Township Board. Sarah Devereaux noted that it is important to have clean communities and that Superior Township looked so much better after the 2024 roadside clean-up. She would like to find a way to clean the roadsides again in 2025. Discussion shifted to mechanisms to prevent littering and dumping. Sharon Bryant-Phillips asked if Superior Township has a littering ordinance. Martha Kern-Boprie commented that littering ordinances are difficult to enforce, because to prosecute a violation one has to identify the individual dumping the trash, not only the vehicle seen near the dumping. Sharon stated she recalls anti-littering campaigns in Detroit that required one to have a trash bag in one's vehicle. This would not prevent one from dumping the bag of trash, and would not impact dumping of mattresses and other large objects. Greg Vessels noted the non-profit organization "House into Home" accepts used furnishings to assist people with setting a home. This non-profit could be promoted as a positive way of disposing of un-needed items. Curtis Freeman commented we could look for opportunities to collaborate when roads are blocked from traffic, to clean the roadsides then. He cited the time when trees will be cut along Geddes Road to prepare for the non-motorized pathway as such an opportunity. Sarah said she will discuss the idea of a roadside clean-up with Supervisor Emily Dabish Yahkind.

C. Memorial Tree & Bench Program

Juan Bradford informed the Park Commission that occasionally he receives requests from people to memorialize a person with donation of a tree or a bench in one of the township parks. Several such donations have been made in the past. Juan drafted the memorial Tree & Bench Program to establish a process and parameters for memorials of this nature. Park Commissioners discussed the proposed program. No action was taken. Action may be taken at a future meeting.

11. Bills for Payment

It was moved by Matthew Yahyai and supported by Curtis Freeman to approve the bills totaling \$31,975.50 through 2/24/2025. The motion carried.

12. Financial Statement

A. January 2025 Revenue & Expenditure Report

It was moved by Greg Vessels and supported by Matthew Yahyai to receive the January 2025 Revenue and Expenditure Report. The motion carried.

13. Pleas and Petitions

Martha Kern-Boprie suggested adding craft projects and/or nature education to winter events, especially when the weather is bad.

Discussion took place about garden plans for Willow Run Acres (WRA).

Sarah Devereaux found the cost of health insurance for township employees in 2025.

\$469,237.32	premium cost
<u>\$219,550.03</u>	wellness bonuses
\$688,787.35	

Discussion took place of options for Sarah to fulfill her board liaison role when she has to travel at the same time as park commission meetings. One option is to submit a written report to include in the park commission packet. Another option would be to have another township board member attend in her place.

14. Adjournment

It was moved by Curtis Freeman and supported by Greg Vessels to adjourn at 7:55 pm. The motion carried.

Submitted by,  
Martha Kern-Boprie  
Park Commissioner and Secretary



PARKS &  
RECREATION

**DIRECTORS REPORT  
MARCH 24, 2025**

7B

- Next Board of Trustees Meeting: Monday, April 21, 2025 @ 7:00pm
- Parks & Recreation Commission Attendee: Commission Secretary Kern-Boprie
  
- The Land Preservation meeting held on Marh 10<sup>th</sup> had 23 residents in attendance. I was told by more than one of the presenters that they were very happy with the turnout. I have included some of the information from the meeting in the Communications portion you packet.
  
- The DNR requires a second appraisal of the "Birdsong" property due to the +\$1,000,000 value. Earlier today I met on-site with a representative of the appraisal company, Peoples Choice to walk the site and begin gathering information . Appraisals should be completed by the first week of May, at that time I will submit them to both the DNR and Ducks Unlimited for their review. Additionally, Commissioner Smiley and I met with two representatives of Ducks Unlimited last week to visit both the "Birdsong" and Rock" properties. Commissioner Smiley and I can elaborate more on this topic later in the agenda.
  
- The 2025 Ford F-250 pickup truck that we ordered to replace a 2001 Dodge Ram pickup used by the park maintenance staff will be delivered sooner that expected. We had originally expected delivery in early to mid-May, but we have been notified by Gene Butman Ford that we can expect delivered in early April.
  
- In the next few weeks, as the grass begins to grow and cutting operations get under way, park maintenance staff will evaluate the repairs that were made to the 2013 Toro 4WD mower over the winter. If they do not believe the mover is able to perform as required for trail mowing, we will begin soliciting quotes for a new 4WD mower. This is an expense that we had anticipated, and you have approved in the 2025 Park Maintenance budget.
  
- Park Maintenance staff will begin working their summer schedule next Monday, March 31<sup>st</sup>. Summer hours are Monday thru Thursday, 7:00am – 3:30pm

Respectfully Submitted,

Juan Bradford



March 17, 2025

## Board of Trustees Meeting Report

*Prepared for the Parks & Recreation Commission by Sarah Devereaux (Trustee)*

---

### **Call to Order**

Shortly after Supervisor Dabish-Yahkind called the meeting to order, Trisché Duckworth (Executive Director and Founder of the Ypsilanti-based nonprofit Survivor's Speak) used a bullhorn to announce that she was protesting the meeting, and that "there will be no meeting tonight" until a report and several related agenda items submitted by Trustee Dana Greene were re-added to the agenda. Trustee Greene submitted these items by the deadline to Clerk Robinson for inclusion in the agenda, but they were later removed by Supervisor Dabish-Yahkind.

The items that Trustee Greene submitted related to multiple personnel issues, including:

1. Hiring of a Human Resources Director
2. Full termination of Keith Lockie from the Township
3. Rehiring of Landis Smith as the Utilities Department Billing Specialist and Residential Liaison

When Ms. Duckworth declined to yield her position, Fred Lucas (Township attorney) advised the Board to call a recess and call the Washtenaw County Sheriff to ensure the situation did not escalate further. During the recess, Trustee Greene spoke privately with Ms. Duckworth, and after deputies arrived, she voluntarily took her seat. The meeting then proceeded with the Pledge of Allegiance and Roll Call.

### **Approval of Agenda**

There were several changes made to the agenda, including:

1. New Business: Adding a Resolution to hire an HR Director (Trustee Greene)
2. New Business: Adding a Resolution to fully terminate Keith Lockie (Trustee Greene)
3. New Business: Adding a Resolution to rehire Landis Smith (Trustee Greene)
4. New Business: Adding Trustee Greene's presentation to the Board (Trustee Greene)
5. Discussion: Moving the Community Development Block Grant to New Business (Supervisor Dabish-Yahkind)

All changes to the agenda were seconded, and the items that Trustee Greene proposed were voted on and added to the agenda, per Robert's Rules of Order. These votes were not unanimous and there was some (tense) discussion and confusion surrounding the Supervisor's reasoning for removing the items.

10.

## **Citizen Participation**

Several residents got up to speak and share their views. I did not note down all of the individuals who spoke, and so the list below is likely incomplete. The full list can be obtained once the meeting minutes and YouTube video are posted.

Speakers included:

- Trisché Duckworth
- Mrs. Muhammad
- Irma Golden
- Bernice Lindke
- Rhonda MaGill
- Rickey Harding
- Gail Summerhill
- Brenda Baker (C2PST)
- Juan Bradford (Easter Egg Hunt)

Most participants were speaking against the removal of Trustee Greene's agenda items, including that they felt the decision constituted censorship and was rooted in racism and discrimination. Mrs. Muhammad commented on what she deemed to be poor financial oversight and inconsistencies with the balance sheet.

## **Supervisor Comments**

Supervisor Dabish-Yahkind responded to many of the comments shared during Citizen Participation. She clarified what information she received prior to making the decision to remove Trustee Greene's agenda items and that the Township bylaws give her authority to remove agenda items. She then moved on to the items in her Supervisor's Report, which included:

### **CDBG Strategy**

- Focus on enhancing housing, infrastructure, and economic development.
- Expected allocation of ~\$33,000 for a paving project at Fireman's Park.

### **Personnel Manual Updates**

- Significant updates in collaboration with Trustee Sarah Devereaux.
- Reflects labor law changes and enhances workplace policies.
- Awaiting legal review.

### **Roads Plan**

- Working with Washtenaw County Roads Commission on a five-year plan.
- Moving away from reactive work to a more strategic funding approach.
- Goal: More impactful infrastructure improvements.

### **Sewer Ordinance**

- Updated ordinance, coordinated with Ypsilanti Community Utility Authority.
- Enhances environmental protection and public health.
- Largely mandated by state law, on the March agenda.

### **Road and Blight Committee Implementation**

- Establishing a Roads and Blight Committee.
- Focus on infrastructure, property maintenance, beautification, and blight removal.
- Goal: Improve community appearance and residents' quality of life.

### **DTE Granada Substation**

- Discussions with DTE leadership regarding resident concerns.
- Expansion of the Granada Substation (~4 acres, under 15 ft tall).
- Would include a 70-ft lightning rod.

### **Salem Development**

- Alternate sewer route proposed for Salem Township's development.
- Route does not affect Superior Township but will be reviewed for zoning and utility impacts.

### **Other Items**

- Basement of Old Town Hall flooded. Remediation and insurance claim underway.
- Emergency Notification System for Washtenaw County activated after matter was discovered in Mario Lake. Investigation underway; officials believe matter to be organic (not sewage).
- Sycamore Meadows parking lot flooded after a service line failed. HUD got a contractor to the site.

## **Presentations**

### Fire Department – Chief Victor Chevrette

- Fire Chief Victor Chevrette gave a presentation outlining the services, staff, buildings and equipment of the Superior Township Fire Department.
- He shared ages and cost of equipment, and issues with both of the fire department's current stations.
- The Chief noted that the fire station on Ford Rd. is in desperate need of a new roof, and the station on MacArthur Blvd, which was built in 1970, needs to be rebuilt entirely.
- Chief Chevrette stressed the importance of maintaining equipment, especially given the cost of new equipment has drastically increased over the past few years.

### Informal Inquiry of the Billing Specialist & Resident Liaison, Controller Positions – Trustee Dana Greene Jr.

- Trustee Greene went over a high-level summary of his findings from his informal inquiry into the Billing Specialist & Resident Liaison and Controller positions.
- Trustee Greene shared that he was deeply concerned about what he found as a result of his inquiry, particularly an email from the former Supervisor to the current Supervisor regarding a text message sent from Rickey Harding in Utilities to the current Supervisor before she was elected.
- He made a point to stress that Trustee McKinney and Treasurer Lewis, who were both referenced in the email, may not have had knowledge that the email was ever sent.
- At one point, Trustee Greene asked that Trustee Schwartz resign from the Board.
- There was not a substantive discussion of the items contained in the presentation at this point.

## Consent Agenda

Board meeting minutes for January and February were approved after some discussion to ensure an item raised by Trustee McKinney was properly documented.

Trustee McKinney requested that the Utilities Department report be pulled out. Trustee Greene requested that the email from Landis Smith to the Board under Communications be pulled out.

The remainder of the consent agenda was accepted and filed.

## Revisited

Fred Lucas came to the podium to speak about some edits he made to the deed restriction for Garrett's Space. He shared that these revisions were done to ensure that the agreement is clear and serves the interests of both the Township and Garrett's Space. Mr. Lucas indicated that the Garrett Space attorney had reviewed and signed off on the changes.

Scott Halpert, co-founder of Garrett's Space, then asked if the Garrett's Space team still needed to pursue the conservation easement given the deed restriction would be in place soon. Mr. Lucas advised the Board not to comment definitively on the matter quite yet, after which Supervisor Dabish-Yahkind shared her viewpoint that she believed the deed restriction should be enough, but that the Township would confirm.

Trustee Devereaux then thanked the team at Garrett's Space, and Scott and Julie Halpert, for hosting her on the property on March 14, and expressed her admiration and support for the project.

## New Business

- Resolution 2025-14, Resolution to Approve Nomination to the Zoning Board of Appeals
  - No discussion
  - **Resolution passed unanimously**
- Resolution 2025-15, Resolution to Approve Reappointments to the Dixboro Design Review Committee
  - No discussion
  - **Resolution passed unanimously**
- Resolution 2025-16, Resolution to Approve the Utilities Department Material Standards Update Proposal with OHM
  - Discussion: Trustee McKinney
    - Requested an update on an issue with a line up on Ridge Rd.
    - Mary Burton, Utilities Director, responded that work was underway and she was awaiting an update.
  - **Resolution passed unanimously**
- Resolution 2025-17, Resolution to Approve the Professional Services Agreement for Fire Station NO. 1 Roof Replacement
  - Discussion: Trustee Devereaux



Director, noting that Townships closer to our size typically have HR Generalists or Managers.

- Trustee Greene accepted the friendly amendment.
- **Resolution passed unanimously**
- Resolution 2025-22, Termination of Employment Activities from former Controller Keith Lockie
  - Discussion: Whole Board
    - The Board discussed this item at length, with significant differences in opinion on whether or not to terminate Mr. Lockie's position, and by what date.
    - Trustee Greene stressed that Mr. Lockie has resigned five times over the years and at some point we need to insist on accountability.
    - Trustee McKinney expressed her concern that the Utilities Department would be left in a tough position if Mr. Lockie was immediately dismissed.
    - Trustee Devereaux offered a friendly amendment with a final termination date of June 31, 2025 and a progressive reduction in responsibilities and pay to be determined by the Utilities Director and the Township Supervisor in partnership.
    - Trustee Greene thanked Trustee Devereaux for the friendly amendment, but rejected it and asked for the vote.
  - **Resolution failed** (vote split 3-4)
    - Dabish-Yahkind: No
    - Devereaux: Yes
    - Greene: Yes
    - Lewis: No
    - McKinney: No
    - Robinson: Yes
    - Schwartz: No
- Resolution 2025-23, Rehiring Landis Smith to the position of Billing Specialist & Residential Liaison
  - Discussion: Treasurer Lewis, Trustee Devereaux (and others)
    - Treasurer Lewis asked what the implications were if we approved the resolution on other hiring and staffing decisions.
    - Trustee Greene pointed out that Mr. Lucas, Township attorney, had said that the Board could make an exception to the resolution if they chose to.
    - Trustee McKinney shared that if that was the case, then the hiring moratorium was meaningless.
    - Trustee Devereaux expressed her opinion as an HR professional that the role in question was a new role and not a vacancy due to the size of the compensation increase and the fact that the additional responsibility listed could indicate a significant expansion in leadership responsibilities.
    - Supervisor Dabish-Yahkind suggested that we take the vote.
  - **Resolution failed** (vote split 3-4)
    - Dabish-Yahkind: No
    - Devereaux: No
    - Greene: Yes

- Lewis: Yes
- McKinney: No
- Robinson: Yes
- Schwartz: No

### **Discussion**

There was only one item under Discussion: Road and Blight Committee. Supervisor Dabish-Yahkind shared that her intention was to convene an informal committee to help combat blight, improve roads, and ensure Superior Township is a beautiful place to live for all residents.

The Supervisor shared that she had three people already selected and willing to serve if the Board was interested in voting on the item tonight.

Trustee Devereaux shared that she was not comfortable voting given the new hiring process that's under development requires all positions, including Committees, to be posted and go through a formal interview process. Devereaux suggested that we table the vote until the April meeting.

### **Bills For Payment**

- No discussion
- Accepted and filed

### **Pleas and Petitions**

Several participants made pleas and petitions, mostly in response to the removal of agenda items submitted by Trustee Greene and subsequently how the Board members voted on the resolutions that were added back in. There were several personal attacks, particularly against Trustee McKinney, Supervisor Dabish-Yahkind, and Trustee Schwartz. A few speakers signaled that they would be back to continue to resist what they felt was poor behavior on the part of the Board.

The meeting was adjourned just before 10:30pm.

MOONWINKS & SUPERIOR TOWNSHIP PRESENTS

# DIXBORO SUMMER DAYS FESTIVAL

~SERIES~

LIVE, LOCAL MUSIC, CRAFT VENDORS,  
SILENT AUCTION, RAFFLE, KIDS  
BOUNCE HOUSE & GAMES!

2025 DATES

SATURDAY, MAY 24

SATURDAY, JUNE 21

SATURDAY, JULY 19

SATURDAY, AUGUST 30

LAITH AL-SAAD, BILLY BRANDT & THE SUGAREES, CHARLIE MILLARD BAND,  
JIVE COLOSSUS, J. MICHAEL & THE HEAVY BURDEN, DANI DARLING,  
THE STASHES, JO SERRAPERRE TRIO, MICHELLE HELD, MIKE GENTRY,  
ERIC MOORE, JOHN FINAN, ROCHELLE CLARK & JASON DENNIE,  
KANDY FREDRICK, THE NITPICKERS, ROADSIDE SILHOUETTES,  
JOHN VAUGHN, SPIKE, LEAN TIMES

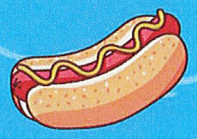
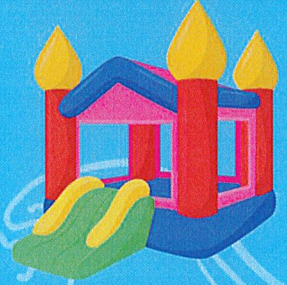
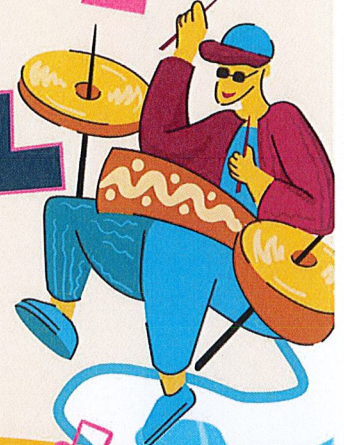
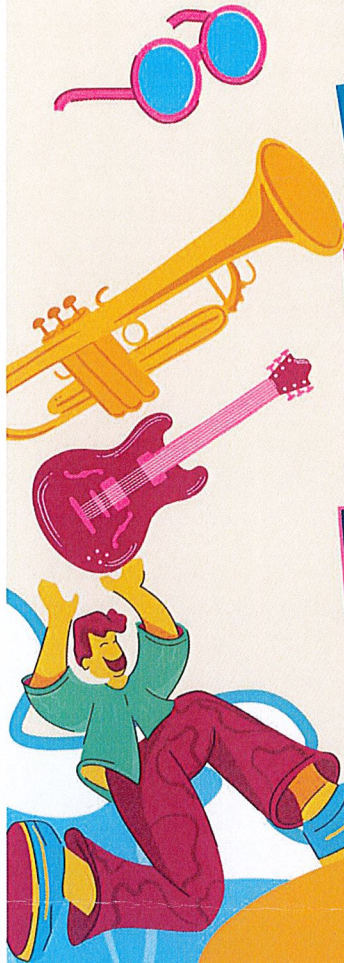
FULL MENU PLUS

BURGERS, HOT DOGS,  
SAUSAGES

5151 Plymouth Rd. Dixboro, Ann Arbor, MI 48105

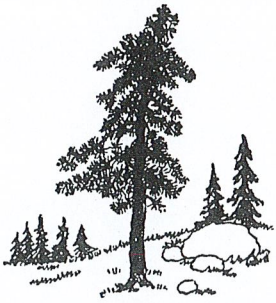
moonwinkscafea2.com 734-994-5151

EMAIL KEVIN@MOONWINKSA2.COM FOR  
SPONSORSHIP OPPORTUNITIES



8A





WASHTENAW COUNTY

# LANDOWNER'S RESOURCE LIST

SB.

## LAND ASSESSMENT

Huron River Watershed Council (HRWC)

[hrwc.org](http://hrwc.org)

HRWC offers natural lands field assessments of forests, wetlands, and prairies in the watershed. Assessments include:

- Plant lists of species identified on your property.
- Analysis of how ecologically intact or disturbed the natural areas on your property are.
- Information about the water quality benefits provided by natural lands.
- Data you can provide conservation programs if you are pursuing land protection options

[hrwc.org/what-we-do/programs/natural-area-assessments-and-protection](http://hrwc.org/what-we-do/programs/natural-area-assessments-and-protection)

## LAND MANAGEMENT

Washtenaw County Conservation District (WCCD)

[washtenawcd.org](http://washtenawcd.org)

Michigan Agriculture Environmental Assurance Program (MAEAP)

- Helps farms of all sizes and all commodities voluntarily prevent or minimize agricultural pollution risks.

[maeap.org](http://maeap.org)

U. S. Department of Agriculture Natural Resources Conservation Service (USDA NRCS)

- Environmental Quality Incentives Program (EQIP)
  - Provides technical, and possibly financial, assistance to address natural resource concerns and deliver environmental benefits (e.g. improved water and air quality, conserved ground and surface water, increased soil health and reduced soil erosion and sedimentation, improved or created wildlife habitat, and mitigation against drought and increasing weather volatility).

[nrcs.usda.gov/wps/portal/nrcs/main/national/programs/financial/eqip](http://nrcs.usda.gov/wps/portal/nrcs/main/national/programs/financial/eqip)

- Conservation Stewardship Program (CSP)

- Provides technical, and possibly financial, assistance to build on a landowner's existing conservation efforts.

[nrcs.usda.gov/wps/portal/nrcs/main/national/programs/financial/csp](http://nrcs.usda.gov/wps/portal/nrcs/main/national/programs/financial/csp)

MiFarmLink

- Aims to help shepherd prime farmland from its current stewards into the hands of the next generation by listing and linking land, assisting with succession planning, and connecting new farmers with mentors.

[mifarmlink.org](http://mifarmlink.org)

# LAND PROTECTION

## Washtenaw County Parks and Recreation Commission (WCPRC)

### Natural Areas Preservation Program (NAPP):

- For landowners wishing to sell their property, NAPP purchases unique natural areas to ensure preservation for the benefit of all County residents, plants, and animals. The WCPRC manages the program, identifying and caring for lands with special ecological, recreational, and educational benefits.
- In addition, NAPP works to preserve farmland through the purchase of conservation easements. In these instances, the property remains in private ownership.

The program aims to preserve lands which will:

- Protect the natural, ecological diversity & heritage of Washtenaw County
- Complement the existing network of publicly and privately protected lands
- Remain working farms, particularly those including prime and unique soils
- Preserve wildlife habitat or important natural habitats
- Maximize the public benefit

[washtenaw.org/2798/Apply-For-Preservation-of-Your-Land](http://washtenaw.org/2798/Apply-For-Preservation-of-Your-Land)

### Ann Arbor Greenbelt Program

- Works with private landowners to conserve their property through purchase of development rights.
- Competitive program with more applications than funding available. Timeline from application to closing is typically 24-36 months, and in some cases longer.
- Must be located within the Greenbelt district to be eligible. See map on our website.
- Greenbelt application available online.

[a2gov.org/greenbelt](http://a2gov.org/greenbelt)

### Legacy Land Conservancy

- Non-profit private land trust serving Washtenaw, Jackson, and Lenawee Counties.
- Place Conservation Easements on private property as well as holding and managing some rustic nature preserves.
- If interested in donating all or a portion of the Conservation Easement, that is our specialty!

[legacylandconservancy.org/](http://legacylandconservancy.org/)

### Southeast Michigan Land Conservancy (SMLC)

- A Non-profit qualified conservation organization serving all of southeast Michigan including Washtenaw County.
- SMLC protects & preserves local natural areas and farmland through purchases and donations of land and conservation easements and assisting conservation partners including local governments.
- They provide public education & activities including public access at its nature preserves.

[smlcland.org](http://smlcland.org)

### NOTES

---

---

---





# Southeast Michigan Land Conservancy

8383 Vreeland Rd.  
Superior Township, MI 48198  
734-484-6565  
smlcland.org



Photo by Charles Scott

## 2025 Fact Sheet

**Mission Statement:** The Southeast Michigan Land Conservancy conserves natural land and open space – including forests, wetlands, meadows, agricultural lands, and places of scenic beauty – to provide habitat for wildlife and to enrich the lives of people.

**Purpose:** To conserve and manage wildlife habitat in order to foster healthy ecosystems; protect air and water quality, and provide scenic enjoyment. To promote appreciation of the natural world; educate the public about conservation options; and engage communities throughout southeast Michigan in land protection and stewardship activities.

**History:** Southeast Michigan Land Conservancy (SMLC) was founded in 1988 to protect land in the 7-county southeast Michigan region: Livingston, Macomb, Monroe, Oakland, St. Clair, Washtenaw and Wayne counties. To date, SMLC has protected almost **3,500 acres** in 7 counties plus Genesee. The **Superior Township Chapter (STC)** was established to assist SMLC with land protection and community relations in Superior Township.

**Conservation Priorities:** Our conservation work is focused in 3 main priority areas: the **Superior Greenway** in Washtenaw County, a more than 3,500-acre greenbelt between Ann Arbor and metro Detroit; the **Sibley Prairie** complex in Wayne County, a globally rare remnant of lakeplain prairie habitat; and the **Lost Lake** region in northern Oakland County, a 500+ acre mosaic of lakes, wetlands, hardwood swamps, forest, and prairie.

**Administration:** SMLC is certified by the IRS as a 501(c)3 nonprofit organization and is a "qualified conservation organization" eligible to receive tax-deductible conservation easement and land donations. SMLC is nationally accredited by the Land Trust Accreditation Commission and is a registered charity with the State of Michigan. Finally, SMLC is governed by a volunteer board of directors that oversees the governance, fiscal and operational activities of the organization.

### 2025 Southeast Michigan Land Conservancy Board of Directors:

- James McIntyre, President
- Mary Ericson, Secretary
- Mitch Hall, Treasurer / Finance Committee Chair
- Donald DeMallie, At-large Officer
- Christopher Flanagan
- Richard Kent
- Fredric Lund
- William Secrest, STC Committee Co-Chair
- James T. Weiner, Land Protection Committee Chair

### SMLC's Board of Directors is assisted by **7 Committees:**

- ❖ Executive
- ❖ Finance
- ❖ Land Protection
- ❖ Stewardship
- ❖ Fund Development
- ❖ Superior Township Chapter
- ❖ Event Planning

(OVER)

## 2025 Southeast Michigan Land Conservancy Fact Sheet continued

**Programs:** SMLC's main programs are **Land Protection** which includes: *Conservation Initiatives, Land Acquisition, Land and Easement Stewardship, and Public Access; Community Outreach, and Regional Initiatives.* Our land conservation, community engagement and conservation awareness-building is accomplished primarily through these efforts.

SMLC is based at a historic farm in Superior Township. The Conservancy Farm may have one of the oldest residential buildings in the county, the original homestead cabin dating from the 1830's. It is also home to SMLC's **Community Organic Garden** program.

Finally, SMLC accomplishes some of our program goals by partnering with related organizations such as the **Land Trust Alliance**, a national association serving nearly 1,000 land trusts across the country. SMLC also works with other area community, environmental and governmental groups including **SEMIWILD**.

**Operations:** SMLC maintains a small office of 2 full-time and 1 part-time staff. We also have a strong group of volunteers. Check out our volunteer opportunities and view our event calendar at **smlcland.org** and follow us on social media.

**Donations:** Donors can give to **SMLC** and we can apply their gift where it is needed most, or they can direct their gift to one or more of the following SMLC restricted funds: **Land Protection, Stewardship, Superior Township, and Stewardship Endowment.** SMLC also raises funds for specific land protection projects (as announced). Please visit our website to give online or download a donation form. SMLC is also on Paypal: [paypal.com/us/fundraiser/charity/1829295](https://paypal.com/us/fundraiser/charity/1829295). Please call our office if you need assistance or to discuss other ways to give, including land conservation options, with our knowledgeable staff.

**Nature Preserves:** SMLC nature preserves are beautiful places to hike and explore the natural world in southeast Michigan. Preserves are open daily from dawn to dusk (see website for seasonal closure announcements).

### Superior Greenway (Washtenaw):



- Conservancy Farm
- Jack R. Smiley Nature Preserve
- LeFurge Woods Nature Preserve
- Secrest Nature Preserve
- Springhill Nature Preserve
- Allen Woods Nature Preserve (Wayne)
- Bell Creek Nature Preserve (Wayne)
- Chesterfield Nature Preserve (Macomb)
- Goemaere-Anderson Wetland Preserve (Oakland)
- Heritage Oaks Nature Preserve (Wayne)
- Lost Lake Nature Preserve (Genesee/Oakland)
- Lyon's Point Nature Preserve (Livingston)
- Morris-Reichert Nature Preserve (Livingston)
- Nichwaugh Lake Nature Preserve (Livingston)
- Pittsfield Stream Corridor (Washtenaw)
- Warren H. Carpenter Nature Preserve (Livingston)

### Sibley Prairie Nature Preserve (Wayne)

- Sibley Prairie site
- West Prairie site



## Southeast Michigan Land Conservancy

8383 Vreeland Rd., Superior Township, MI 48198

734-484-6565 • [smlcland.org](http://smlcland.org)





## Southeast Michigan Land Conservancy

### Forest to Mi Faucet Fact Sheet



**SMLC's Mission Statement:** The Southeast Michigan Land Conservancy conserves natural land and open space – including forests, wetlands, meadows, agricultural lands, and places of scenic beauty – to provide habitat for wildlife and to enrich the lives of people.

**SMLC's Purpose:** To conserve and manage wildlife habitat in order to foster healthy ecosystems, protect air and water quality, and provide scenic enjoyment. To promote appreciation of the natural world; educate the public about conservation options; and engage communities throughout southeast Michigan in land protection and stewardship activities.



Ariel of Lost Lake Nature Preserve  
Photo by Wendy Pellerito

**Forest to Mi Faucet Initiative:** Southeast Michigan Land Conservancy is one of 20 grant recipients of the Forest to Mi Faucet Initiative administered by the Michigan Department of Natural Resources Forest Stewardship Program and funded by the USDA Forest Service/ National Fish and Wildlife Foundation.

#### SMLC's grant work will:

- empower landowners in seven counties to better manage/protect their woodlands,
- contribute our share of the DNR's goal to plant 60,000 trees in forest riparian zones,
- educate the public about the connections between forests and drinking water quality.



# Forest to Mi Faucet Initiative

Forests cover 56% of Michigan's land so more than half our water flows through 20 million acres of forest on its way to rivers, lakes and the Great Lakes. Better than any other land use, forests provide clean water and protect the sources of our drinking water. If the drinking water in your tap comes from a well, river or Great Lake, a forest helped keep it clean before it was treated and delivered to your home.

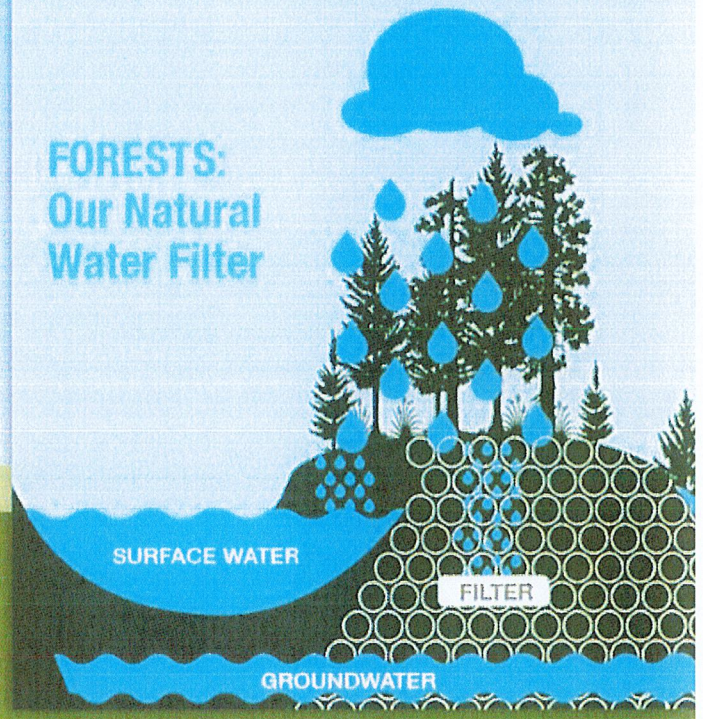
The Forest Stewardship Program at the Michigan Department of Natural Resources is leading a team of twenty conservation partners in Michigan including SMLC on a project called "Forest to Mi Faucet" to educate woodland landowners and the public about the connections between forests and drinking water. The project builds on the USDA Forest Service's national Forests to Faucets 2.0 spatial analysis of priority watersheds for protecting surface drinking water in the United States.

## Forest to Mi Faucet has six main components:

- 1. Help municipal water utilities implement their source water protection plans.**
- 2. Protect forests in important watersheds through conservation easements, nature preserves, etc.**
- 3. Manage forests better with forest certification and Master Loggers using best management practices.**
- 4. Expand forests by planting trees in strategic urban and rural riparian zones to reduce pollution runoff.**
- 5. Ecological restoration of forests for water quality with prescribed fire and reducing invasive species.**
- 6. Educate landowners and the public about connections between forests and their drinking water.**

Forests act as a natural filter, resulting in high-quality source water that requires minimal treatment.

**FORESTS:  
Our Natural  
Water Filter**



Graphic: Oregon Forest Resources Institute

Learn more at [smlcland.org](http://smlcland.org) or  
[Michigan.gov/ForestToMiFaucet](http://Michigan.gov/ForestToMiFaucet)

**Southeast Michigan Land Conservancy**

8383 Vreeland Rd., Superior Township, MI 48198

734-484-6565 • [smlcland.org](http://smlcland.org)

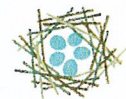


Forest to Mi Faucet is a Michigan Department of Natural Resources program supported by the USDA Forest Service and National Fish and Wildlife Foundation. All partners are equal opportunity providers.

80.

# PROTECT YOUR LAND

*Why, what, and how?*



**LEGACY**  
Land Conservancy

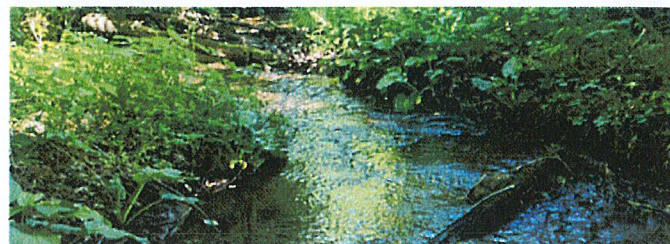
*Protecting and Preserving  
Southern Michigan*

## Why protect your land?

Hundreds of people have worked with us to protect their land, and each time the reason why was different.

You might recognize some of these common motivations!

- Protect what you love for future generations
- Preserve what makes southern Michigan a great place to live: beautiful scenery, clean air and water, rural heritage, and places to enjoy the outdoors
- Promote a healthy environment, including cleaner air, cleaner water, and healthier soil
- Preserve access to productive farmland and local food
- Invest in your family; protecting land can provide some financial benefits through a variety of tax benefits



## What kind of land does Legacy protect?

Legacy conserves many different types of land, and prioritizes the following:

- **Water quality protection:** Is there a significant hydrological feature on the property such as a river, stream, wetland, or shoreline? Does the property provide function critical to water flow and water quality?
- **Farmland preservation:** Is the property a working farm? Does it contain mostly prime soils or soils of local importance?
- **Critical habitat or natural ecosystem:** Does the property contain high quality habitat? Are plant or animal species present which are indicative of a highly functional ecosystem? Could the property be restored to provide such habitat?
- **Adjacency:** Is the property next to other protected lands, whether by Legacy, or other public and/or non-profit organizations? Will it facilitate a connective corridor for wildlife movement and resiliency in response to climate change?
- **Rural character and scenic vistas:** Does the property's preservation help maintain local rural character? Does it provide a scenic vista from a public road, water-way or trail?
- **Open spaces:** freedom from closeness.
- **Recreational opportunities**



We always knew our land was special, and protecting it has always been important to our family. It has been a long journey since we started working with Legacy six years ago, but today, we find great comfort in knowing that our land, especially the rare fen, and the plants and animals that call it home will be protected forever.

**MIKE AND DIANA ARNOLD**

# PROTECT YOUR LAND

## *Why, what, and how?*



LEGACY  
Land Conservancy

*Protecting and Preserving  
Southern Michigan*

### How can you protect your land?

There are two main ways to partner with Legacy to permanently conserve your property.

- **Create a conservation easement**

One way is to create a conservation easement with Legacy. With this option, the property remains in private ownership and is not open to the public, but it is conserved by through a legal document. This document is attached to the deed of the property, and runs with the property in perpetuity.

- **Create a public nature preserve**

Another way is to give your land to Legacy to create a nature preserve that is owned and managed by Legacy, and open to the public.

There are other ways to conserve your property; such as donating a conservation easement by bequest and donating a property with a reserved life estate--the list is long!

We encourage you to consult your own legal and financial advisors about options the best fit your specific scenario.

In some instances Legacy purchases land or conservation easements through grants or private donations.

**Whatever your situation, Legacy is ready to help explore the right solution for you!**

---

\*Disclaimer\* Legacy Land Conservancy does not provide tax, legal, or financial advice. Any document or information on this page or shared by our staff is intended to be educational only, and does not constitute legal or tax advice. Legacy Land Conservancy strongly encourages all of our donors to seek counsel from their own legal and financial advisors. Any information or documents shared by Legacy Land Conservancy cannot be used to avoid tax-related penalties.

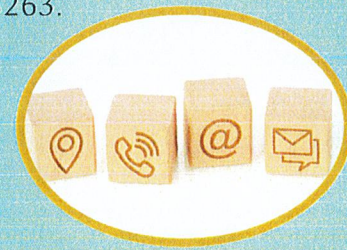


### Ready to get started?

If you are interested in protecting your land, we're ready to help you take the first step!

### *Contact Us!*

To start a conversation with us about your land, contact our Land Protection Specialist at 734-302-5263.



Legacy Land Conservancy  
6276 Jackson Rd Ste G  
Ann Arbor, MI 48103  
[legacylandconservancy.org](http://legacylandconservancy.org)

# CONSERVATION EASEMENT FAQ



LEGACY  
Land Conservancy

*Protecting and Preserving  
Southern Michigan*

## What is a conservation easement?

A conservation easement (CE) is a legal document that identifies the natural features of a property that we value, known as the conservation values, and restricts activities and uses on the property that may harm or interfere with the conservation values. It sets a new standard for how a property can be used and takes into consideration the property's unique set of conservation values.

## What are conservation values?

Conservation values are the aspects of a property that provide ecological and/or public benefit, including ecosystem services, agricultural value, open space, and more!

- Ecosystem services can include groundwater recharge, filtration, wildlife habitat, and climate change mitigation.
- Agricultural value can include productive soils and rural economic viability.
- Open space can refer to viewsheds, relief from urban closeness, and scenic panoramas.

## Who decides the restrictions?

The land trust and landowner work together to define the restricted uses and activities, or "terms", of the CE. Through a collaborative process, we craft the language that specifies what can and cannot be done on the property. Ultimately, the result is a personalized CE for the landowner and the land that allows comfortable property use while also protecting identified conservation values.



## How does a CE interact with property rights?

Everyone who owns land possesses a variety of rights associated with that land. These land rights can include specific rights such as surface rights, mineral rights, water rights, and development rights. CEs interact with many of the property rights a landowner possesses, including development rights, mineral rights, and water rights.

## What happens to the landowner's restricted rights?

When a landowner enters into a CE, they voluntarily limit development and other property rights related to their land. Neither the landowner, nor any other person or organization, can use those rights in the future. The CE restrictions apply to the current landowner and all future landowners.

# CONSERVATION EASEMENT

## FAQ



LEGACY  
Land Conservancy

Protecting and Preserving  
Southern Michigan

### Can a CE provide financial benefit?

Yes it can! A landowner can either choose to be compensated financially for their CE value, or donate that value. There are federal tax benefits associated with donating CE value. Legacy can talk with landowners about how these tax benefits work, but we recommend that landowners consult with their tax, legal, and financial professionals.\*

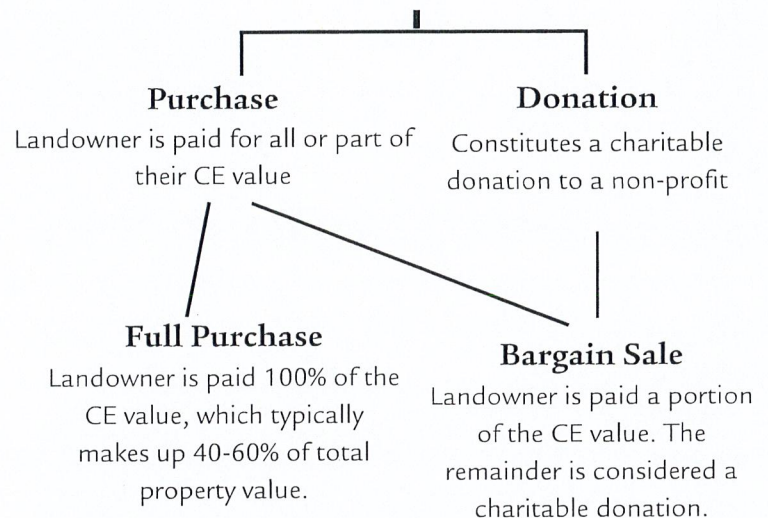
### How is a conservation easement valued?

If a landowner chooses to be paid for their CE, an appraisal is completed to determine the fair market value (FMV) of the CE. The landowner can choose to be paid all or a portion of the CE's FMV. The CE's FMV is determined by calculating the value of the property now, without the CE in place, then the value of the property with the CE in place. The former is subtracted from the latter, to produce the value of the CE. CE value tends to make up 40-60% of a property's total value.

### What other costs are associated with a CE?

Executing this permanent legal document requires due diligence. Legacy must commission a survey, title search, and environmental assessment. We must resolve title issues and place funds aside for perpetual monitoring and legal enforcement. While we encourage landowner participation toward these expenses, it is not required. Legacy works with landowners to ensure the process is accessible to a wide range of landowners.

### Conservation Easement Value



### How long does it take?

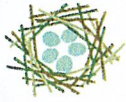
Donation of a conservation easement typically takes 1-3 years. Purchase of a conservation easement can take 3-5 years due to the larger fundraising requirements. Whether an easement is donated or purchased, unforeseen title and environmental issues arise and can delay the process. This gives landowners plenty of time to consider the terms of the conservation easement before it is recorded.

## Contact Us!

To start a conversation with us about your land, contact our Land Protection Specialist at 734-302-5263.

Legacy Land Conservancy  
6276 Jackson Rd Ste G  
Ann Arbor, MI 48103  
[legacylandconservancy.org](http://legacylandconservancy.org)

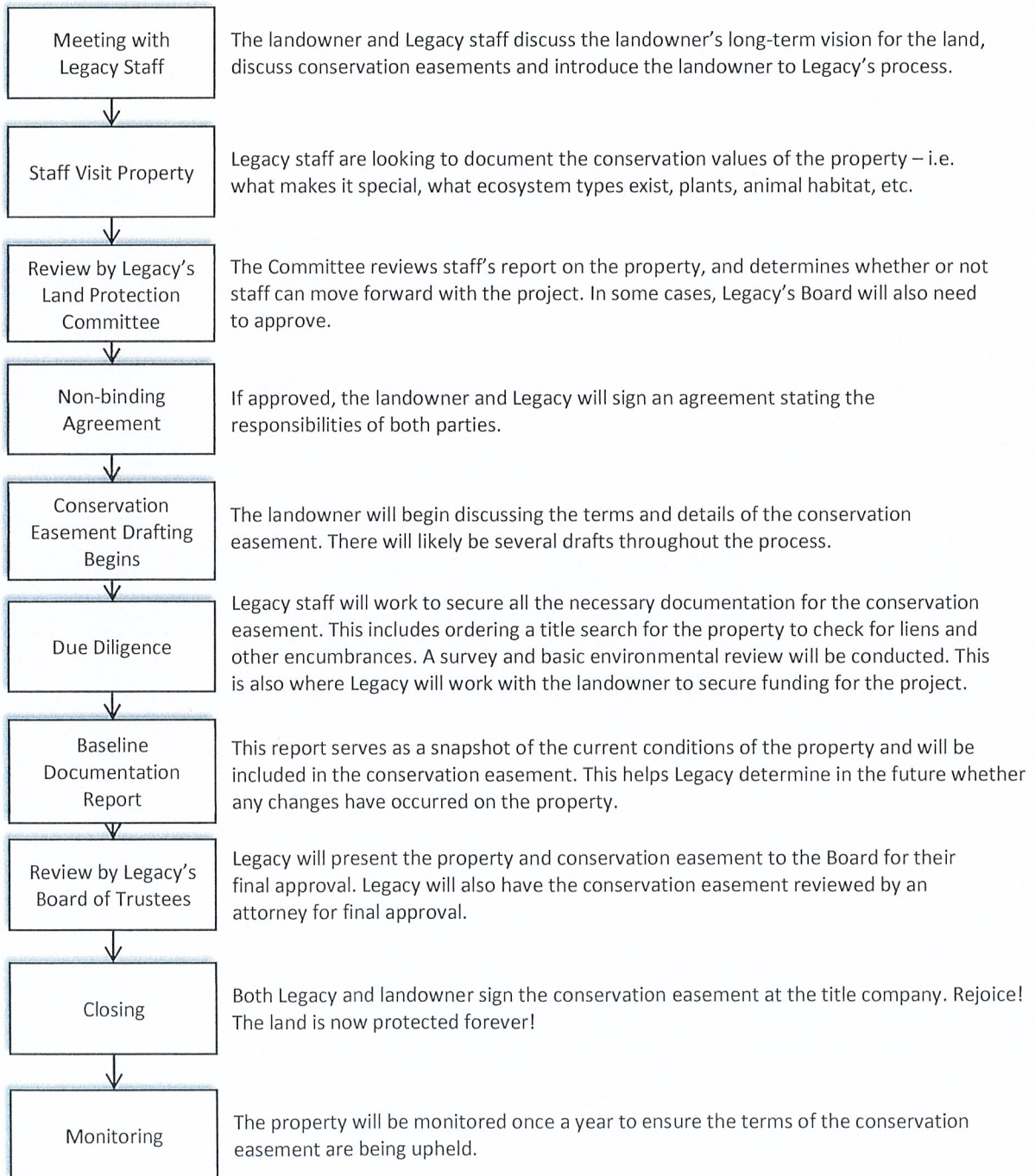
\*Disclaimer: Legacy Land Conservancy does not provide tax, legal, or financial advice. Any document or information on this page or shared by our staff is intended to be educational only, and does not constitute legal or tax advice. Legacy Land Conservancy strongly encourages all of our donors to seek counsel from their own legal and financial advisors. Any information or documents shared by Legacy Land Conservancy cannot be used to avoid tax-related penalties.



# LEGACY Land Conservancy

Protecting and Preserving  
Southern Michigan

## The Land Protection Process





PARKS &  
RECREATION

9A

## **MEMORIAL TREE AND BENCH PROGRAM**

*Create a Living Memorial through the Superior Township Parks and Recreation Memorial Tree and Bench Program.*

### **PURPOSE**

Superior Township Parks & Recreation offers a unique opportunity for you to honor or memorialize a special person **or event** in your life by donating in their name. Pay tribute to a lost loved one by memorializing them through the gift of a tree or bench in their honor. By purchasing a memorial bench or tree, an individual is not only creating a lasting memorial, they are also taking an active role in preserving and protecting Superior Township's Park System.

### **The Superior Township's Park System includes:**

- Cherry Hill Nature Preserve:** 6255 Cherry Hill Road
- Community Park:** 1425 Stamford Road
- Dixboro Village Green:** 5221 Short Street
- Firemans Park:** 8795 MacArthur Boulevard
- Harvest Moon Park:** 1596 Harvest Lane
- Norfolk Park:** 1815 Norfolk Avenue
- North Prospect Park:** 3777 North Prospect Road
- Oakbrook Park:** 8460 Berkshire Drive
- Schroeter Nature Preserve:** 8740 Warren Road

*\*Some parks may not be able to add additional benches or trees.*

### **How does the process work?**

•Step 1: Contact the Parks and Recreation Department at (734) 480-5502 to discuss which park and in what program you would like to contribute a tree or a bench.

•Step 2: The next step is to walk the requested park with a Parks and Recreation staff member to determine the preferred location for your tree or bench. You may find an area of an old bench or deteriorating tree you would like to replace, or you may find an open space that would be perfect for a new bench or tree. Once you determine the preferred location, the Parks and Recreation Department will bring your full request, including the words you would like on the plaque, to the Superior Township Parks & Recreation Commission for approval.

- Step 3: Once the location for your new tree or bench has been approved, you will need to make the payment in full. When the payment is processed, the wording will be sent to the plaque manufacturer, and your new tree or bench will be ordered. The plaque manufacturer will create a digital mockup of your plaque and will be sent to you for approval or edits via email. If approved, simply sign the proof, and return it as instructed for the order to be completed. If edits are needed, it will be sent back to the plaque manufacturer with your edits and repeated until the plaque wording is approved by you, the Parks and Recreation Department.

### **How do I get additional information or start the process?**

- To begin the process of participating in the Memorial Tree and Bench Program, or to receive additional information, please contact the Parks & Recreation Department at;  
Email: [superiorparks@superior-twp.org](mailto:superiorparks@superior-twp.org)  
Phone: (734) 480-5502

### **How should I make my payment?**

- You can pay by Cash, Credit Card, or Check. Checks can be made out to Superior Township Parks and Recreation Department and mailed to:

Superior Township Parks and Recreation Department  
Memorial Tree and Bench Program  
575 E. Clark Rd.  
Superior Township, Michigan 48198

# **MEMORIAL TREE PROGRAM**

## **Why support the Memorial Tree Program?**

- By planting a tree, you are creating a living memory that will last for generations, while caring for the environment. Trees are a lasting tribute that provide clean air, ease noise pollution, create habitats for wildlife, and control erosion. You also have the option of purchasing a plaque to be placed before an existing tree.

## **How much does the Memorial Tree Program cost?**

- A new Memorial tree will cost \$850.

The cost includes the tree, installation, and care. The tree will be guaranteed for a period of five years. If a tree dies during this period, it will be replaced at no charge. After five years, any replacement tree to be funded by the original purchaser. Replacement cost will be determined by cost at time of replacement.

- A memorial tree plaque will cost \$650.

If you would like a plaque to accompany the new tree, or purchase a plaque for an existing tree, the cost includes a bronze plaque designed by the purchaser and installation of the plaque onto a concrete block placed in the ground in front of the tree.

- *Prices could change due to market pricing.*

## **Can I choose the inscription on the plaque?**

- Yes. The plaque will be 7" x 5" and will generally have 4 lines of text with 26 characters maximum per line (including spaces).

## **What tree would be installed in the Memorial Tree Program?**

- Tree species will be determined on a case-by-case basis. Determining factors will include type of tree desired, location, and soil conditions.

## **Where will my tree be planted?**

- Trees may be planted in any park, with the approval of the Parks and Recreation Director and the Superior Township Parks & Recreation Commission.

## **What if my tree needs to be removed?**

- While never expected, a memorial tree may need to be removed or moved due to construction or other unforeseen circumstances. The Township will consider moving smaller trees but may not be able to do so in all cases. When contact information is available, the Parks & Recreation Director will contact the donor to discuss options and provide notification. The Township does not guarantee that after five years a memorial tree can be moved or will be replaced.

## **Can I make a dedication for other occasions besides memorials?**

- At this time, we are only excepting memorials for lost loved ones. Please contact the Parks & Recreation Department for additional information.

# MEMORIAL BENCH PROGRAM

## Why support the Memorial Bench Program?

- By donating a bench, you can honor your loved one while enhancing the aesthetics of the Superior Township Park System. Contributing a bench will improve a park by offering a resting place for leisure and relaxation.

## Can I make a dedication for other occasions besides memorials?

- At this time, we are only accepting memorials for lost loved ones. Please contact the Parks & Recreation Department for additional information.

## How much does the Memorial Bench Program cost?

- A new commemorative bench will cost \$2,500.00.

The cost includes the bench, a bronze plaque designed by the purchaser, installation, and **perpetual** care.

- *Price could change due to market pricing.*

## Can I choose the inscription on the plaque?

- Yes. One plaque may be placed on each bench. Maximum size of a plaque is 10" x 3". Each sign will generally accommodate 4 lines of text with 26 characters maximum per line (including spaces).

## What if my bench becomes destroyed?

- The Township will replace any destroyed benches due to vandals, accidents, or unforeseen circumstances for a period of twenty years. After normal wear and tear over two decades, benches may need to be replaced. When contact information is available, the Township will attempt to contact the donor to discuss options for a replacement at the purchaser's cost.

## What would the bench and plaque look like?



Memorial Bench at Cherry Hill Nature Preserve



PARKS &  
RECREATION

## MEMORIAL TREE AND BENCH PROGRAM

Purchaser's Name: \_\_\_\_\_

Home Phone: \_\_\_\_\_ Cell Phone: \_\_\_\_\_

Email: \_\_\_\_\_

Home Address: \_\_\_\_\_

City & State: \_\_\_\_\_ Zip: \_\_\_\_\_

Bench & Plaque: \$2,500.00

Tree & Plaque: \$1,500.00

Tree Only: \$850.00

*Please Circle One*

### Wording for Plaque

Four lines maximum, with a maximum of 26 characters per line including spaces.

\_\_\_\_\_  
\_\_\_\_\_  
\_\_\_\_\_  
\_\_\_\_\_

The location of the tree or bench must be marked on a map and attached to this application.

The full payment must be made in advance of any order to be made by Superior Township Parks & Recreation Department. The paid fee is non-refundable once the order for materials has been placed.

I, the undersigned authorize Superior Township Parks & Recreation to place the order for a Memorial Tree or Bench, and agree to pay the fee listed below in full prior to order.

Park Agreed Upon: \_\_\_\_\_ Tree Species Agreed Upon: \_\_\_\_\_

Signature of Purchaser: \_\_\_\_\_ Date: \_\_\_\_\_

Superior Township Staff: \_\_\_\_\_ Date: \_\_\_\_\_

-----  
FOR STAFF TO COMPLETE:

Amount Received: \_\_\_\_\_ Payment Type: \_\_\_\_\_ Initials: \_\_\_\_\_

# RECOMMENDED TREE LIST

Each species' preferred growing conditions and natural characteristics are provided. A tree species should be chosen that is suitable for site conditions, to give the tree the best chance of thriving. You are welcome to propose planting a species that is not present on this list for evaluation.

Common Name	Scientific Name	Native to MI	Soil	Height	Bloom Color	Comments
Birch, River	<i>Betula nigra</i>	No	L C	40-70'	Y-G	Native to southern USA and east coast. Unique bark.
Birch, Yellow	<i>Betula alleghaniensis</i>	Yes	S L C	45-75'	Pr-Y	Vibrant yellow in fall.
Blackgum	<i>Nyssa sylvatica</i>	Yes	L	30-45'	G-W	Vibrant red in fall. Slow growing.
Cedar, Northern White	<i>Thuja occidentalis</i>	Yes	L	20-40'	None	Evergreen. Fragrant foliage.
Dogwood, Flowering	<i>Cornus florida</i>	Yes	S L C	15-30'	W	Shade tolerant. Beautiful spring flowers. Red or purple fall foliage.
Ginkgo (male)	<i>Ginkgo biloba</i>	No	S L	50-80'	Y-G	Native to China. Unique leaf shape.
Hackberry	<i>Celtis occidentalis</i>	Yes	S L	40-60'	Y-G	Small, edible fruit. Good wildlife food.
Linden, American	<i>Tilia americana</i>	Yes	L	50-80'	Y	Shade tolerant. Fragrant flowers.
Maple, Red	<i>Acer rubrum</i>	Yes	S L C	75-100'	R	Shade tolerant. Vibrant red in fall.
Maple, Sugar	<i>Acer saccharum</i>	Yes	S L	50-80'	Y-G	Shade tolerant. Vibrant orange in fall.
Musclewood (American hornbeam)	<i>Carpinus caroliniana</i>	Yes	L	10-30'	R-G	Prefers full to part shade. Unique bark.
Oak, Black	<i>Quercus velutina</i>	Yes	L	55-70'	Y-G	Slow growing and long-lived.
Oak, Bur	<i>Quercus macrocarpa</i>	Yes	S L C	55-75'	Y-G	Slow growing and long-lived.
Oak, Chinquapin	<i>Quercus muehlenbergii</i>	Yes	S L	40-60'	Y-G	Slow growing and long-lived.
Oak, Northern Red	<i>Quercus rubra</i>	Yes	S L	50-75'	Y	Vibrant red and orange in fall.
Oak, Swamp White	<i>Quercus bicolor</i>	Yes	L C	45-60'	Y-G	Slow growing.
Pine, Eastern White	<i>Pinus strobus</i>	Yes	L	50-80'	None	Evergreen. Fine feathery needles.
Redbud	<i>Cercis canadensis</i>	Yes	S L C	10-25'	Pr	Vibrant spring flowers..
Sycamore	<i>Platanus occidentalis</i>	Yes	S L C	75-100'	Y-G	Unique, mottled bark pattern/colors.
Tulip Tree	<i>Liriodendron tulipifera</i>	Yes	S L	45-90'	Y-G	Beautiful flowers. Unique leaf shape.

All species are appropriate for partial to full sun, unless otherwise noted.

Soil tolerance: S-sand, L-loam, C-clay (Loam is soil with roughly equal proportions of sand, silt, and clay)

Height: at mature age, different growth rates for each species

Bloom Color: Br-brown, G-green, P-pink, Pr-purple, R-red, S-silver, W-white, Y-yellow

## RECOMMENDED TREE LIST (CONT.)

**Blackgum (*Nyssa sylvatica*)** A small-to-medium tree that grows in a pyramidal shape. Prefers wet or moist soils but can tolerate drier conditions. Not suitable for sites that might experience harsh winds (such as a hill with no windbreak). It has shiny, dark green leaves in summer and turns to orange or red in fall. Small and insignificant flowers. Fruits attract birds and other wildlife.

**River birch (*Betula nigra*)** A fast growing, medium-sized tree. Can grow as a single trunk with a pyramidal shape or multi-trunked with a more irregular shape. Tolerates drier soils but prefers moist conditions, including semi-aquatic. Has unique pinkish-brown and flaky bark, with diamond-shaped leaves. Flowers are small and insignificant. Native to southern US and the east coast.

**Yellow birch (*Betula alleghaniensis*)** A large canopy tree generally found in wet or moist soils but can tolerate drier conditions. It has dull, dark green leaves that turn vibrant yellow in the fall. It has unique, peeling bark. Long lived. Small and insignificant flowers.

**Northern white cedar (*Thuja occidentalis*)** Also known as American arborvitae. A small to-medium evergreen tree that grows in a dense, conical or narrow shape. Prefers moist, well-drained soils and is intolerant of drought. Best in full sun with limited shade. Evergreen foliage is fragrant and is retained over winter. Provides food for wildlife in winter.

**Flowering dogwood (*Cornus florida*)** A small tree that is typically found in the forest understory but can tolerate full sun. Prefers moist but well-drained soils. It has a relatively broad shape. Blooms in April or May with beautiful white flowers (which are actually bracts, a type of modified leaf). Leaves become bright red or dark purple in fall. Fruits attract birds.

**Ginkgo (male) (*Ginkgo biloba*)** Grows slowly to become a large tree that tolerates a wide range of soil conditions and disturbed urban environments (such as compacted soil and de-icing salt). It has unique, fan-shaped leaves that turn yellow in fall. Only males permitted as female trees produce foul-smelling fruits. Ginkgo are the only surviving member of a group of ancient plants that inhabited earth up to 150 million years ago. Native to China.

**Hackberry (*Celtis occidentalis*)** A medium-to-large tree that tolerates wet and dry soils but prefers moist, well-drained conditions. Develops a beautiful, wide canopy. It has light green, diamond shaped leaves and small, insignificant flowers. Grows small, edible fruits that taste like dates and provide food for wildlife.

**American linden (*Tilia americana*)** A medium-to-large tree that grows in a pyramidal shape. It prefers moist and well-drained soils but will tolerate some drought. Generally intolerant of poor urban conditions (such as compacted soil and de-icing salt). Leaves are dark and slightly heart-shaped. It has attractive, small yellow flowers in spring that have a pleasant fragrance and provide pollen and nectar for bees.

**Red maple (*Acer rubrum*)** A medium-to-large tree that tolerates a variety of soil conditions but prefers medium to wet, well-drained soils. Very cold hardy and somewhat shade tolerant. Leaves emerge as red, then become dark green and turn to vibrant orange or red in fall. Flowers are small and red.

## RECOMMENDED TREE LIST (CONT.)

**Sugar maple (*Acer saccharum*)** A medium-to-large tree with a beautiful round and symmetrical form. Will grow in a variety of soils but prefers moist and well drained conditions. Somewhat shade tolerant. Generally intolerant of poor urban conditions (such as compacted soils and de-icing salt). It has dark green leaves that turn a brilliant yellow, orange or red in fall. Small and insignificant flowers.

**Musclewood (*Carpinus caroliniana*)** Also known as American hornbeam. A small to-medium, slow growing understory tree. Requires full to part shade and prefers moist and nutrient-rich soils. Often grows multi-stemmed and twisted. Bark is smooth grey. It has dark green leaves that turn yellow, orange, or red in fall. Flowers are small and insignificant. Small nuts provide good wildlife food in winter.

**Black oak (*Quercus velutina*)** Slow growing and matures to a large canopy tree. Does best in dry to medium soils that are well-drained. Tolerates drought. It has very dark colored bark and leaves that are red in spring, green in summer and yellow in fall. Flowers are small and insignificant. Acorns are an important wildlife food.

**Bur oak (*Quercus macrocarpa*)** A large, beautiful tree with a spreading canopy. Slow growing. Can adapt to a wide range of soil conditions that are well-drained. Tolerates drought. Flowers are small and insignificant. Acorns are an important wildlife food.

**Chinquapin oak (*Quercus muchlenbergii*)** A medium-sized tree with a round canopy. Tolerates a variety of soil conditions if they are well-drained. Does not do well in compacted soils and should be avoided for sites that experience heavy traffic. Leaves are dark-green, and flowers are small and insignificant. Acorns are an important wildlife food.

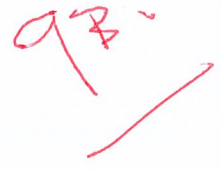
**Northern red oak (*Quercus rubra*)** A medium-to-large tree that does best in well drained soils that have dry to medium moisture levels. It is cold hardy and fast growing for an oak. Leaves emerge as red-pink in spring, become green in summer and becomes brilliant red and orange in fall. Flowers are small and insignificant. Acorns are an important wildlife food.

**Swamp white oak (*Quercus bicolor*)** A medium-to-large tree with a symmetrical and rounded canopy. Does best in medium to wet soil conditions and can do well in poorly drained sites. Will also tolerate some drought. Dark green leaves and small, insignificant flowers. Acorns are an important wildlife food.

**Eastern white pine (*Pinus strobus*)** A medium-to-large evergreen tree that is fast growing and long-lived. Starts as a pyramidal shape and matures to be more oval. Prefers soils that have medium moisture levels and are well-drained. Its long, bluish-green needles are soft to the touch.

**Redbud (*Cercis canadensis*)** A relatively small tree with low branches and a rounded shape. Prefers medium-moisture and well-drained soils. Avoid really wet or poorly-drained conditions. Leaves are heartshaped and small spring flowers are vibrant purple.

## Parks & Recreation Commission Mission Statement



### **Current Mission Statement:**

(9.26.16)

We at the Parks and Recreation Commission in Superior Township are committed to enrich the quality of life of our residents and future generations by providing the highest standard of excellence in public service. Preserving, improving and protecting our parks and valuable natural resources & green spaces achieves this goal. We also strive to create safe and enjoyable recreational opportunities and programs that promote a strong sense of community, increase social interaction, and improve the physical and mental wellbeing of our residents.

### **Suggested Revision Options:**

(3.24.25)

The Superior Township Parks and Recreation Commission strives to enhance the quality of life for our residents and future generations by upholding the highest standards of excellence in public service. We work to achieve this goal through the preservation, enhancement, and protection of our parks, natural resources, and green spaces. Additionally, we are committed to providing safe, enjoyable recreational opportunities and programs that foster a strong sense of community, encourage social interaction, and support the physical and mental well-being of our residents.

Or;

The Superior Township Parks and Recreation Commission is dedicated to enhancing the quality of life for our residents and future generations by maintaining the highest standards of excellence in public service. We achieve this through the preservation, enhancement, and protection of our parks, natural resources, and green spaces. Additionally, we are committed to providing safe, enjoyable recreational opportunities and programs that foster a strong sense of community, encourage social interaction, and promote the physical and mental well-being of our residents.



9c.

March 14, 2025

Juan Bradford  
Superior Charter Township  
Parks & Recreation Department  
575 E. Clark Rd.  
Ypsilanti, MI 48198

Re: Appraisal Report  
Vacant Land  
Cherry Hill Rd.  
Section 20, Superior Township  
Parcel # J-10-20-100-002, 161.84 Ac.

Dear Mr. Bradford:

Please review and acknowledge the following agreement to provide an Appraisal Report for the real property known as Vacant Land, Cherry Hill Rd., Parcel # J-10-20-100-002, 161.84 Ac., Section 20, Superior Township, Washtenaw County, Michigan (herein referred to as the “subject property”).

**Scope of Work:** Upon your acceptance, Peoples Company (PC) will appraise the above referenced property on an “as is” basis. PC will perform a complete appraisal to be reported in an Appraisal Report in compliance with the Uniform Standards of Professional Appraisal Practice (USPAP), and the Department of Natural Resources requirements (DNR).

**Client/Intended User:** The client for this assignment is Superior Charter Township Parks & Recreation Department. Intended users include the client with the Department of Natural Resources (DNR) listed as an additional intended user.

**Intended Use:** The intended use of the appraisal report is to provide an opinion of the market value of the subject property’s fee simple estate as of the date of inspection.

**Time frame:** Work on the assignment is to begin immediately upon acceptance, with results due no later than 21 days from the date of receipt of the signed engagement letter by the appraiser.

**Appraisal fee:** The fee for this assignment will be \$2,500 (Two Thousand Five Hundred Dollars). This fee includes a PDF and one hard copy of the report (if requested). The full fee is due 30 days after submission of the report.



**Contact:** A contact name and phone number are required for inspection purposes:

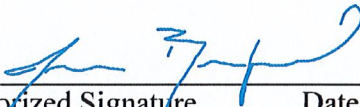
<u>Jaun Bradford</u>	<u>734-649-1991</u>
Contact Name	Contact Phone


Terms and conditions are valid for seven (7) days from the date of the engagement letter. We look forward to providing you with excellent service and reliable valuations. Please contact us with any questions you may have regarding the above terms.

Peoples Company provides additional services such as buyer and seller representation (brokerage) as well as professional farm management. If you are interested in either of the following items below, please check the circle and we will reach out to you.

- Interested in buying/selling a farm/agricultural property.
- Interested in having a farm/agricultural property professionally managed.

Accepted:

  
 \_\_\_\_\_  
 Authorized Signature      Date 3/14/2025

  
 \_\_\_\_\_  
 Peoples Company      Date 3/14/2025

10A  
SUPERIOR TOWNSHIP  
PARKS & RECREATION

Easter  
Egg Hunt

SATURDAY, APRIL 12 @ 11:00AM SHARP

(RAIN DATE: SUNDAY, APRIL 13 @ 11:00AM)

FIREMANS PARK - 8795 MACARTHUR

CHILDREN 11 YEARS AND UNDER

PICTURES WITH THE

EASTER BUNNY

FREE

INFO @ (734) 480-5502



03/18/2025 11:40 AM CHECK DISBURSEMENT REPORT FOR CHARTER TOWNSHIP OF SUPERIOR  
 User: NANCY CHECK DATE FROM 02/25/2025 - 03/24/2025  
 DB: Superior Twp

Check Date	Bank	Check #	Invoice	Payee	Description	Account	Dept	Amount
Fund: 508 PARKS & RECREATION								
02/25/2025	GENL	49318	MARCH 25-GBP	DELTA DENTAL	DENTAL INSURANCE - MARCH 2025	123.050	000	59.00
02/25/2025	GENL	49319	I-A-89645	FASTSIGNS	TRUCK DECALS	985.000	770	1,123.54
02/25/2025	GENL	49323	22725-GBP	SUPERIOR TWP PAYROLL FUND	CASH TRANSFER 2/27/25 PAY	214.704	000	7,927.89
03/04/2025	GENL	49339	INV294401487	SUPERIOR TOWNSHIP CREDIT CARDZOOM	-FEBRUARY 2025	214.101	000	15.99
03/04/2025	GENL	49341	FEB 25-GBP	SUPERIOR TWP PAYROLL FUND	PENSION /HCSP - FEBRUARY 2025	214.704	000	665.82
			FEB 25-GBP		PENSION /HCSP - FEBRUARY 2025	214.704	000	1,097.28
			FEB 25-GBP		PENSION /HCSP - FEBRUARY 2025	214.704	000	315.00
				CHECK GENL 49341	TOTAL FOR FU			<u>2,078.10</u>
03/12/2025	GENL	49344	FEB 25-P	DTE ENERGY	ELECTRIC - PARKS BARN - FEB 25	920.000	770	19.96
03/12/2025	GENL	49348	MPARK25	JUAN BRADFORD	HOTEL @ MPARKS CONFERENCE	910.000	752	395.86
03/12/2025	GENL	49351	31325-GBP	SUPERIOR TWP PAYROLL FUND	CASH TRANSFER - 3/13/25 PAY	214.704	000	9,471.14
03/12/2025	GENL	49352#	26070	TAZ NETWORKS, INC	NETWORK FLAT FEE -MARCH 2025	806.000	752	40.68
			26070		NETWORK FLAT FEE -MARCH 2025	806.000	770	40.67
				CHECK GENL 49352	TOTAL FOR FU			<u>81.35</u>
03/12/2025	GENL	49353	103215387	WEX BANK	FUEL - FEBRUARY	754.000	770	193.11
03/18/2025	GENL	49355	31269334	ABSOPORE WATER COMPANY	COOLER RENTAL - 2025	752.000	770	12.00
			89632010		SPRING WATER	752.000	770	6.50
				CHECK GENL 49355	TOTAL FOR FU			<u>18.50</u>
03/18/2025	GENL	49359	100-11674	BOULLION SALES, INC.	BRUSH TRIMMER MAINTENANCE	752.000	770	19.93
03/18/2025	GENL	49363	FEB 25	DON WALIGORE	CELL PHONE STIPEND - FEB 2025	850.000	770	40.37
03/18/2025	GENL	49372	APRIL 2025	MEDMUTUAL LIFE	LIFE INSURANCE- APRIL 2025	123.050	000	11.35
03/18/2025	GENL	49375	3434461551	O'REILLY AUTOMOTIVE, INC.	TRUCK FUSES	752.000	770	4.79
03/18/2025	GENL	49383	2024-H	SUPERIOR TWP FIRE FUND	HOME DEPOT REBATE	214.206	000	66.81
03/18/2025	GENL	49385	2024-H	SUPERIOR TWP UTILITY DEPARTME	HOME DEPOT REBATE	214.592	000	14.93
03/18/2025	GENL	49387	APRIL 25	VSP INSURANCE CO	VISION INSURANCE - APRIL 2025	123.050	000	15.73
03/18/2025	GENL	49391	70250371-00	WEINGARTZ	TORO 213 REPAIR PARTS	934.000	770	362.37
03/18/2025	GENL	49392	176914	YPSILANTI ACE HARDWARE	OIL DRY	752.000	770	26.97

11A

Check Date	Bank	Check #	Invoice	Payee	Description	Account	Dept	Amount
------------	------	---------	---------	-------	-------------	---------	------	--------

Fund: 508 PARKS & RECREATION

Total for fund 508 PARKS & RECREATION 21,947.69

'-'-INDICATES CHECK DISTRIBUTED TO MORE THAN ONE DEPARTMENT

PERIOD ENDING 02/28/2025

2025

ACTIVITY FOR MONTH

GL NUMBER	DESCRIPTION	ORIGINAL BUDGET	2025 AMENDED BUDGET	YTD BALANCE 02/28/2025	AVAILABLE BALANCE	% BDCGT USED	YTD BALANCE 02/29/2024
<b>Fund 508 - PARKS &amp; RECREATION</b>							
<b>Revenues</b>							
Dept 000 - REVENUE							
508-000-664.000	INTEREST/DIVIDENDS	13,000.00	13,000.00	1,818.43	11,181.57	13.99	2,915.14
508-000-669.000	GAIN/LOSS ON INVESTMENT ACCOUN	11,000.00	11,000.00	599.01	10,400.99	5.45	2,295.24
508-000-674.000	DONATIONS	1,200.00	1,200.00	0.00	1,200.00	0.00	1,927.25
508-000-691.101	GENERAL FUND CONTRIBUTION	390,736.00	390,736.00	65,122.70	325,613.30	16.67	66,266.80
508-000-692.101	RES #2021-20 ADD'L \$ FROM GEN	21,602.00	21,602.00	0.00	21,602.00	0.00	0.00
508-000-699.999	APPROPRIATION FROM FUND BALANC	85,000.00	85,000.00	0.00	85,000.00	0.00	0.00
<b>Total Dept 000 - REVENUE</b>		<b>522,538.00</b>	<b>522,538.00</b>	<b>67,540.14</b>	<b>454,997.86</b>	<b>12.93</b>	<b>73,404.43</b>
<b>TOTAL REVENUES</b>		<b>522,538.00</b>	<b>522,538.00</b>	<b>67,540.14</b>	<b>454,997.86</b>	<b>12.93</b>	<b>73,404.43</b>
<b>Expenditures</b>							
Dept 752 - PARK & REC ADMINISTRATION							
508-752-703.000	SALARIES	89,602.00	89,602.00	17,231.10	72,370.90	19.23	16,893.25
508-752-703.001	COMMISSION STIPENDS	20,586.00	20,586.00	2,952.36	17,633.64	14.34	3,547.64
508-752-709.000	FICA	21,923.00	21,923.00	3,641.83	18,281.17	16.61	3,333.13
508-752-715.000	PENSION	27,695.00	27,695.00	4,742.73	22,952.27	17.12	4,066.64
508-752-725.000	TAXABLE BENEFITS	20,548.00	20,548.00	7,943.50	12,604.50	38.66	7,690.25
508-752-725.001	HCSF	3,780.00	3,780.00	630.00	3,150.00	16.67	600.00
508-752-752.000	OPERATING SUPPLIES	1,000.00	1,000.00	49.99	950.01	5.00	177.84
508-752-804.000	PROFESSIONAL SERVICES - AUDIT	1,200.00	1,200.00	0.00	1,200.00	0.00	0.00
508-752-806.000	PROFESSIONAL SERVICES - OTHER	2,001.00	2,001.00	113.34	1,887.66	5.66	119.50
508-752-826.000	BANK FEES & CHARGES	300.00	300.00	32.24	267.76	10.75	26.96
508-752-840.002	DENTAL INSURANCE	719.00	719.00	118.00	601.00	16.41	114.12
508-752-840.003	VISION INSURANCE	198.00	198.00	31.46	166.54	15.89	31.46
508-752-840.004	LIFE INSURANCE	143.00	143.00	22.70	120.30	15.87	22.70
508-752-850.000	TELECOMMUNICATIONS	600.00	600.00	49.94	550.06	8.32	99.78
508-752-851.000	POSTAGE	100.00	100.00	0.00	100.00	0.00	0.00
508-752-860.000	TRANSPORTATION	100.00	100.00	0.00	100.00	0.00	0.00
508-752-900.000	PRINTING & PUBLISHING	500.00	500.00	0.00	500.00	0.00	0.00
508-752-910.000	TRAINING	2,000.00	2,000.00	0.00	2,000.00	0.00	70.00
508-752-915.000	MEMBERSHIPS & DUES	700.00	700.00	659.00	41.00	94.14	545.00
508-752-934.000	REPAIR & MAINTENANCE	500.00	500.00	0.00	500.00	0.00	0.00
508-752-935.000	INSURANCE & BONDS	12,500.00	12,500.00	2,092.40	10,407.60	16.74	2,011.55
508-752-940.000	OFFICE RENT	7,000.00	7,000.00	7,000.00	0.00	100.00	0.00
508-752-955.000	MISC. EXPENSE	200.00	200.00	0.00	200.00	0.00	0.00
508-752-986.000	EQUIPMENT UNDER \$5,000	1,000.00	1,000.00	0.00	1,000.00	0.00	0.00
<b>Total Dept 752 - PARK &amp; REC ADMINISTRATION</b>		<b>214,895.00</b>	<b>214,895.00</b>	<b>47,310.59</b>	<b>167,584.41</b>	<b>22.02</b>	<b>39,349.82</b>
Dept 756 - RECREATION							
508-756-703.000	SALARIES	12,311.00	12,311.00	0.00	12,311.00	0.00	0.00
508-756-740.000	OPERATING SUPPLIES	4,500.00	4,500.00	0.00	4,500.00	0.00	0.00
508-756-806.000	PROFESSIONAL SERVICES - OTHER	9,000.00	9,000.00	675.00	8,325.00	7.50	1,540.03
508-756-860.000	TRANSPORTATION	100.00	100.00	0.00	100.00	0.00	0.00
508-756-930.000	REPAIR & MAINTENANCE	500.00	500.00	0.00	500.00	0.00	0.00
508-756-955.000	SIGNAGE	2,000.00	2,000.00	0.00	2,000.00	0.00	0.00
<b>Total Dept 756 - RECREATION</b>		<b>28,411.00</b>	<b>28,411.00</b>	<b>675.00</b>	<b>27,736.00</b>	<b>2.38</b>	<b>1,540.03</b>
Dept 770 - PARK MAINTENANCE							

12A

PERIOD ENDING 02/28/2025

GL NUMBER	DESCRIPTION	2025		YTD BALANCE 02/28/2025	ACTIVITY FOR MONTH 02/28/25	AVAILABLE BALANCE	% BCGT USED	YTD BALANCE 02/29/2024
		ORIGINAL BUDGET	2025 AMENDED BUDGET					
<b>Fund 508 - PARKS &amp; RECREATION</b>								
<b>Expenditures</b>								
508-770-703.000	SALARIES	143,964.00	143,964.00	16,399.51	6,658.13	127,564.49	11.39	14,372.09
508-770-725.000	TAXABLE BENEFITS	4,068.00	4,068.00	3,595.89	0.00	472.11	88.39	1,574.35
508-770-740.003	HERBICIDE (NON-SELECTIVE)	500.00	500.00	0.00	0.00	500.00	0.00	0.00
508-770-752.000	OPERATING SUPPLIES	7,500.00	7,500.00	453.61	86.05	7,046.39	6.05	1,640.92
508-770-754.000	FUEL-LUBRICANTS	7,000.00	7,000.00	364.21	193.11	6,635.79	5.20	395.61
508-770-767.000	UNIFORMS	800.00	800.00	0.00	0.00	800.00	0.00	173.00
508-770-805.000	CONTROLLED BURNS	6,000.00	6,000.00	0.00	0.00	6,000.00	0.00	0.00
508-770-806.000	PROFESSIONAL SERVICES - OTHER	1,200.00	1,200.00	81.34	40.67	1,118.66	6.78	347.52
508-770-850.000	TELECOMMUNICATIONS	1,800.00	1,800.00	80.74	40.37	1,719.26	4.49	130.14
508-770-860.000	TRANSPORTATION	100.00	100.00	0.00	0.00	100.00	0.00	0.00
508-770-910.000	TRAINING	1,000.00	1,000.00	0.00	0.00	1,000.00	0.00	645.00
508-770-920.000	UTILITIES	500.00	500.00	39.68	19.96	460.32	7.94	43.77
508-770-934.000	REPAIR & MAINTENANCE	13,500.00	13,500.00	2,206.53	0.00	11,293.47	16.34	1,030.39
508-770-934.001	SAND-GRAVEL-BARK-SOIL	2,500.00	2,500.00	0.00	0.00	2,500.00	0.00	0.00
508-770-955.000	SIGNAGE	800.00	800.00	0.00	0.00	800.00	0.00	0.00
508-770-985.000	EQUIPMENT OVER \$5,000	85,000.00	85,000.00	1,123.54	1,123.54	83,876.46	1.32	0.00
508-770-986.000	EQUIPMENT UNDER \$5,000	3,000.00	3,000.00	0.00	0.00	3,000.00	0.00	795.60
<b>Total Dept 770 - PARK MAINTENANCE</b>		<b>279,232.00</b>	<b>279,232.00</b>	<b>24,345.05</b>	<b>8,161.83</b>	<b>254,886.95</b>	<b>8.72</b>	<b>21,148.39</b>
<b>TOTAL EXPENDITURES</b>		<b>522,538.00</b>	<b>522,538.00</b>	<b>72,330.64</b>	<b>22,003.54</b>	<b>450,207.36</b>	<b>13.84</b>	<b>62,038.24</b>
<b>Fund 508 - PARKS &amp; RECREATION:</b>								
<b>TOTAL REVENUES</b>		<b>522,538.00</b>	<b>522,538.00</b>	<b>67,540.14</b>	<b>32,561.33</b>	<b>454,997.86</b>	<b>12.93</b>	<b>73,404.43</b>
<b>TOTAL EXPENDITURES</b>		<b>522,538.00</b>	<b>522,538.00</b>	<b>72,330.64</b>	<b>22,003.54</b>	<b>450,207.36</b>	<b>13.84</b>	<b>62,038.24</b>
<b>NET OF REVENUES &amp; EXPENDITURES</b>		<b>0.00</b>	<b>0.00</b>	<b>(4,790.50)</b>	<b>10,557.79</b>	<b>4,790.50</b>	<b>100.00</b>	<b>11,366.19</b>