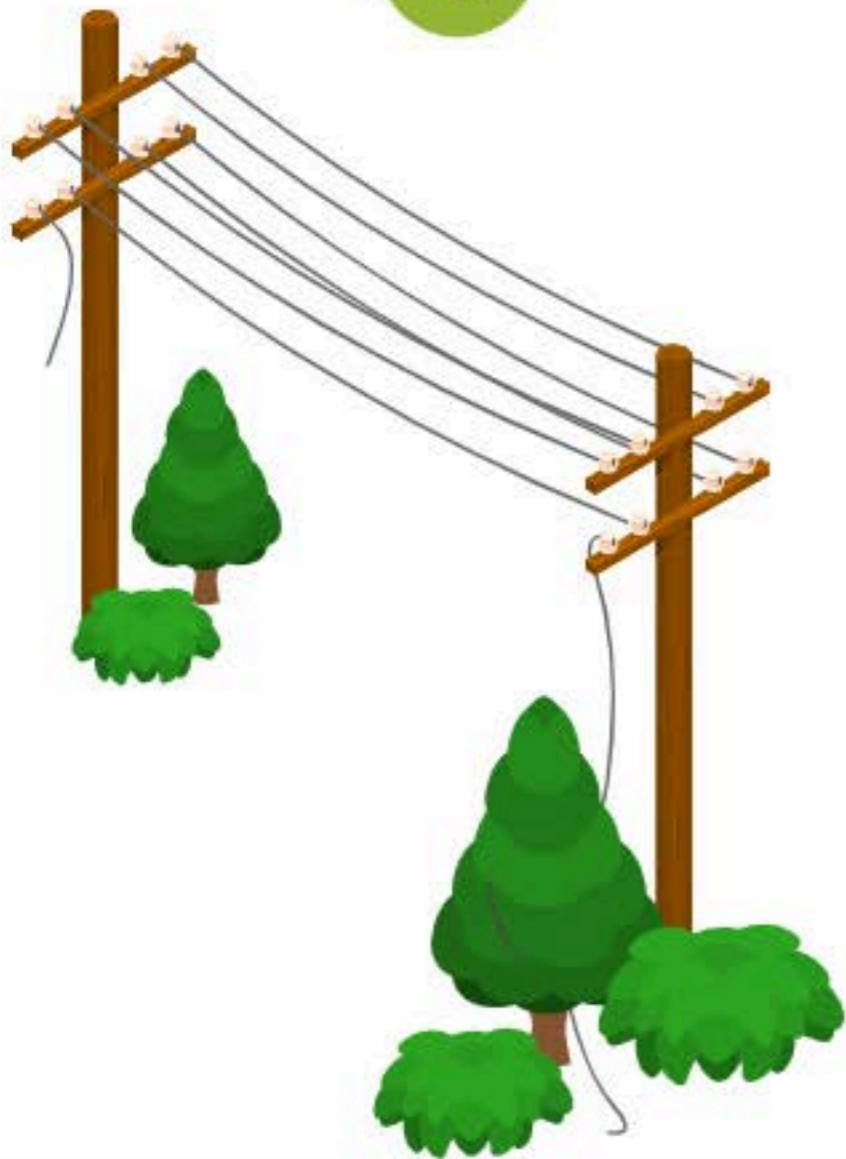
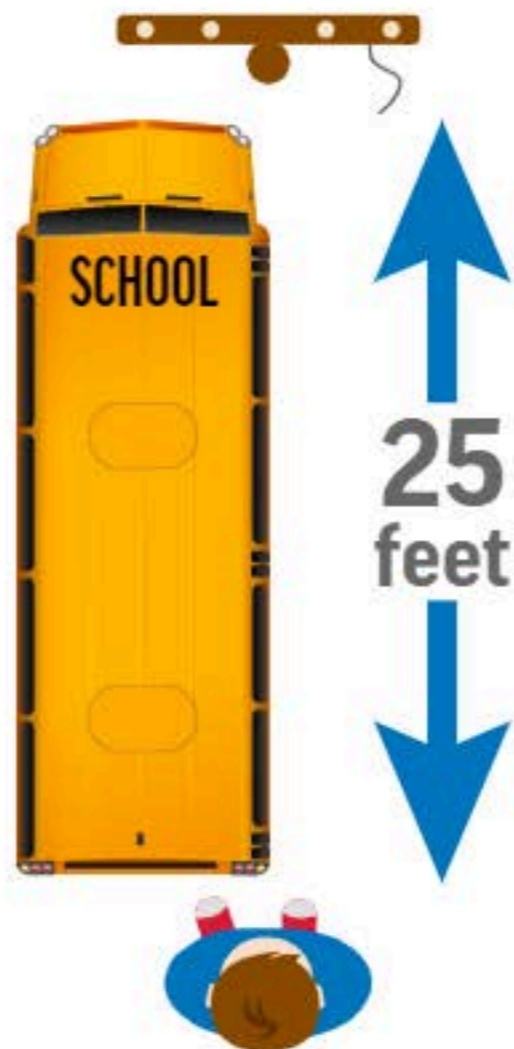


What to do if you see a downed power line

1.



2.



3.



Look up to know what's down.

Downed lines may be on the ground, wrapped in a tree or hiding behind tall grass or weeds.

Stay a school bus-length away.

Consider all lines live and stay at least 25 feet, or a school bus-length, away from the line and anything it comes in contact with.

Report it.

Use the DTE Energy mobile app or call DTE at 800.477.4747 or contact 911 to report the downed line.