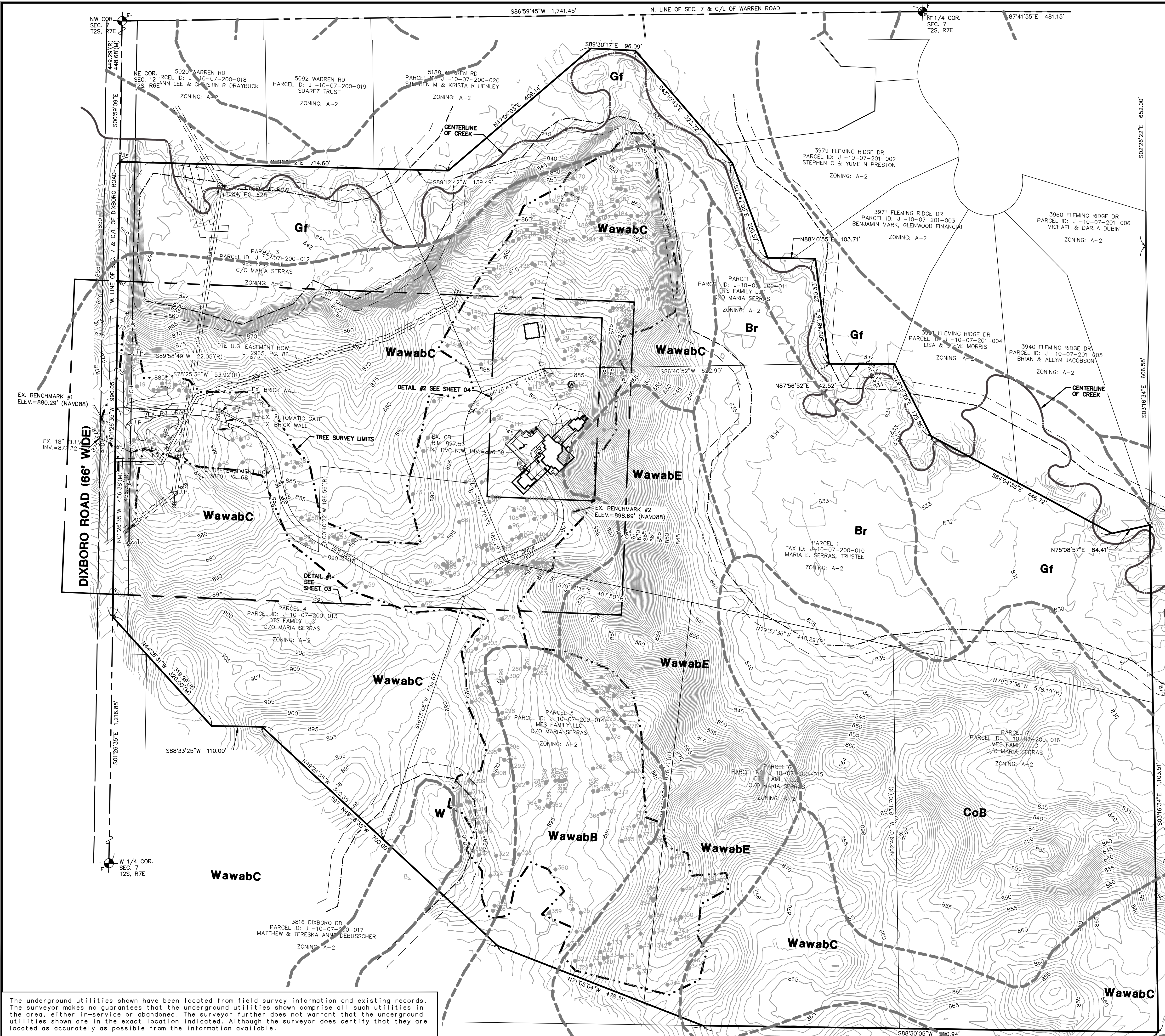


M:\Civ\132_P\1322266\Drawings\1322266.dwg, 3/24/2023 10:10 AM, Candice M. Briere, 02 OVERALL EXISTING CONDITIONS & NATURAL FEATURES PLAN, MCLLC PDF, .pdf
Copyright © 2023, Midwestern Consulting L.L.C. All rights reserved. No part of this drawing may be used or reproduced in any form or by any means, or stored in a database or retrieval system, without prior permission of Midwestern Consulting L.L.C.



- NOTES**
1. THE BASE SURVEY WAS PREPARED BY MIDWESTERN CONSULTING IN NOVEMBER 2022. ALL UNDERGROUND UTILITIES AND STRUCTURES HAVE BEEN SHOWN TO A REASONABLE DEGREE OF ACCURACY AND IT SHALL BE THE CONTRACTOR'S RESPONSIBILITY TO VERIFY THEIR EXACT LOCATION AND TO AVOID DAMAGE THERETO. THE CONTRACTOR SHALL REPORT ANY DISCREPANCIES TO THE ENGINEER PRIOR TO COMMENCING WORK.
 2. EXISTING WETLANDS HAVE BEEN DEPICTED BASED ON AVAILABLE US FISH AND WILDLIFE SERVICE NATIONAL WETLANDS INVENTORY DATA.
 3. THIS SITE IS LOCATED IN AN AREA OF MINIMAL FLOOD HAZARD (ZONE X) PER FEMA FLOOD INSURANCE RATE MAP PANELS 26161C0258 AND 26161C0260 DATED APRIL 3, 2012.
 4. PER THE WASHTENAW COUNTY DRAIN INFORMATION AVAILABLE ON MAP WASHTENAW, THIS SITE DOES NOT APPEAR TO CONTAIN A DESIGNATED COUNTY DRAIN.

BENCHMARKS

BENCHMARK #1: SET MAG NAIL IN EAST SIDE OF 10" OAK LOCATED ±5' WEST OF DIXBORO DIRECTLY ACROSS FROM ENTRANCE.
ELEVATION: 880.29' (NAVD88)

BENCHMARK #2: SET NAIL IN NORTHWEST SIDE OF 8" WALNUT, LOCATED ON EAST SIDE OF DRIVEWAY.
ELEVATION: 898.69' (NAVD88)

- LEGEND**
- 838 EXIST. CONTOUR
 - x836.2 EXIST. SPOT ELEVATION
 - U.P. EXIST. UTILITY POLE
 - GUY WIRE
 - OH EXIST. OVERHEAD UTILITY LINE
 - r-o EXIST. STORM SEWER
 - EXIST. CATCH BASIN OR INLET
 - |— CULVERT
 - s-o- EXIST. SANITARY SEWER
 - ⊙ EXIST. CLEANOUT
 - ⊙ cotv CABLE TELEVISION RISER
 - SINGLE TREE
 - - - - - EXIST. SOIL TYPE LIMITS
 - - - - - EXIST. SOIL TYPE
 - · - · - · - TREE SURVEY LIMITS
 - - - - - CREEK CENTERLINE

GENERAL SOILS DESCRIPTION
BASED ON SOIL SURVEY OF WASHTENAW COUNTY MICHIGAN

Br - BROOKSTON LOAM
CoB - CONOVER LOAM, 0 TO 4 PERCENT SLOPES
CpA - CONOVER-BROOKSTON LOAMS, 0 TO 2 PERCENT SLOPES
Gf - GILFORD SANDY LOAM
W - WATER
WawabB - WAWASEE LOAM, 2 TO 6 PERCENT SLOPES
WawabC - WAWASEE LOAM, 6 TO 12 PERCENT SLOPES
WawabE - WAWASEE LOAM, 18 TO 25 PERCENT SLOPES

CURVE DATA

| CURVE | ARC | RADIUS | DELTA | CHORD BEARING | CHORD DISTANCE |
|-------|---------|---------|-----------|---------------|----------------|
| C1 | 170.86' | 150.00' | 65°15'47" | S08°09'09"W | 161.77' |
| C2 | 178.07' | 150.00' | 68°01'07" | N42°12'18"W | 167.80' |
| C3 | 96.43' | 100.00' | 55°15'01" | N35°49'14"W | 92.74' |
| C4 | 133.09' | 200.00' | 38°07'44" | N82°30'33"W | 130.65' |
| C5(M) | 40.37' | 200.00' | 11°33'39" | N89°14'28"W | 40.31' |
| C5(R) | 41.87' | 200.00' | 11°33'39" | N89°14'28"W | 41.80' |
| C6 | 29.52' | 100.00' | 16°54'43" | N54°17'30"E | 29.41' |
| C7(M) | 44.77' | 150.00' | 17°03'18" | N54°22'25"E | 44.61' |
| C7(R) | 45.44' | 150.00' | 17°03'18" | N54°30'48"E | 45.27' |

The underground utilities shown have been located from field survey information and existing records. The surveyor makes no guarantees that the underground utilities shown comprise all such utilities in the area, either in-service or abandoned. The surveyor further does not warrant that the underground utilities shown are in the exact location indicated. Although the surveyor does certify that they are located as accurately as possible from the information available.

MIDWESTERN CONSULTING
3845 Plaza Drive Ann Arbor, Michigan 48108
(734) 995-0200 • www.midwesternconsulting.com
Land Development • Land Survey • Institutional • Municipal
Wireless Communications • Transportation • Landfill Services

CLIENT
GARRETT'S SPACE
1400 GRANGER AVENUE
ANN ARBOR, MI 48104
SCOTT HALPERT
(734) 709-7684

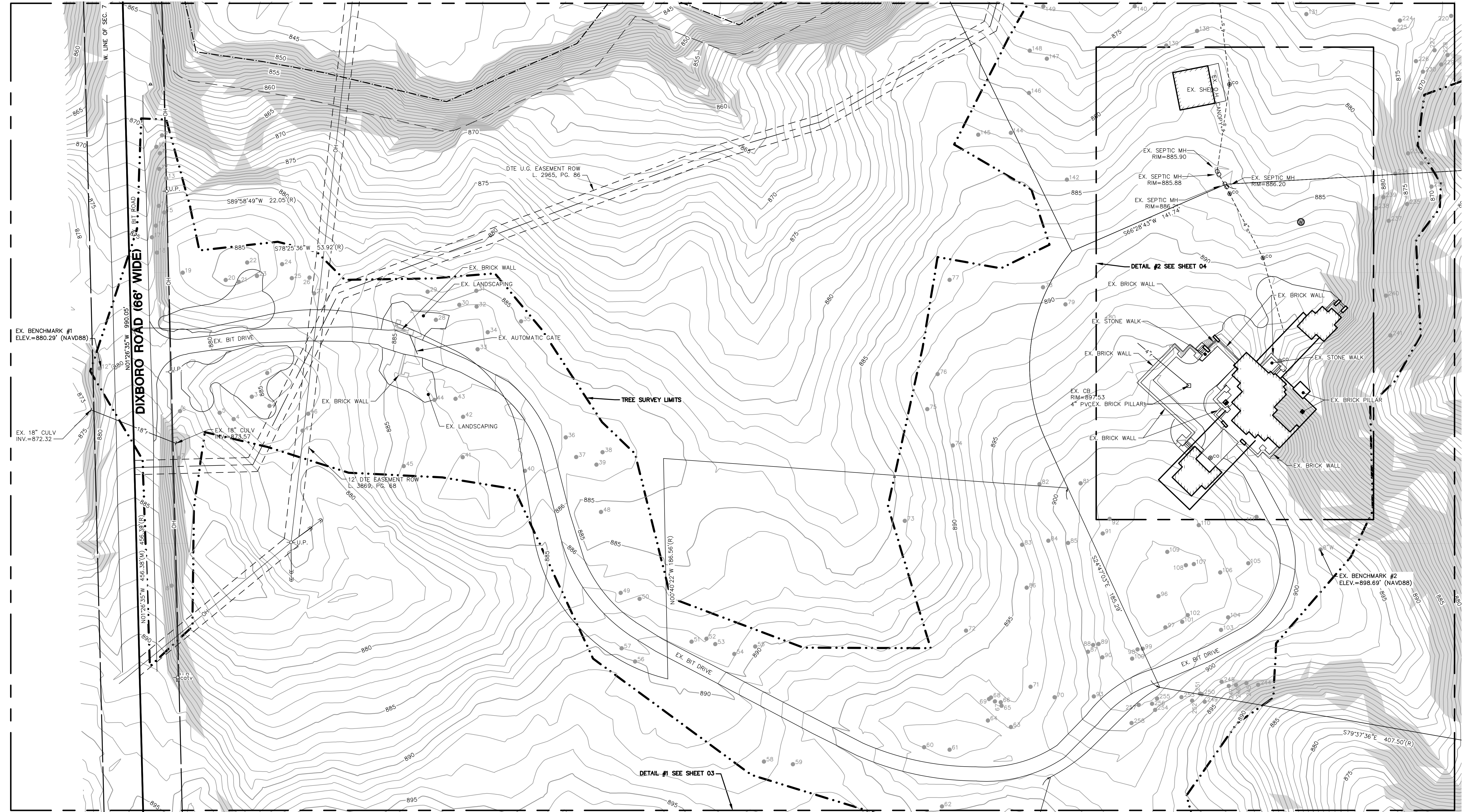
JOB No. 22265

DATE: 03/24/2023
SHEET 02 OF 15
ADD: CAR
ENG: TPB
PK: TJC
TECH: JAW
FILE: 0058

02

GARRETT'S SPACE
OVERALL EXISTING CONDITIONS & NATURAL FEATURES PLAN

DETAIL #1



GENERAL SOILS DESCRIPTION
 BASED ON SOIL SURVEY OF WASHTENAW COUNTY MICHIGAN

Br - BROOKSTON LOAM
 CoB - CONOVER LOAM, 0 TO 4 PERCENT SLOPES
 CoA - CONOVER-BROOKSTON LOAMS, 0 TO 2 PERCENT SLOPES
 Gf - GILFORD SANDY LOAM
 W - WATER

WawobB - WAWASEE LOAM, 2 TO 6 PERCENT SLOPES
 WawobC - WAWASEE LOAM, 6 TO 12 PERCENT SLOPES
 WawobE - WAWASEE LOAM, 18 TO 25 PERCENT SLOPES

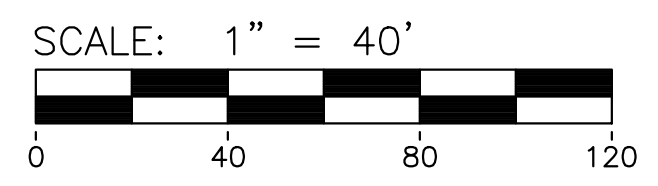
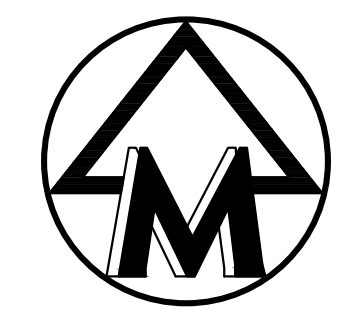
- LEGEND**
- 838 - EXIST. CONTOUR
 - x836.2 - EXIST. SPOT ELEVATION
 - U.P. - EXIST. UTILITY POLE
 - GUY WIRE
 - OH - EXIST. OVERHEAD UTILITY LINE
 - r - EXIST. STORM SEWER
 - - EXIST. CATCH BASIN OR INLET
 - CULVERT
 - s - EXIST. SANITARY SEWER
 - - EXIST. CLEANOUT
 - ▲ - SIGN
 - catv - CABLE TELEVISION RISER
 - ⊙ - WELL
 - - SINGLE TREE
 - △ - CONTROL PT.

- Xxx - EXIST. SOIL TYPE LIMITS
- █ - EXIST. SOIL TYPE
- █ (shaded) - SLOPES OVER 25%
- · - · - TREE SURVEY LIMITS

BENCHMARKS

BENCHMARK #1: SET MAG NAIL IN EAST SIDE OF 10" OAK LOCATED ±5' WEST OF DIXBORO DIRECTLY ACROSS FROM ENTRANCE. ELEVATION: 880.29' (NAVD88)

BENCHMARK #2: SET NAIL IN NORTHWEST SIDE OF 8" WALNUT. LOCATED ON EAST SIDE OF DRIVEWAY. ELEVATION: 898.69' (NAVD88)



M:\Civ\134_Proj\132265\Tree Plan\132265.dwg, 3/24/2023 10:10 AM, Candice M. Briere, 03 ENLARGED EXISTING CONDITIONS, MCLC PDF, p.3
 Copyright © 2023, Midwestern Consulting L.L.C. All rights reserved. No part of this drawing may be used or reproduced in any form or by any means, or stored in a database or retrieval system, without prior permission of Midwestern Consulting L.L.C.

The underground utilities shown have been located from field survey information and existing records. The surveyor makes no guarantees that the underground utilities shown comprise all such utilities in the area, either in-service or abandoned. The surveyor further does not warrant that the underground utilities shown are in the exact location indicated. Although the surveyor does certify that they are located as accurately as possible from the information available.

| |
|--|
| <p>MIDWESTERN CONSULTING 3855 Plaza Drive Ann Arbor, Michigan 48108 (734) 995-0200 • www.midwesternconsulting.com Land Development • Land Survey • Institutional • Municipal Wireless Communications • Transportation • Landfill Services</p> |
| <p>CLIENT</p> <p>GARRETT'S SPACE 1400 GRANGER AVENUE ANN ARBOR, MI 48104 SCOTT HALPERT (734)-709-7684</p> |
| <p>JOB No. 22265</p> <p>REVISIONS:</p> |
| <p>03</p> |
| <p>GARRETT'S SPACE</p> <p>ENLARGED EXISTING CONDITIONS</p> |
| <p>DATE: 03/24/2023 SHEET 03 OF 15 CADD: CAR ENG: TPB PM: TJC TECH: SKY, DWG FSB: 1058</p> |



TREE LIST

| TAG# | DBH | COMMON NAME | GENUS/SPECIES | STEMS | SCORE | LM | INV | REM |
|------|-----|------------------|------------------------|-------|-------|----|-----|-----|
| 1 | 14" | Scotch Pine | Pinus sylvestris | | | | | |
| 2 | 14" | Douglas-fir | Pseudotsuga menziesii | | | | | |
| 3 | 15" | Douglas-fir | Pseudotsuga menziesii | | | | | |
| 4 | 13" | Douglas-fir | Pseudotsuga menziesii | | | | | |
| 5 | 8" | Douglas-fir | Pseudotsuga menziesii | | | | | |
| 6 | 8" | American Elm | Ulmus americana | | | | | X |
| 7 | 11" | Cottonwood | Populus deltoides | | | | | X |
| 8 | 8" | Black Walnut | Juglans nigra | | | | | X |
| 9 | 20" | Black Locust | Robinia pseudoacaci | | | | | X |
| 10 | 13" | American Elm | Ulmus americana | | | | | X |
| 11 | 8" | Sugar Maple | Acer saccharum | twin | | | | |
| 12 | 10" | Sugar Maple | Acer saccharum | | | | | |
| 13 | 8" | Pignut Hickory | Carya glabra | | | | | X |
| 14 | 12" | Black Locust | Robinia pseudoacaci | | | | | X |
| 15 | 16" | Black Walnut | Juglans nigra | | | | | X |
| 16 | 8" | Black Locust | Robinia pseudoacaci | | | | | X |
| 17 | 16" | Black Locust | Robinia pseudoacaci | | | | | X |
| 18 | 13" | Black Locust | Robinia pseudoacaci | | | | | X |
| 19 | 15" | Black Locust | Robinia pseudoacaci | | | | | X |
| 20 | 9" | Douglas-fir | Pseudotsuga menziesii | | | | | |
| 21 | 17" | Douglas-fir | Pseudotsuga menziesii | | | | | |
| 22 | 12" | Douglas-fir | Pseudotsuga menziesii | | | | | |
| 23 | 12" | Douglas-fir | Pseudotsuga menziesii | | | | | |
| 24 | 14" | Norway Spruce | Picea abies | | | | | |
| 25 | 13" | White Pine | Pinus strobus | | | | | |
| 26 | 12" | White Pine | Pinus strobus | | | | | |
| 27 | 16" | White Pine | Pinus strobus | | | | | |
| 28 | 14" | White Spruce | Picea canadensis | | | | | |
| 29 | 8" | Douglas-fir | Pseudotsuga menziesii | twin | | | | |
| 30 | 17" | White Pine | Pinus strobus | | | | | |
| 31 | 17" | White Pine | Pinus strobus | | | | | |
| 32 | 12" | Douglas-fir | Pseudotsuga menziesii | | | | | |
| 33 | 10" | White Pine | Pinus strobus | | | | | |
| 34 | 16" | White Pine | Pinus strobus | | | | | |
| 35 | 16" | Douglas-fir | Pseudotsuga menziesii | | | | | X |
| 36 | 17" | White Pine | Pinus strobus | | | | | |
| 37 | 16" | White Pine | Pinus strobus | | | | | |
| 38 | 14" | White Pine | Pinus strobus | | | | | |
| 39 | 14" | White Pine | Pinus strobus | | | | | |
| 40 | 15" | Tree-of-heaven | Ailanthus altissima | | | | | X |
| 41 | 14" | Box Elder | Acer negundo | | | | | X |
| 42 | 14" | White Pine | Pinus strobus | | | | | X |
| 43 | 13" | White Pine | Pinus strobus | | | | | X |
| 44 | 14" | White Pine | Pinus strobus | | | | | X |
| 45 | 11" | Sugar Maple | Acer saccharum | | | | | X |
| 46 | 9" | Douglas-fir | Pseudotsuga menziesii | | | | | X |
| 47 | 8" | Siberian Elm | Ulmus pumila | | | | | X |
| 48 | 8" | American Elm | Ulmus americana | | | | | X |
| 49 | 8" | Blue Spruce | Picea pungens | | | | | X |
| 50 | 17" | Norway Spruce | Picea abies | | | | | X |
| 51 | 22" | White Pine | Pinus strobus | | | | | X |
| 52 | 13" | White Pine | Pinus strobus | | | | | X |
| 53 | 17" | American Elm | Ulmus americana | | | | | X |
| 54 | 8" | Black Walnut | Juglans nigra | | | | | X |
| 55 | 17" | Black Walnut | Juglans nigra | | | | | X |
| 56 | 16" | White Pine | Pinus strobus | | | | | X |
| 57 | 12" | Blue Spruce | Picea pungens | | | | | X |
| 58 | 10" | Black Walnut | Juglans nigra | | | | | X |
| 59 | 9" | Black Walnut | Juglans nigra | | | | | X |
| 60 | 14" | White Pine | Pinus strobus | twin | | | | |
| 61 | 10" | Blue Spruce | Picea pungens | | | | | X |
| 62 | 12" | Black Walnut | Juglans nigra | | | | | X |
| 63 | 16" | Shagbark Hickory | Carya ovata | | | | | X |
| 64 | 31" | White Oak | Quercus alba | | | | | X |
| 65 | 16" | Pignut Hickory | Carya glabra | | | | | X |
| 66 | 14" | Pignut Hickory | Carya glabra | | | | | X |
| 67 | 13" | Pignut Hickory | Carya glabra | | | | | X |
| 68 | 9" | Pignut Hickory | Carya glabra | | | | | X |
| 69 | 9" | Pignut Hickory | Carya glabra | | | | | X |
| 70 | 10" | Black Walnut | Juglans nigra | | | | | X |
| 71 | 10" | Black Walnut | Juglans nigra | | | | | X |
| 72 | 19" | Shagbark Hickory | Carya ovata | | | | | X |
| 73 | 8" | American Elm | Ulmus americana | | | | | X |
| 74 | 12" | Red Oak | Quercus rubra | | | | | X |
| 75 | 11" | Red Oak | Quercus rubra | | | | | X |
| 76 | 9" | Blue Spruce | Picea pungens | | | | | X |
| 77 | 9" | Blue Spruce | Picea pungens | | | | | X |
| 78 | 11" | Blue Spruce | Picea pungens | | | | | X |
| 79 | 12" | Blue Spruce | Picea pungens | | | | | X |
| 80 | 9" | American Elm | Ulmus americana | | | | | X |
| 81 | 7" | American Elm | Ulmus americana | twin | | | | X |
| 82 | 11" | Black Walnut | Juglans nigra | | 40% | | | X |
| 83 | 9" | Green Ash | Fraxinus pennsylvanica | | 40% | | | X |
| 84 | 15" | Black Walnut | Juglans nigra | | | | | X |
| 85 | 8" | American Elm | Ulmus americana | twin | | | | X |
| 86 | 9" | American Elm | Ulmus americana | | | | | X |
| 87 | 8" | American Elm | Ulmus americana | | | | | X |
| 88 | 8" | Red Oak | Quercus rubra | | | | | X |
| 89 | 9" | Red Oak | Quercus rubra | | | | | X |
| 90 | 14" | Red Oak | Quercus rubra | | | | | X |
| 91 | 8" | White Oak | Quercus alba | | | | | X |
| 92 | 9" | Black Walnut | Juglans nigra | | | | | X |
| 93 | 8" | Shagbark Hickory | Carya ovata | | | | | X |
| 94 | 5" | Alder | Alnus incana | quint | | | | X |
| 95 | 10" | Bradford Pear | Pyrus calleryana | | | | | X |
| 96 | 16" | Red Oak | Quercus rubra | | | | | X |
| 97 | 8" | White Spruce | Picea canadensis | | | | | X |
| 98 | 13" | White Pine | Pinus strobus | | | | | X |
| 99 | 8" | Red Oak | Quercus rubra | | | | | X |
| 100 | 9" | Red Oak | Quercus rubra | | | | | X |
| 101 | 8" | Red Oak | Quercus rubra | | | | | X |
| 102 | 9" | Red Oak | Quercus rubra | | | | | X |
| 103 | 9" | Shagbark Hickory | Carya ovata | | | | | X |
| 104 | 11" | Red Oak | Quercus rubra | | | | | X |
| 105 | 15" | White Pine | Pinus strobus | | | | | X |
| 106 | 9" | Red Oak | Quercus rubra | | | | | X |
| 107 | 25" | Shagbark Hickory | Carya ovata | | | | | X |
| 108 | 9" | Shagbark Hickory | Carya ovata | | | | | X |
| 109 | 8" | Black Cherry | Prunus serotina | | | | | X |
| 110 | 12" | Black Walnut | Juglans nigra | | | | | X |
| 111 | 12" | American Elm | Ulmus americana | | | | | X |
| 112 | 8" | American Elm | Ulmus americana | | | | | X |
| 113 | 9" | Cottonwood | Populus deltoides | | | | | X |
| 114 | 12" | White Pine | Pinus strobus | | | | | X |
| 115 | 11" | Blue Spruce | Picea pungens | | | | | X |
| 116 | 12" | White Pine | Pinus strobus | | | | | X |
| 117 | 12" | White Pine | Pinus strobus | | | | | X |
| 118 | 10" | Norway Spruce | Picea abies | | | | | X |
| 119 | 10" | Norway Spruce | Picea abies | | | | | X |
| 120 | 8" | Blue Spruce | Picea pungens | | | | | X |
| 121 | 8" | Blue Spruce | Picea pungens | | | | | X |
| 122 | 8" | Blue Spruce | Picea pungens | | | | | X |
| 123 | 14" | White Pine | Pinus strobus | | | | | X |
| 124 | 14" | White Pine | Pinus strobus | | | | | X |

| TAG# | DBH | COMMON NAME | GENUS/SPECIES | STEMS | SCORE | LM | INV | REM |
|------|-----|-------------------|---------------------|-------|-------|----|-----|-----|
| 125 | 12" | Red Oak | Quercus rubra | | | | | |
| 126 | 9" | American Elm | Ulmus americana | | | | | |
| 127 | 9" | Blue Spruce | Picea pungens | | | | | |
| 128 | 10" | American Elm | Ulmus americana | | | | | |
| 129 | 14" | American Elm | Ulmus americana | | | | | |
| 130 | 13" | American Elm | Ulmus americana | | | | | |
| 131 | 11" | Pignut Hickory | Carya glabra | | | | | |
| 132 | 9" | American Elm | Ulmus americana | | | | | |
| 133 | 9" | American Elm | Ulmus americana | | | | | |
| 134 | 8" | Black Cherry | Prunus serotina | | | | | X |
| 135 | 9" | American Elm | Ulmus americana | | | | | X |
| 136 | 9" | Common Pear | Pyrus communis | | | | | X |
| 137 | 8" | American Elm | Ulmus americana | | | | | X |
| 138 | 9" | Red Maple | Acer rubrum | | | | | X |
| 139 | 12" | Black Pine | Pinus nigra | | | | | X |
| 140 | 8" | American Elm | Ulmus americana | | 40% | | | |
| 141 | 8" | American Elm | Ulmus americana | | 40% | | | |
| 142 | 13" | Black Pine | Pinus nigra | | | | | |
| 143 | 12" | Black Pine | Pinus nigra | | | | | |
| 144 | 10" | Red Oak | Quercus rubra | | | | | |
| 145 | 19" | Shagbark Hickory | Carya ovata | | | | | X |
| 146 | 8" | Black Cherry | Prunus serotina | | | | | X |
| 147 | 12" | American Elm | Ulmus americana | | | | | X |
| 148 | 10" | American Elm | Ulmus americana | | | | | X |
| 149 | 14" | Red Oak | Quercus rubra | | | | | X |
| 150 | 19" | Red Oak | Quercus rubra | | | | | X |
| 151 | 8" | American Elm | Ulmus americana | | | | | X |
| 152 | 8" | Bitternut Hickory | Carya cordiformis | | | | | X |
| 153 | 9" | Bitternut Hickory | Carya cordiformis | | | | | X |
| 154 | 8" | Bitternut Hickory | Carya cordiformis | | | | | X |
| 155 | 8" | Bitternut Hickory | Carya cordiformis | | | | | X |
| 156 | 9" | Bitternut Hickory | Carya cordiformis | | | | | X |
| 157 | 13" | Black Cherry | Prunus serotina | | | | | X |
| 158 | 8" | American Elm | Ulmus americana | | | | | X |
| 159 | 10" | Black Walnut | Juglans nigra | | | | | X |
| 160 | 10" | American Elm | Ulmus americana | | | | | X |
| 161 | 8" | American Elm | Ulmus americana | | | | | X |
| 162 | 9" | Black Cherry | Prunus serotina | | | | | X |
| 163 | 11" | American Elm | Ulmus americana | | | | | X |
| 164 | 15" | White Mulberry | Morus alba | | | | | X |
| 165 | 9" | American Elm | Ulmus americana | | | | | X |
| 166 | 8" | Box Elder | Acer negundo | | | | | X |
| 167 | 10" | American Elm | Ulmus americana | | | | | X |
| 168 | 9" | Tree-of-heaven | Ailanthus altissima | | | | | X |
| 169 | 10" | American Elm | Ulmus americana | | | | | X |
| 170 | 11" | Black Walnut | Juglans nigra | | | | | X |
| 171 | 12" | Cottonwood | Populus deltoides | | | | | X |
| 172 | 10" | Cottonwood | Populus deltoides | | | | | X |
| 173 | 10" | Cottonwood | Populus deltoides | | | | | X |
| 174 | 10" | Cottonwood | Populus deltoides | | | | | X |
| 175 | 10" | Black Willow | Salix nigra | quad | | | | X |
| 176 | 15" | Black Willow | Salix nigra | | | | | X |
| 177 | 9" | Common Apple | Malus pumila | twin | | | | X |
| 178 | 15" | Black Cherry | Prunus serotina | | | | | X |
| 179 | 12" | Black Cherry | Prunus serotina | | | | | X |
| 180 | 15" | Black Cherry | Prunus serotina | | | | | X |
| 181 | 14" | Black Cherry | Prunus serotina | | | | | X |
| 182 | 11" | Bur Oak | Quercus macrocarpa | | | | | X |
| 183 | 14" | Black Cherry | Prunus serotina | | | | | X |
| 184 | 10" | Black Cherry | Prunus serotina | | | | | X |
| 185 | 14" | Black Cherry | Prunus serotina | | | | | X |
| 186 | 12" | American Elm | Ulmus americana | | | | | X |
| 187 | 9" | American Elm | Ulmus americana | | | | | X |
| 188 | 12" | Black Cherry | Prunus serotina | | | | | X |
| 189 | 9" | Black Cherry | Prunus serotina | | | | | X |
| 190 | 10" | Black Cherry | Prunus serotina | | | | | X |
| 191 | 10" | Black Cherry | Prunus serotina | | | | | X |
| 192 | 9" | Black Pine | Pinus nigra | | | | | X |
| 193 | 12" | Sugar Maple | Acer saccharum | | | | | X |
| 194 | 12" | Black Cherry | Prunus serotina | | | | | X |
| 195 | 12" | Black Cherry | Prunus serotina | | | | | X |
| 196 | 8" | American Elm | Ulmus americana | | | | | X |
| 197 | 10" | American Elm | Ulmus americana | | | | | X |
| 198 | 9" | American Elm | Ulmus americana | | | | | X |
| 199 | 8" | American Elm | Ulmus americana | | | | | X |
| 200 | 11" | American Elm | Ulmus americana | | | | | X |
| 201 | 9" | Black Cherry | Prunus serotina | | | | | X |
| 202 | 10" | Black Cherry | Prunus serotina | | | | | X |
| 203 | 8" | Black Cherry | Prunus serotina | | | | | X |
| 204 | 9" | Black Cherry | Prunus serotina | | | | | X |
| 205 | 9" | Black Cherry | Prunus serotina | | | | | X |
| 206 | 15" | Black Cherry | Prunus serotina | | | | | X |
| 207 | 15" | Black Cherry | Prunus serotina | | | | | X |
| 208 | 11" | Red Oak | Quercus rubra | | | | | X |
| 209 | 9" | Black Cherry | Prunus serotina | | | | | X |
| 210 | 8" | Black Cherry | Prunus serotina | | | | | X |
| 211 | 8" | Black Cherry | Prunus serotina | | | | | X |
| 212 | 8" | Red | | | | | | |

M:\Civil\13d_Proj\12265\Area Plan\12265E01.dwg, 3/24/2023 10:10 AM, Candice M. Briers, 05 LEGAL DESCRIPTIONS, MCLC PDF, .pdf
Copyright © 2023, Midwestern Consulting L.L.C. All rights reserved. No part of this drawing may be used or reproduced in any form or by any means, or stored in a database or retrieval system, without prior permission of Midwestern Consulting L.L.C.

LEGAL DESCRIPTION

(PER AMERICAN TITLE COMPANY OF WASHTENAW, COMMITMENT NO. 115015,
COMMITMENT DATE: 06/22/2022)

PARCEL I:
Commencing at the North 1/4 corner of Section 7, Town 2 South, Range 7 East, Superior Township, Washtenaw County, Michigan; thence North 88°09'28" East 481.15 feet along the centerline of Warren Road; thence South 01°59'49" East 652.00 feet; thence South 02°49'01" East 606.58 feet to the POINT OF BEGINNING; thence South 75°36'30" West 84.81 feet; thence North 63°37'02" West 44.85 feet; thence North 28°47'56" West 175.86 feet; thence North 88°24'25" West 142.52 feet; thence North 87°08'25" West 622.90 feet; thence South 66°56'16" West 141.74 feet; thence 170.86 feet along the arc of a curve to the left with a radius of 150.00 feet and a chord which bears South 08°09'09" West 161.77 feet; thence South 24°19'30" East 228.93 feet; thence South 79°37'36" East 1,432.71 feet; thence North 02°49'01" West 386.11 feet to the POINT OF BEGINNING.

Parcel I is together with and subject to a non-exclusive easement for ingress, egress and public utility purposes described as follows:
Commencing at the Northwest corner of Section 7, Town 2 South, Range 7 East, Superior Township, Washtenaw County, Michigan; thence South 00°59'02" East 949.34 feet to the POINT OF BEGINNING; thence North 89°58'49" East 24.59 feet; thence 33.71 feet along the arc of a curve to the left with a radius of 167.00 feet and a chord which bears South 88°35'24" East 33.65 feet; thence North 78°25'36" East 51.94 feet; thence 155.05 feet along the arc of a curve to the right with a radius of 233.00 feet and a chord which bears South 82°30'33" East 152.21 feet; thence South 63°26'43" East 30.72 feet; thence 128.25 feet along the arc of a curve to the right with a radius of 133.00 feet and a chord which bears South 35°49'14" East 123.34 feet; thence South 08°11'46" East 80.56 feet; thence 143.82 feet along the arc of a curve to the left with a radius of 117.00 feet and a chord which bears South 43°24'35" East 134.93 feet; thence South 78°37'25" East 38.59 feet; thence 65.32 feet along the arc of a curve to the right with a radius of 183.00 feet and a chord which bears South 68°23'53" East 64.97 feet; thence South 58°10'21" East 95.89 feet; thence 155.18 feet along the arc of a curve to the left with a radius of 117.00 feet and a chord which bears North 83°49'53" East 144.05 feet; thence North 45°50'07" East 45.53 feet; thence 40.95 feet along the arc of a curve to the right with a radius of 133.00 feet and a chord which bears North 54°39'18" East 40.78 feet; thence South 24°19'30" East 33.03 feet; thence South 79°37'36" East 70.33 feet; thence 36.88 feet along the arc of a curve to the right with a radius of 121.00 feet and a chord which bears South 73°43'20" West 36.74 feet; thence 39.71 feet along the arc of a curve to the left with a radius of 67.00 feet and a chord which bears South 62°48'52" West 39.13 feet; thence South 45°50'07" West 45.53 feet; thence 242.72 feet along the arc of a curve to the right with a radius of 183.00 feet and a chord which bears South 83°49'53" West 225.31 feet; thence North 58°10'21" West 95.89 feet; thence 41.76 feet along the arc of a curve to the left with a radius of 117.00 feet and a chord which bears North 68°23'53" West 41.54 feet; thence North 78°37'25" West 38.59 feet; thence 224.94 feet along the arc of a curve to the right with a radius of 183.00 feet and a chord which bears North 43°24'35" West 211.05 feet; thence North 08°11'46" West 80.56 feet; thence 84.61 feet along the arc of a curve to the left with a radius of 67.00 feet and a chord which bears North 35°49'14" West 62.13 feet; thence North 63°26'43" West 30.72 feet; thence 111.13 feet along the arc of a curve to the left with a radius of 167.00 feet and a chord which bears North 82°30'33" West 109.09 feet; thence South 78°25'36" West 55.75 feet; thence 47.02 feet along the arc of a curve to the right with a radius of 233.00 feet and a chord which bears North 89°41'48" West 46.94 feet; thence South 89°58'49" West 19.67 feet; thence North 00°59'02" West 66.00 feet to the POINT OF BEGINNING.

PARCEL II:
Commencing at the Northwest corner of Section 7, Town 2 South, Range 7 East, Superior Township, Washtenaw County, Michigan; thence South 00°59'02" East 449.29 feet; thence North 89°40'15" East 575.11 feet to the POINT OF BEGINNING; thence South 25°32'08" East 530.06 feet; thence North 66°56'16" East 141.74 feet; thence North 87°08'25" East 622.90 feet; thence North 09°20'43" West 230.33 feet; thence South 89°08'28" West 103.71 feet; thence North 22°14'32" West 220.57 feet; thence North 42°43'10" West 322.72 feet; thence North 89°02'44" West 96.09 feet; thence South 47°33'36" West 409.14 feet; thence South 89°40'15" West 139.49 feet to the POINT OF BEGINNING.

PARCEL III:
Commencing at the Northwest corners of Section 7, Town 2 South, Range 7 East, Superior Township, Washtenaw County, Michigan; thence South 00°59'02" East 449.29 feet to the POINT OF BEGINNING; thence North 89°40'15" East 575.11 feet; thence South 25°32'08" East 530.06 feet; thence 170.86 feet along the arc of a curve to the left with a radius of 150.00 feet and a chord which bears South 08°09'09" West 161.77 feet; thence South 24°19'30" East 43.64 feet; thence North 85°20'39" West 342.12 feet; thence South 00°40'22" East 186.56 feet; thence 178.07 feet along the arc of a curve to the right with a radius of 150.00 feet and a chord which bears North 42°12'18" West 167.80 feet; thence North 08°11'46" West 80.56 feet; thence 96.43 feet along the arc of a curve to the left with a radius of 100.00 feet and a chord which bears North 35°49'14" West 92.74 feet; thence North 63°26'43" West 30.72 feet; thence 133.09 feet along the arc of a curve to the left with a radius of 200.00 feet and a chord which bears North 82°30'33" West 130.65 feet; thence South 78°25'36" West 53.92 feet; thence 41.87 feet along the arc of a curve to the right with a radius of 200.00 feet and a chord which bears North 89°14'28" West 41.80 feet; thence South 89°58'49" West 22.05 feet; thence North 00°59'02" West 533.66 feet to the POINT OF BEGINNING.

PARCEL IV:
Commencing at the Northwest corners of Section 7, Town 2 South, Range 7 East, Superior Township, Washtenaw County, Michigan; thence South 00°59'02" East 982.34 feet to the POINT OF BEGINNING; thence North 89°58'49" East 22.05 feet; thence 41.87 feet along the arc of a curve to the left with a radius of 200.00 feet and a chord which bears South 89°14'28" East 41.80 feet; thence North 78°25'36" East 53.92 feet; thence 133.09 feet along the arc of a curve to the right with a radius of 200.00 feet and a chord which bears South 82°30'33" East 130.65 feet; thence South 63°26'43" East 30.72 feet; thence 96.43 feet along the arc of a curve to the right with a radius of 100.00 feet and a chord which bears South 35°49'14" East 92.47 feet; thence South 08°11'46" East 80.56 feet; thence 178.07 feet along the arc of a curve to the left with a radius of 150.00 feet and a chord which bears South 42°12'18" East 167.80 feet; thence North 00°40'22" West 186.56 feet; thence South 85°20'39" East 342.12 feet; thence South 24°19'30" East 185.29 feet; thence 29.52 feet along the arc of a curve to the left with a radius of 100.00 feet and a chord which bears South 54°17'30" West 29.41 feet; thence South 45°50'07" West 45.53 feet; thence 45.44 feet along the arc of a curve to the right with a radius of 150.00 feet and a chord which bears South 54°30'48" West 45.27 feet; thence South 16°42'39" West 559.67 feet; thence North 48°59'02" West 360.35 feet; thence South 89°00'58" West 110.00 feet; thence North 44°00'48" West 319.99 feet; thence North 00°59'02" West 456.39 feet to the POINT OF BEGINNING.

PARCEL V:
Commencing at the Northwest corners of Section 7, Town 2 South, Range 7 East, Superior Township, Washtenaw County, Michigan; thence South 00°59'02" East 1,438.73 feet to the POINT OF BEGINNING; thence South 44°00'58" East 319.99 feet; thence North 89°00'58" East 110.00 feet; thence South 48°59'02" East 360.35 feet to the POINT OF BEGINNING; thence North 16°42'39" East 559.67 feet; thence 45.44 feet along the arc of a curve to the left with a radius of 150.00 feet and a chord which bears North 54°30'48" East 45.27 feet; thence North 45°50'07" East 45.53 feet; thence 29.52 feet along the arc of a curve to the right with a radius 100.00 feet and a chord which bears North 54°17'30" East 29.41 feet; thence South 79°37'36" East 407.50 feet; thence South 04°56'00" West 876.71 feet; thence North 70°37'31" West 341.00 feet; thence North 48°59'02" West 339.65 feet to the POINT OF BEGINNING.

PARCEL VI:
Commencing at the North 1/4 corner of Section 7, Town 2 South, Range 7 East, Superior Township, Washtenaw County, Michigan; thence North 88°09'28" East 481.15 feet along the centerline of Warren Road; thence South 01°58'49" East 652.00 feet; thence South 02°49'01" East 1,710.09 feet; thence South 88°57'38" West 563.16 feet to the POINT OF BEGINNING; thence North 02°49'01" West 831.70 feet; thence North 79°37'36" West 448.29 feet; thence South 04°56'00" West 876.71 feet; thence North 70°37'31" East 137.31 feet; thence North 88°57'38" East 427.78 feet to the POINT OF BEGINNING.

PARCEL VII:
Commencing at the North 1/4 corner of Section 7, Town 2 South, Range 7 East, Superior Township, Washtenaw County, Michigan; thence North 88°09'28" East 481.15 feet along the centerline of Warren Road; thence South 01°59'49" East 652.00 feet; thence South 02°49'01" East 992.69 feet to the POINT OF BEGINNING; thence North 79°37'36" West 578.10 feet; thence South 02°49'01" East 831.70 feet; thence North 88°57'38" East 563.16 feet; thence North 02°49'01" West 717.40 feet to the POINT OF BEGINNING.

PARCEL VII described for tax purposes as:
Commencing at the Northwest corner of Section 7; thence South 00°59'02" East 1,438.73 feet; thence South 44°00'58" East 319.99 feet; thence North 89°00'58" East 110.00 feet; thence South 48°59'02" East 700.00 feet; thence South 70°37'31" East 478.31 feet; thence North 88°57'38" East 427.78 feet to the POINT OF BEGINNING; thence continuing North 88°57'38" East 563.16 feet; thence North 02°49'01" West 717.40 feet; thence North 79°37'36" West 578.10 feet; thence South 02°49'01" East 831.70 feet to the POINT OF BEGINNING. Part of the Northwest 1/4 of Section 7, Town 2 South, Range 7 East.

OVERALL LEGAL DESCRIPTION

Commencing at the N.W. corner of fractional Section 7, T2S, R7E, Superior Township, Washtenaw County, Michigan, thence S 00° 59' 02" E 448.68 feet along the west line of said Section 7 and the center line of Dixboro Road to the POINT OF BEGINNING,
thence N 89° 40' 15" E 714.60 feet,
thence N 47° 33' 36" E 409.14 feet,
thence S 89° 02' 44" E 96.09 feet,
thence S 42° 43' 10" E 322.72 feet,
thence S 22° 14' 32" E 220.57 feet,
thence N 89° 08' 28" E 103.71 feet,
thence S 9° 20' 43" E 230.33 feet,
thence N 88° 24' 25" E 142.52 feet,
thence S 28° 47' 56" E 175.86 feet,
thence S 63° 37' 02" E 446.72 feet,
thence N 75° 36' 30" E 84.41 feet,
thence S 2° 49' 01" E 1103.51 feet,
thence along the northerly right of way line of M-14 expressway in the following five (5) courses:
S 88° 57' 38" W 990.94 feet,
N 70° 37' 31" W 478.31 feet,
N 48° 57' 02" W 700.00 feet,
S 89° 00' 58" W 110.00 feet,
N 44° 00' 58" W 320.00 feet,
thence N 00° 59' 02" W 990.05 feet along the west line of said Section 7 and the center line of Dixboro Road to the POINT OF BEGINNING, being a part of the N 1/2 if said Section 7, T2S, R7E, Superior Township, Washtenaw County, Michigan, containing 76.97 acre of land more or less, subject to the rights of the public over the west 33.00 feet thereof as occupied by Dixboro Road, subject to easements or restrictions of record, if any.

The underground utilities shown have been located from field survey information and existing records. The surveyor makes no guarantees that the underground utilities shown comprise all such utilities in the area, either in-service or abandoned. The surveyor further does not warrant that the underground utilities shown are in the exact location indicated. Although the surveyor does certify that they are located as accurately as possible from the information available.

M I D W E S T E R N
C O N S U L T I N G
385 Plaza Drive Ann Arbor, Michigan 48108
(734) 995-0200 • www.midwesternconsulting.com
Land Development • Land Survey • Institutional • Municipal
Wireless Communications • Transportation • Landfill Services



CLIENT
GARRETT'S SPACE
1400 GRANGER AVENUE
ANN ARBOR, MI 48104
SCOTT HALPERT
(734) - 709 - 7684

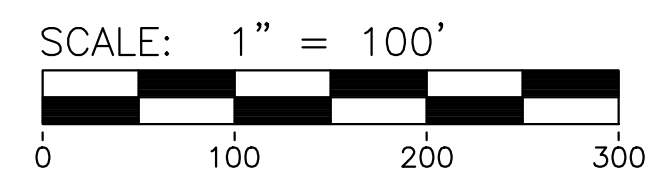
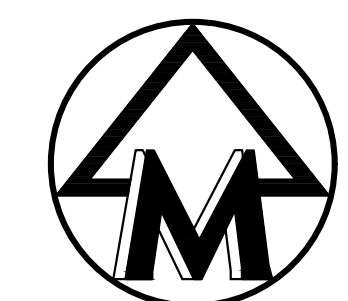
GARRETT'S SPACE
LEGAL DESCRIPTIONS

05

| | | |
|------------------|--------------|------------|
| DATE: 03/24/2023 | REV. DATE: | REVISIONS: |
| SHEET 05 OF 15 | CADD: CAR | |
| ENG: TPH | PM: TJC | |
| TECH: TJC | TECH: TJC | |
| FILE: 05.dwg | FILE: 05.dwg | |

JOB No. **22265**

M:\Civ\134_Proj\22265\Area Plans\22265RM1.dwg, 3/24/2023 10:10 AM, Candice M. Briere, 06 OVERALL REMOVALS PLAN, MCLLC PDF, .pdf
Copyright © 2023, Midwestern Consulting L.L.C. All rights reserved. No part of this drawing may be used or reproduced in any form or by any means, or stored in a database or retrieval system, without prior permission of Midwestern Consulting L.L.C.



LEGEND

- 838 ——— EXIST. CONTOUR
- x836.2 EXIST. SPOT ELEVATION
- o U.P. EXIST. UTILITY POLE
- GUY WIRE
- OH ——— EXIST. OVERHEAD UTILITY LINE
- EXIST. STORM SEWER
- EXIST. CATCH BASIN OR INLET CULVERT
- - - - - EXIST. SANITARY SEWER
- o catv EXIST. CLEANOUT CABLE TELEVISION RISER
- o SINGLE TREE
- o WELL
- [Cross-hatched box] STRUCTURE TO BE REMOVED
- [Diagonal lines box] BITUMINOUS TO BE REMOVED
- [Solid black box] LANDSCAPE TO BE REMOVED
- //// //// UTILITY TO BE REMOVED
- XXXXXXXXXXXXXXXX SITE FEATURE TO BE REMOVED
- X TREE TO BE REMOVED
- (REM) ITEM TO BE REMOVED

NOTES

1. ALL UNDERGROUND UTILITIES AND STRUCTURES HAVE BEEN SHOWN TO A REASONABLE DEGREE OF ACCURACY AND IT SHALL BE THE CONTRACTOR'S RESPONSIBILITY TO VERIFY THEIR EXACT LOCATION AND TO AVOID DAMAGE THERETO. THE CONTRACTOR SHALL REPORT ANY DISCREPANCIES TO THE ENGINEER PRIOR TO COMMENCING WORK.
2. THE CONTRACTOR SHALL BE RESPONSIBLE FOR DEMOLISHING OR RELOCATING ANY SITE FEATURES ACCORDING TO PLAN OR AS APPROPRIATE TO FACILITATE CONSTRUCTION OF THE PROPOSED IMPROVEMENTS.
3. ANY ITEM NOT INDICATED FOR REMOVAL SHALL REMAIN AND BE PROTECTED BY THE CONTRACTOR DURING ALL PHASES OF CONSTRUCTION. ANY SUCH ITEM THAT IS REMOVED AND/OR DAMAGED DURING CONSTRUCTION SHALL BE REPAIRED OR REPLACED TO THE REQUIRED STANDARD AT THE CONTRACTOR'S EXPENSE.
4. ALL CONCRETE AND ASPHALT PAVEMENT TO BE REMOVED SHALL BE SAW CUT TO THE FULL DEPTH OF PAVEMENT. THE CONTRACTOR SHALL TAKE CARE TO MAINTAIN A CLEAN EDGE OF PAVEMENT.
5. PRIOR TO REMOVING, RELOCATING, OR PERFORMING ANY WORK ON A UTILITY, THE CONTRACTOR SHALL COORDINATE WITH THE RESPECTIVE UTILITY OWNER.
6. REMOVAL OF EXISTING LANDSCAPING SHALL INCLUDE STUMPS.
7. ALL DEMOLISHED MATERIAL SHALL BE REMOVED FROM THE SITE AND DISPOSED OF IN LEGALLY DESIGNATED DISPOSAL AREA.
8. ALL WORK SHALL COMPLY WITH CURRENT SUPERIOR TOWNSHIP STANDARDS.

The underground utilities shown have been located from field survey information and existing records. The surveyor makes no guarantees that the underground utilities shown comprise all such utilities in the area, either in-service or abandoned. The surveyor further does not warrant that the underground utilities shown are in the exact location indicated. Although the surveyor does certify that they are located as accurately as possible from the information available.

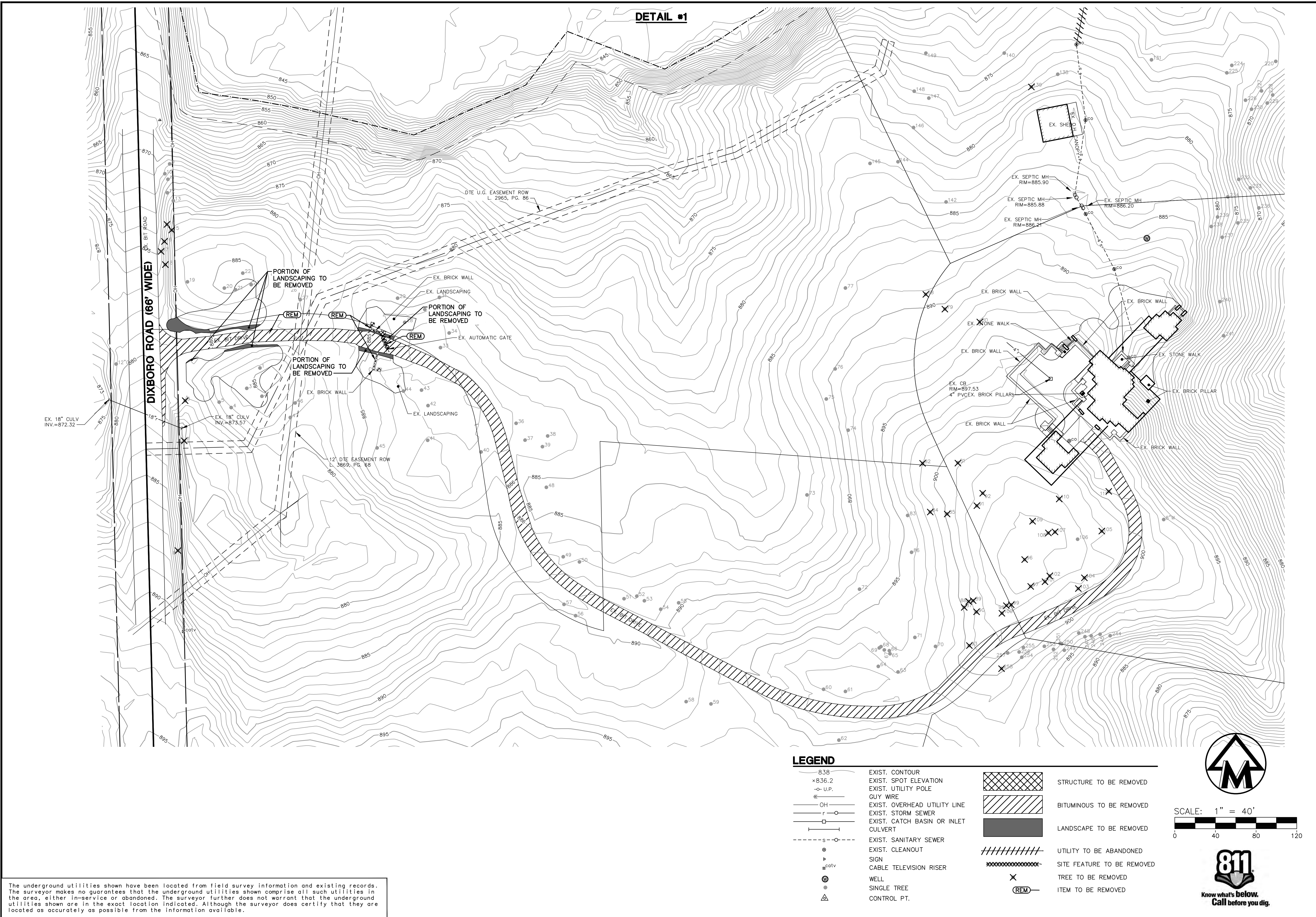
MIDWESTERN CONSULTING
3835 Plaza Drive Ann Arbor, Michigan 48108
(734) 995-0200 • www.midwesternconsulting.com
Land Development • Land Survey • Institutional • Municipal
Wireless Communications • Transportation • Landfill Services

CLIENT
GARRETT'S SPACE
1400 GRANGER AVENUE
ANN ARBOR, MI 48104
SCOTT HALPERT
(734) - 709 - 7684

GARRETT'S SPACE
OVERALL REMOVALS PLAN

06

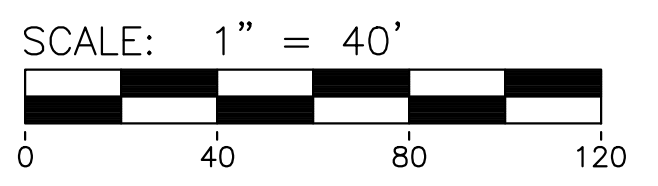
| | |
|----------------------|------------------|
| JOB No. 22265 | DATE: 03/24/2023 |
| REVISIONS: | SHEET 06 OF 15 |
| | CADD: CAR |
| | ENG: TPH |
| | PK: TJC |
| | TECH: SMM |
| | FILE: 008 |



DETAIL #1

LEGEND

- | | | | |
|----------|-------------------------------------|-------|----------------------------|
| 838 | EXIST. CONTOUR | | STRUCTURE TO BE REMOVED |
| x836.2 | EXIST. SPOT ELEVATION | | BITUMINOUS TO BE REMOVED |
| -o- U.P. | EXIST. UTILITY POLE | | LANDSCAPE TO BE REMOVED |
| ⊕ | QUY WIRE | | UTILITY TO BE ABANDONED |
| OH | EXIST. OVERHEAD UTILITY LINE | | SITE FEATURE TO BE REMOVED |
| r | EXIST. STORM SEWER | X | TREE TO BE REMOVED |
| —o— | EXIST. CATCH BASIN OR INLET CULVERT | (REM) | ITEM TO BE REMOVED |
| —s—o— | EXIST. SANITARY SEWER | | |
| ⊙ | EXIST. CLEANOUT | | |
| ⊕ | SIGN | | |
| ⊕ | CABLE TELEVISION RISER | | |
| ⊕ | WELL | | |
| ⊕ | SINGLE TREE | | |
| ⊕ | CONTROL PT. | | |



The underground utilities shown have been located from field survey information and existing records. The surveyor makes no guarantees that the underground utilities shown comprise all such utilities in the area, either in-service or abandoned. The surveyor further does not warrant that the underground utilities shown are in the exact location indicated. Although the surveyor does certify that they are located as accurately as possible from the information available.

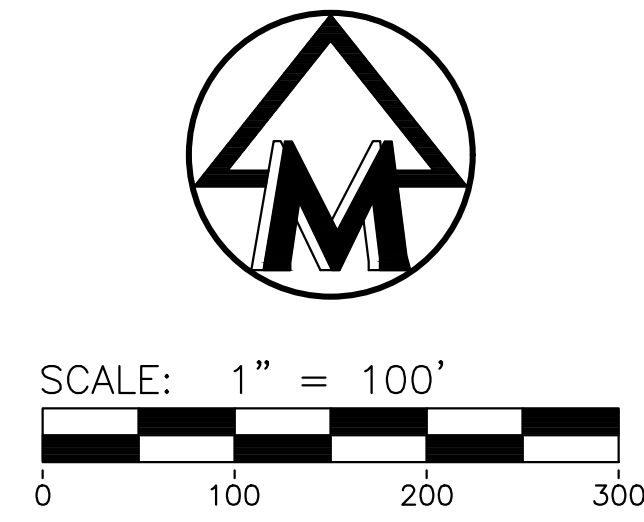
| | | |
|--|--|---|
| <p>MIDWESTERN CONSULTING 3815 Plaza Drive Ann Arbor, Michigan 48108 (734) 995-0200 • www.midwesternconsulting.com Land Development • Land Survey • Institutional • Municipal Wireless Communications • Transportation • Landfill Services</p> | | <p>CLIENT GARRETT'S SPACE 1400 GRANGER AVENUE ANN ARBOR, MI 48104 SCOTT HALPERT (734) 709-7684</p> |
| | | <p>JOB No. 22265</p> |
| <p>DATE: 03/24/2023 SHEET 07 OF 15</p> | <p>REV. DATE CADD: CAR ENG: TPH PM: TJC TECH: SML FILE: 008</p> | <p>07</p> |
| <p>GARRETT'S SPACE ENLARGED REMOVAL PLAN</p> | | |

M:\CIVIL\130_Proj\122265\Area Plans\22265PH1.dwg, 3/24/2023 10:10 AM, Candice M. Briere, 08 PHASING PLAN, MLLC PDF.p03
 Copyright © 2023, Midwestern Consulting L.L.C. All rights reserved. No part of this drawing may be used or reproduced in any form or by any means, or stored in a database or retrieval system, without prior permission of Midwestern Consulting L.L.C.

DIXBORO ROAD (66' WIDE)



The underground utilities shown have been located from field survey information and existing records. The surveyor makes no guarantees that the underground utilities shown comprise all such utilities in the area, either in-service or abandoned. The surveyor further does not warrant that the underground utilities shown are in the exact location indicated. Although the surveyor does certify that they are located as accurately as possible from the information available.



LEGEND

| | |
|--|------------|
| | PHASE LINE |
| | PHASE 1 |
| | PHASE 2 |

| | |
|------------|--------------|
| JOB No. | 22265 |
| REVISIONS: | |
| DATE: | 03/24/2023 |
| SHEET | 08 OF 15 |
| CADD: | CAR |
| ENG.: | TPH |
| P.M.: | TJC |
| TECH.: | SMH |
| FILE: | 22265PH1.dwg |
| DATE: | 03/24/2023 |

08

GARRETT'S SPACE

PHASING PLAN

CLIENT
 GARRETT'S SPACE
 1400 GRANGER AVENUE
 ANN ARBOR, MI 48104
 SCOTT HALPERT
 (734) 709-7684

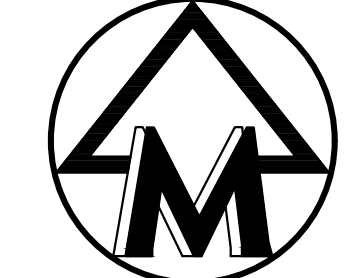
MIDWESTERN CONSULTING
 3815 Plaza Drive Ann Arbor, Michigan 48108
 (734) 995-0200 • www.midwesternconsulting.com
 Land Development • Land Survey • Institutional • Municipal
 Wireless Communications • Transportation • Landfill Services

M:\CIVIL\130_Proj\12265\Area Plans\226591.dwg, 3/24/2023 10:10 AM, Candice M. Briere, 09 DIMENSIONAL LAYOUT PLAN, MCLC PDF.dwg
Copyright © 2023, Midwestern Consulting L.L.C. All rights reserved. No part of this drawing may be used or reproduced in any form or by any means, or stored in a database or retrieval system, without prior permission of Midwestern Consulting L.L.C.

DIXBORO ROAD (66' WIDE)



The underground utilities shown have been located from field survey information and existing records. The surveyor makes no guarantees that the underground utilities shown comprise all such utilities in the area, either in-service or abandoned. The surveyor further does not warrant that the underground utilities shown are in the exact location indicated. Although the surveyor does certify that they are located as accurately as possible from the information available.



SCALE: 1" = 100'
0 100 200 300



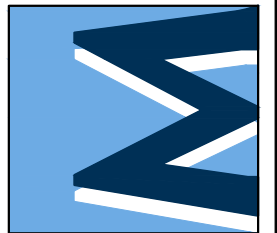
NOTES

1. ALL WORK SHALL BE COMPLETED IN ACCORDANCE WITH CURRENT STANDARDS, SPECIFICATIONS, AND GENERAL CONDITIONS OF THE AUTHORITY HAVING JURISDICTION.
2. REFER TO THE ARCHITECTURAL PLANS FOR DETAILS REGARDING THE SCOPE OF WORK FOR THE BUILDING ELEVATIONS, INTERIORS, AND APPURTENANCES.
3. ALL DIMENSIONS ARE MEASURED TO THE PAINT LINE OR FACE OF CURB UNLESS OTHERWISE NOTED.
4. THE CONTRACTOR SHALL CONTACT THE OWNER AND/OR ENGINEER PRIOR TO COMMENCING WORK SHOULD THERE BE ANY FIELD CONFLICTS WITH THE DESIGN INTENT.

LEGEND

- NUMBER OF STANDARD PARKING SPACES IN ROW
- NUMBER OF BARRIER FREE PARKING SPACES IN ROW
- BF BARRIER FREE PARKING SIGN
- PROP. CURB & GUTTER
- PROP. BITUMINOUS PAVEMENT
- ▨ PROP. CONCRETE PAVEMENT
- ⬮ SIGN
- ⬮ PROP. SINGLE LIGHT
- PROP. WALKING TRAIL

MIDWESTERN CONSULTING
3855 Plaza Drive Ann Arbor, Michigan 48108
(734) 995-0200 • www.midwesternconsulting.com
Land Development • Land Survey • Institutional • Municipal
Wireless Communications • Transportation • Landfill Services



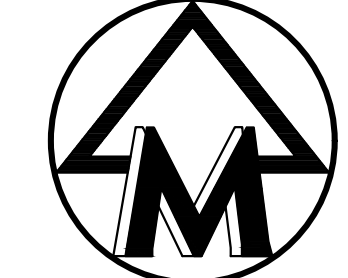
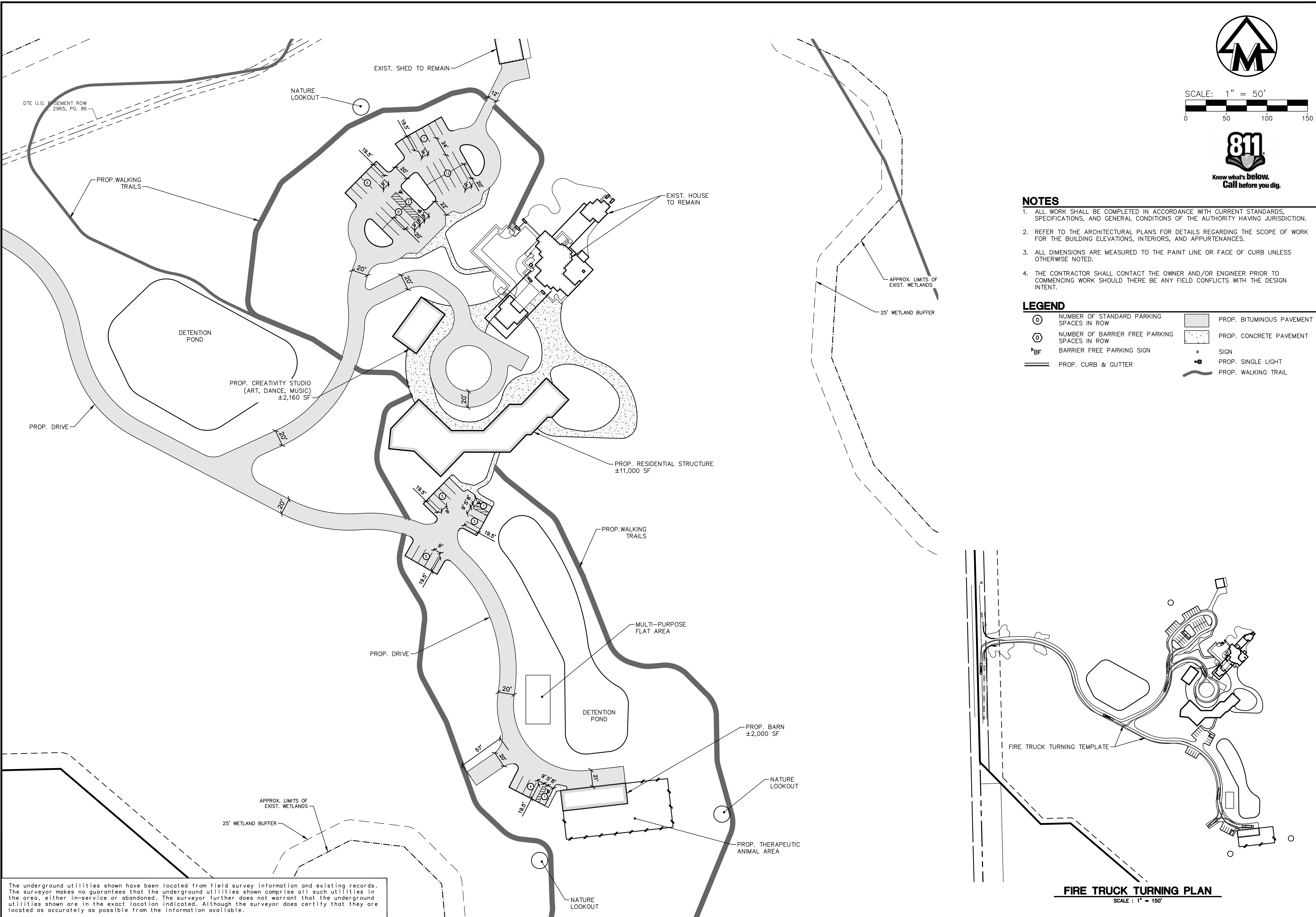
CLIENT
GARRETT'S SPACE
1400 GRANGER AVENUE
ANN ARBOR, MI 48104
SCOTT HALPERT
(734) 709-7684

GARRETT'S SPACE
DIMENSIONAL LAYOUT PLAN

09

| | |
|---------|------------|
| JOB No. | 22265 |
| DATE | 03/24/2023 |
| SHEET | 09 OF 15 |
| REV. | DATE |
| CADD | CIS/CAR |
| ENG. | TPH |
| PM. | TJC |
| TECH. | SEB/dwg |
| DATE | 03/24/2023 |

M:\CIVIL\130_Proj\122665\Area Plans\226651.dwg, 3/24/2023 10:10 AM, Candice M. Briere, 10 ENLARGED LAYOUT PLAN, MLLC PDF.p3
Copyright © 2023, Midwestern Consulting L.L.C. All rights reserved. No part of this drawing may be used or reproduced in any form or by any means, or stored in a database or retrieval system, without prior permission of Midwestern Consulting L.L.C.



SCALE: 1" = 50'
0 50 100 150



NOTES

1. ALL WORK SHALL BE COMPLETED IN ACCORDANCE WITH CURRENT STANDARDS, SPECIFICATIONS, AND GENERAL CONDITIONS OF THE AUTHORITY HAVING JURISDICTION.
2. REFER TO THE ARCHITECTURAL PLANS FOR DETAILS REGARDING THE SCOPE OF WORK FOR THE BUILDING ELEVATIONS, INTERIORS, AND APPURTENANCES.
3. ALL DIMENSIONS ARE MEASURED TO THE PAINT LINE OR FACE OF CURB UNLESS OTHERWISE NOTED.
4. THE CONTRACTOR SHALL CONTACT THE OWNER AND/OR ENGINEER PRIOR TO COMMENCING WORK SHOULD THERE BE ANY FIELD CONFLICTS WITH THE DESIGN INTENT.

LEGEND

- | | | | |
|----|--|---|---------------------------|
| ⊙ | NUMBER OF STANDARD PARKING SPACES IN ROW | ▨ | PROP. BITUMINOUS PAVEMENT |
| ⊕ | NUMBER OF BARRIER FREE PARKING SPACES IN ROW | ▩ | PROP. CONCRETE PAVEMENT |
| BF | BARRIER FREE PARKING SIGN | ⬮ | SIGN |
| — | PROP. CURB & GUTTER | ⬮ | PROP. SINGLE LIGHT |
| | | — | PROP. WALKING TRAIL |

MIDWESTERN CONSULTING
 3815 Plaza Drive Ann Arbor, Michigan 48108
 (734) 995-0200 • www.midwesternconsulting.com
 Land Development • Land Survey • Institutional • Municipal
 Wireless Communications • Transportation • Landfill Services

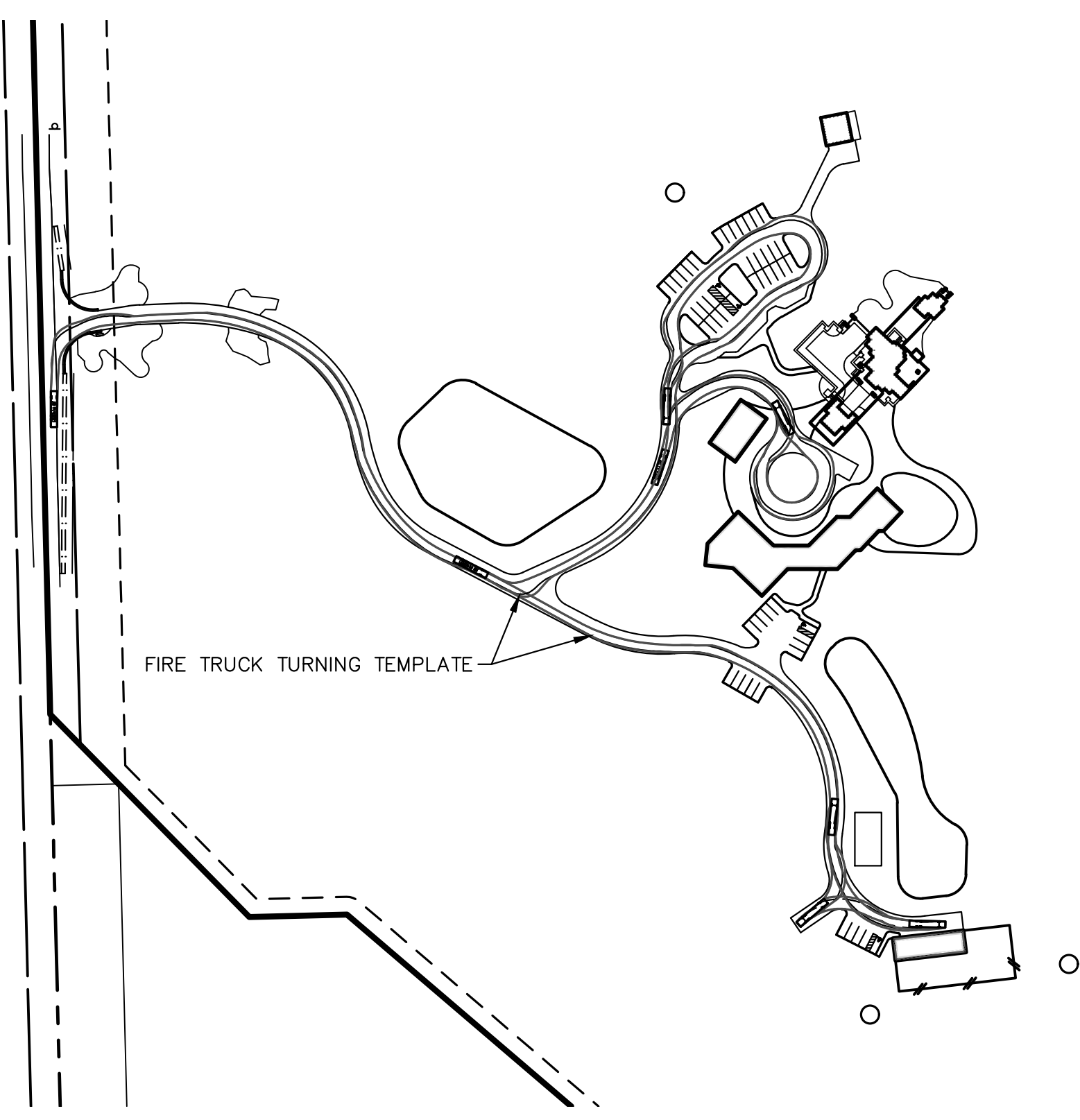
CLIENT
 GARRETT'S SPACE
 1400 GRANGER AVENUE
 ANN ARBOR, MI 48104
 SCOTT HALPERT
 (734) 709-7684

GARRETT'S SPACE
 ENLARGED LAYOUT PLAN

10

DATE: 03/24/2023
 SHEET 10 OF 15
 CADD: CAR
 ENG: TPH
 PM: TJC
 TECH: SEB/AMG
 F381038

22265
 JOB No.
 REVISIONS:



FIRE TRUCK TURNING PLAN

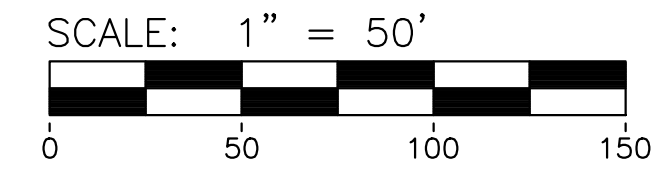
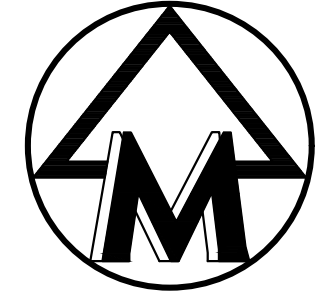
SCALE: 1" = 150'

The underground utilities shown have been located from field survey information and existing records. The surveyor makes no guarantees that the underground utilities shown comprise all such utilities in the area, either in-service or abandoned. The surveyor further does not warrant that the underground utilities shown are in the exact location indicated. Although the surveyor does certify that they are located as accurately as possible from the information available.

M:\Civ\134_Proj\12265\Free Plan\1226501.dwg, 3/24/2023 10:11 AM, Candice M. Briere, 12 CUT & FILL ANALYSIS & STORMWATER ANALYSIS, MLLC PDF.pc3
 Copyright © 2023, Midwestern Consulting L.L.C. All rights reserved. No part of this drawing may be used or reproduced in any form or by any means, or stored in a database or retrieval system, without prior permission of Midwestern Consulting L.L.C.



The underground utilities shown have been located from field survey information and existing records. The surveyor makes no guarantees that the underground utilities shown comprise all such utilities in the area, either in-service or abandoned. The surveyor further does not warrant that the underground utilities shown are in the exact location indicated. Although the surveyor does certify that they are located as accurately as possible from the information available.



Know what's below.
Call before you dig.

LEGEND

- EXIST. CONTOUR
- PROP. CUT AREA
- PROP. FILL AREA
- LIMITS OF DISTURBANCE
- LIMITS OF CUT/FILL

JOB NO. **22265**

| REV. | DATE | BY | DESCRIPTION |
|------|------|----|-------------|
| | | | |

DATE: 03/24/2023
 SHEET 12 OF 15
 CADD: CAR
 ENG: TPH
 PM: TJC
 TECH: GBT.dwg
 FSB: 1058

GARRETT'S SPACE
 CUT & FILL ANALYSIS & STORMWATER ANALYSIS

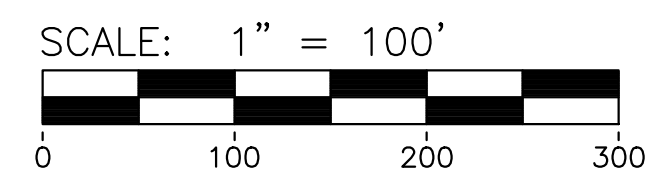
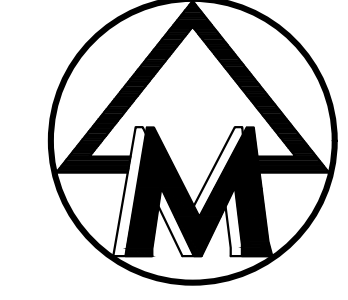
CLIENT
 GARRETT'S SPACE
 1400 GRANGER AVENUE
 ANN ARBOR, MI 48104
 SCOTT HALPERT
 (734) 709-7684



MIDWESTERN CONSULTING
 3815 Plaza Drive Ann Arbor, Michigan 48108
 (734) 995-0200 • www.midwesternconsulting.com
 Land Development • Land Survey • Institutional • Municipal
 Wireless Communications • Transportation • Landfill Services

M:\CIVIL\13_P\132265\Area Plans\22265\1.dwg, 3/24/2023 10:11 AM, Candice M. Briere, 13 CONCEPTUAL UTILITY PLAN, MCLC PDF.p63
 Copyright © 2023, Midwestern Consulting L.L.C. All rights reserved. No part of this drawing may be used or reproduced in any form or by any means, or stored in a database or retrieval system, without prior permission of Midwestern Consulting L.L.C.

DIXBORO ROAD (66' WIDE)



| LEGEND | |
|--------|-----------------------------------|
| 838 | EXIST. CONTOUR |
| U.P. | EXIST. UTILITY POLE |
| U.P. | EXIST. UTILITY POLE W/ TRANS. |
| — | GUY WIRE |
| ⊠ | ELEC. TRANSFORMER |
| ⊠ | EXIST. AC UNIT |
| ⊠ | EXIST. GENERATOR |
| OH | EXIST. OVERHEAD UTILITY LINE |
| * | EXIST. LIGHT POLE |
| t | PROP. LIGHT POLE |
| e | EXIST. TELEPHONE LINE |
| g | EXIST. ELECTRIC LINE |
| g | EXIST. GAS LINE |
| f.o. | EXIST. GAS VALVE |
| w | EXIST. FIBER OPTIC LINE |
| W | EXIST. WATER MAIN |
| W | PROP. WATER MAIN |
| ⊕ | EXIST. HYDRANT |
| ⊕ | PROP. HYDRANT |
| ⊕ | EXIST. GATE VALVE IN BOX |
| ⊕ | PROP. GATE VALVE IN BOX |
| ⊕ | EXIST. GATE VALVE IN WELL |
| ⊕ | PROP. GATE VALVE IN WELL |
| ⊕ | EXIST. CURB STOP & BOX |
| ⊕ | PROP. CURB STOP & BOX |
| ⊕ | REDUCER |
| ⊕ | EXIST. BLOW-OFF |
| ⊕ | PROP. BLOW-OFF |
| ⊕ | POST INDICATOR VALVE |
| ⊕ | POST INDICATOR VALVE |
| ⊕ | THRUST BLOCK |
| ⊕ | PROP. KNOXBOX |
| ⊕ | EXIST. FIRE DEPARTMENT CONNECTION |
| ⊕ | PROP. FIRE DEPARTMENT CONNECTION |
| ⊕ | EXIST. STORM SEWER |
| ⊕ | PROP. STORM SEWER |
| ⊕ | EXIST. CATCH BASIN OR INLET |
| ⊕ | PROP. CATCH BASIN OR INLET |
| ⊕ | EXIST. BEEHIVE INLET |
| ⊕ | PROP. BEEHIVE INLET |
| ⊕ | PROP. ROOF DRAIN |
| ⊕ | END SECTION |
| ⊕ | HEAD WALL |
| ⊕ | CULVERT |
| ⊕ | EXIST. DOWNSPOUT |
| ⊕ | PROP. DOWNSPOUT |
| ⊕ | EXIST. SANITARY SEWER |
| ⊕ | PROP. SANITARY SEWER |
| ⊕ | EXIST. CLEANOUT |
| ⊕ | PROP. CLEANOUT |
| ⊕ | C/L OF DITCH |
| ⊕ | SINGLE TREE |
| ⊕ | LIMITS OF DISTURBANCE |
| ⊕ | SOIL BORING |
| ⊕ | TPOX |

The underground utilities shown have been located from field survey information and existing records. The surveyor makes no guarantees that the underground utilities shown comprise all such utilities in the area, either in-service or abandoned. The surveyor further does not warrant that the underground utilities shown are in the exact location indicated. Although the surveyor does certify that they are located as accurately as possible from the information available.

MIDWESTERN CONSULTING
 3815 Plaza Drive Ann Arbor, Michigan 48108
 (734) 995-0200 • www.midwesternconsulting.com
 Land Development • Land Survey • Institutional • Municipal
 Wireless Communications • Transportation • Landfill Services

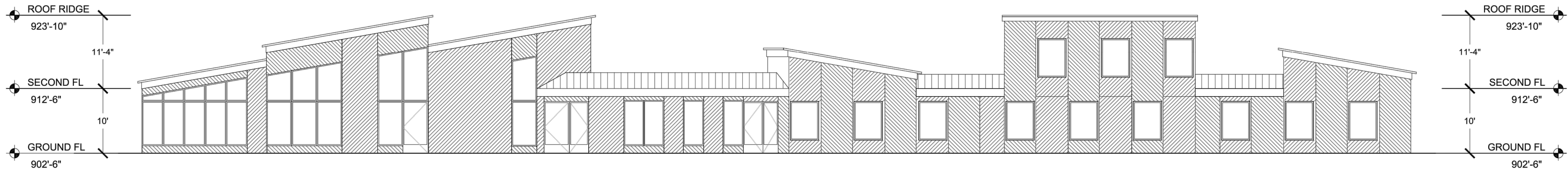
CLIENT
 GARRETT'S SPACE
 1400 GRANGER AVENUE
 ANN ARBOR, MI 48104
 SCOTT HALPERT
 (734) - 709 - 7684

GARRETT'S SPACE
 CONCEPTUAL UTILITY PLAN

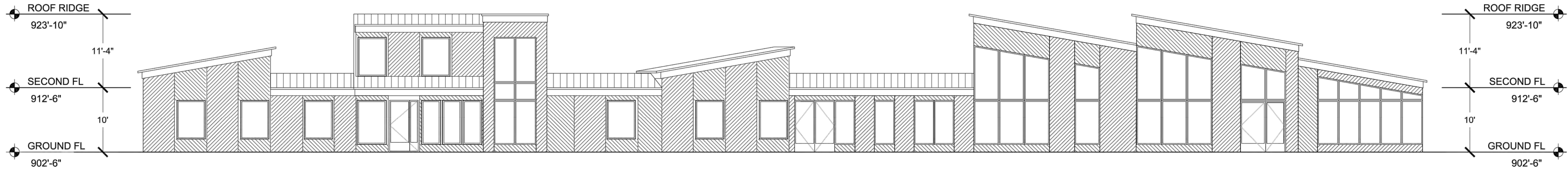
13

| | |
|------------|------------|
| JOB No. | 22265 |
| DATE: | 03/24/2023 |
| REV. DATE: | |
| SHEET | 13 OF 15 |
| CADD: | CAR |
| ENG.: | TPH |
| PK.: | TJC |
| TECH.: | MBT |
| DATE: | 03/24/2023 |
| FILE: | 13.dwg |

| Revisions | | | |
|-----------|------|-------------|----|
| NO. | DATE | DESCRIPTION | BY |
| | | | |
| | | | |
| | | | |
| | | | |
| | | | |
| | | | |
| | | | |
| | | | |
| | | | |
| | | | |



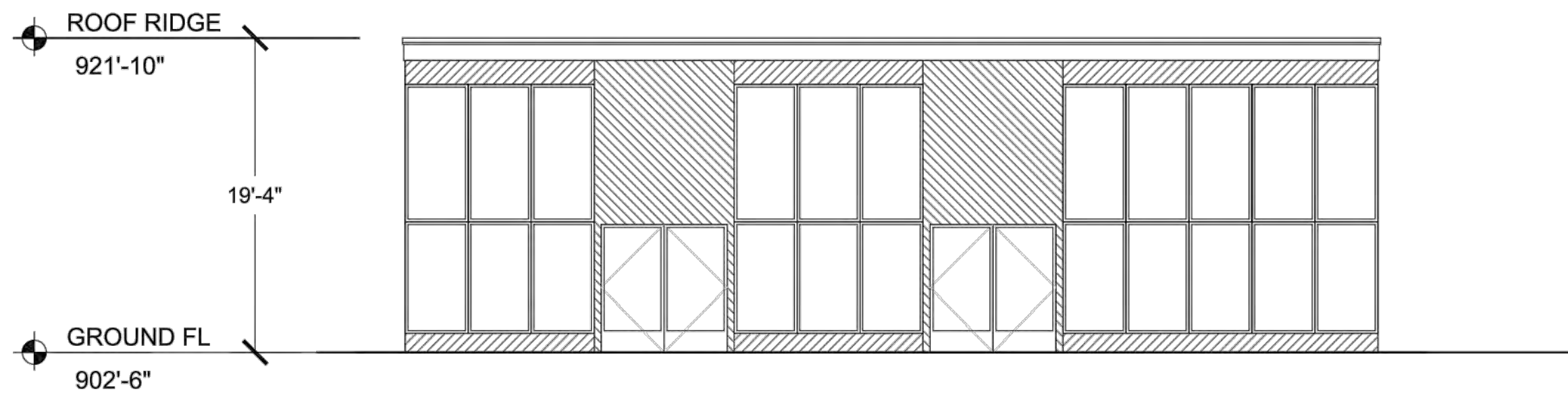
6 RESIDENCE SOUTH ELEVATION
1/8" = 1'



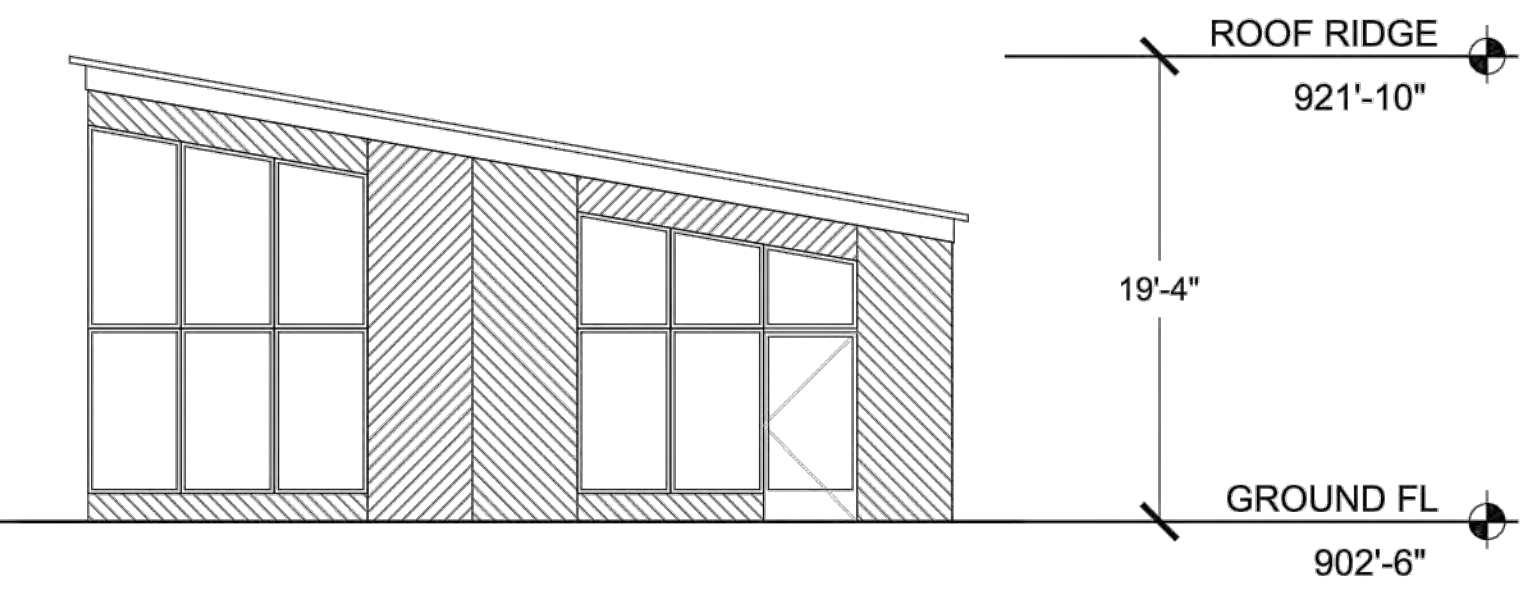
5 RESIDENCE NORTH ELEVATION
1/8" = 1'



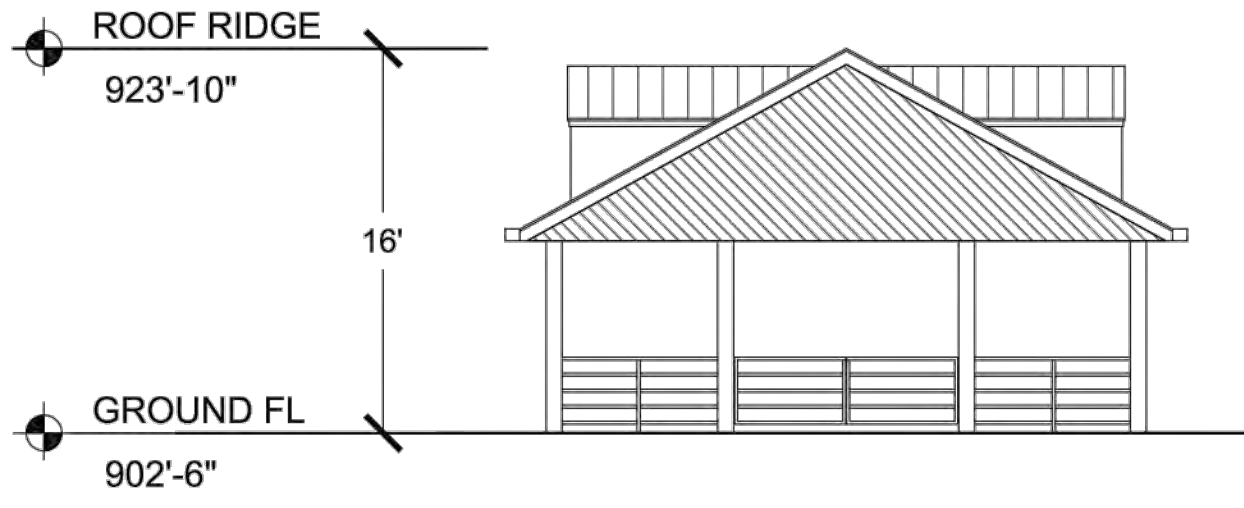
7 DESIGN PRECEDENTS



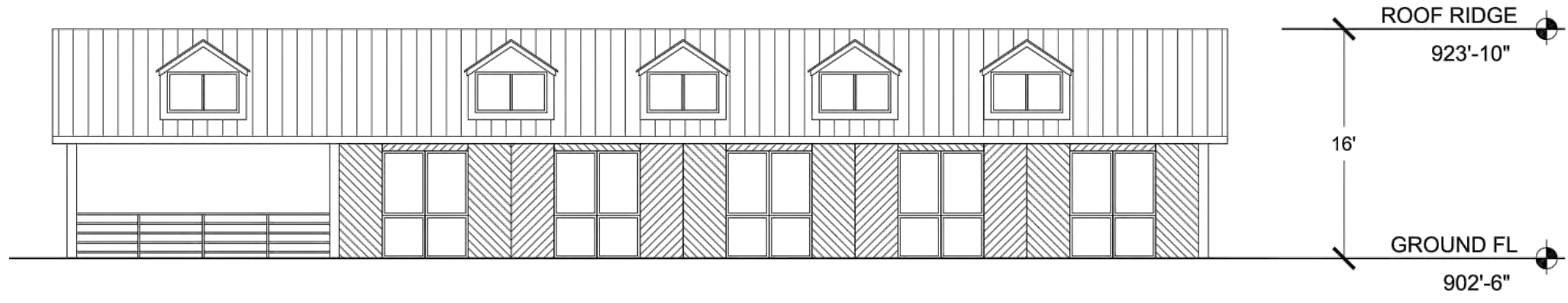
4 STUDIO WEST ELEVATION
1/8" = 1'



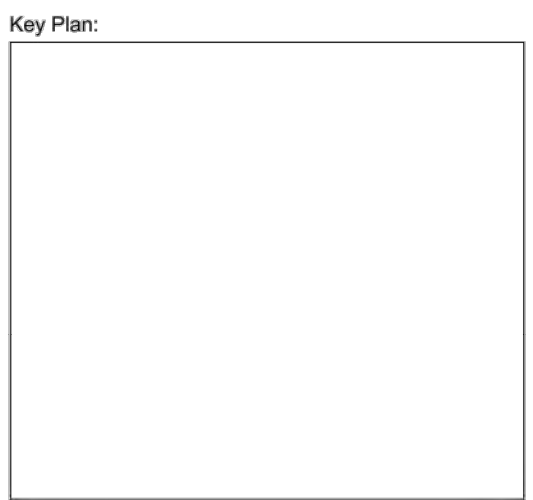
3 STUDIO SOUTH ELEVATION
1/8" = 1'



2 BARN WEST ELEVATION
1/8" = 1'



1 BARN SOUTH ELEVATION
1/8" = 1'



Client
Garrett's Space
Designer:
MASS Design Group
Architect of Record:
MASS Design Group
Structural Engineering Consultant:

MEP Consultant:

Civil Engineer Consultant:
Midwestern Consulting



Project
GARRETT'S SPACE
Superior Township
Ann Arbor, Michigan

Notes
Area Plan

Drawing Title
CONCEPTUAL
BUILDING
ELEVATIONS

Drawing Date
FEBRUARY 28, 2023

Drawing Number

A.200



| Revisions | | | |
|-----------|------|-------------|----|
| NO. | DATE | DESCRIPTION | BY |
| | | | |
| | | | |
| | | | |
| | | | |
| | | | |

Key Plan:

Client
 Garrett's Space
 Designer:
 MASS Design Group
 Architect of Record:
 MASS Design Group
 Structural Engineering Consultant:
 MEP Consultant:
 Civil Engineer Consultant:
 Midwestern Consulting

MASS.

Project
 GARRETT'S SPACE
 Superior Township
 Ann Arbor, Michigan
 Notes
 Area Plan

Drawing Title
 EXISTING BUILDING
 ELEVATION IMAGES

Drawing Date
 FEBRUARY 28, 2023

Drawing Number
A.201