



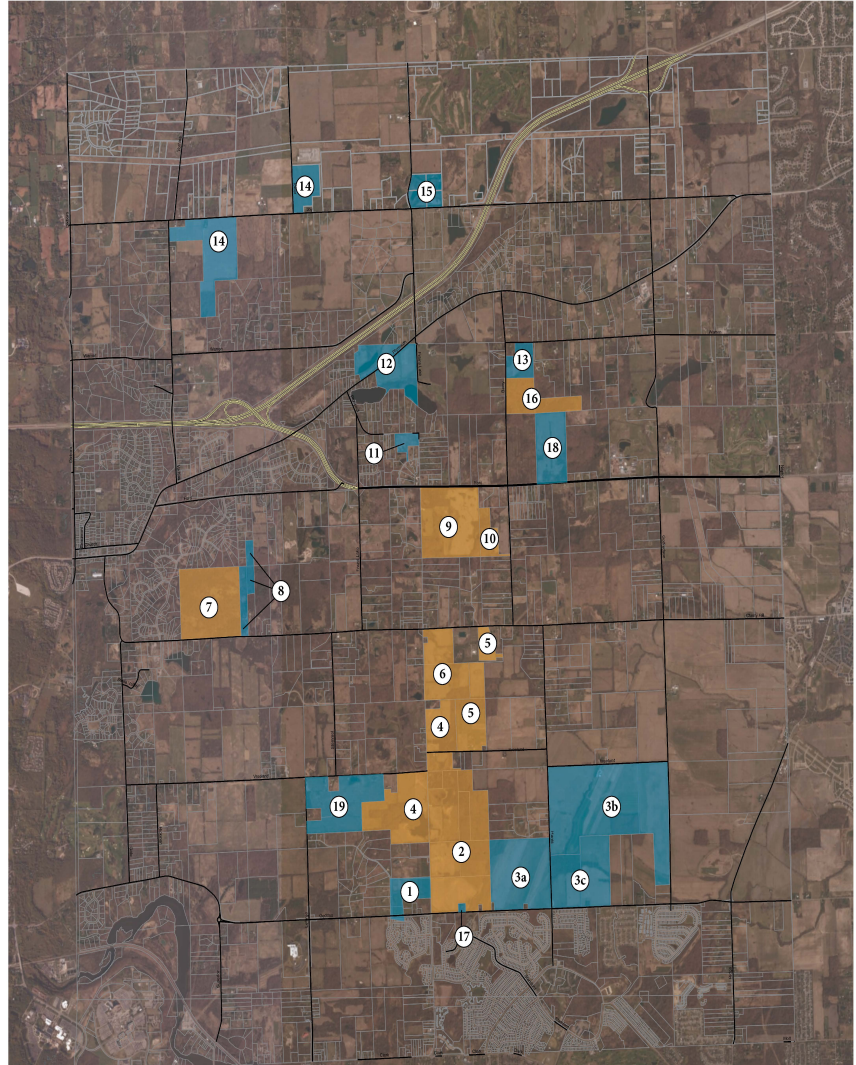
The Superior Greenway

The Superior Greenway

Prospect Road,
from Ford Road to
Geddes Road

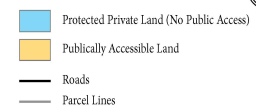
The Superior Greenway is the name that has been given to the swath of protected and preserved land parcels that line the east and west sides of Prospect Road through the middle of Superior Township. It is a joint project involving the Southeast Michigan Land Conservancy, the Open Space and Parkland Preservation Program of the City of Ann Arbor, the Washtenaw County Natural Areas Preservation Program and Superior Charter Township. It covers over 2,000 protected acres, with over half of the land available for public access.

The Greenway, a defining feature of Superior Township, has been designed to provide a natural buffer from development for people and animals alike in our Washtenaw County locale. It encompasses several nature preserves and allows vistas of open land to travelers on Prospect Road. We invite you to take a drive up or down our Superior Greenway, and stop in to visit any of its nature preserves.



Key to Protected Property in the Superior Greenway

#Property	Owner	Acres
1	Private Conservation Easement	40
2	LeFurge Woods Nature Preserve	325
3a	Brookside (Schultz) Farm (Private)	158
3b	Brookside (Schultz) Farm (Private)	369
3c	Brookside (Schultz) Farm (Private)	136
4	Meyer Preserve	138
5	Conservancy Farm	99
6	Jack R. Smiley Nature Preserve	100
7	Cherry Hill Nature Preserve	160
8	Conservation Easement (3)	35
9	Kosch-Headwaters Preserve	160
10	Springhill Nature Preserve	30
11	North Prospect Park	15
12	Staebler Farm	86
13	Schroeter Park	33
14	Fishbeck Farmland	165
15	Private Conservation Easements (2)	42
16	Weatherbee Preserve	65
17	Conservation Easement	2.5
18	Conservation Easement	82
19	Conservation Easement	129



All Preserves are Open to the Public every day from Sunrise to Sunset.

Map data provided by Washtenaw County GIS Program 2013. Map Data current as of August 1, 2013 and is for general reference only. Aerial image provided by ESRI and SINGA. Protected land data updated March 14, 2014. Southeast Michigan Land Conservancy, Washtenaw County or their partners do not make any claim to the accuracy of this information.

Please respect owners of private property by only visiting land listed as publicly accessible.

