



PARKS &
RECREATION

SUPERIOR CHARTER TOWNSHIP PARKS & RECREATION COMMISSION MEETING

The Superior Township Parks & Recreation Commission

JUNE 2022

Regular Meeting

will be held

MONDAY, JUNE 27, 2022 @ 6:30 p.m.

at

SUPERIOR TOWNSHIP HALL

3040 N. Prospect Rd.

(Corner of Cherry Hill & Prospect)

Current COVID-19 protocols will be in place

For additional info call: (734) 480-5502
or email: superiorparks@superior-twp.org

SUPERIOR CHARTER TOWNSHIP PARKS & RECREATION COMMISSION MEETING

Juan Bradford	Marion Morris
Guy Conti	Patrick Pigott
Martha Kern-Boprie	Nahid Sanii-Yahyai
Terry Lee Lansing	Riley Schofield
Bernice Lindke	Gregory Vessels

Superior Township Parks & Recreation Commission

JUNE 2022

Regular Meeting

will be held

MONDAY, JUNE 27th @ 6:30 p.m.

at

SUPERIOR TOWNSHIP HALL



PARKS &
RECREATION



PARKS &
RECREATION

PARKS & RECREATION COMMISSION REGULAR MEETING
June 27, 2022 @ 6:30 P.M.
AGENDA

- 1) CALL TO ORDER**
- 2) ROLL CALL**
- 3) FLAG SALUTE**
- 4) AGENDA APPROVAL**
- 5) PRIOR MEETING MINUTES APPROVAL**
 - A) May 23, 2022
- 6) CITIZENS PARTICIPATION**
- 7) REPORTS**
 - A) Chairperson
 - B) Administrator
 - C) Board Liaison
 - D) Board Meeting Attendee
 - E) Park Steward
 - F) Safety
- 8) COMMUNICATIONS**
 - A) Educational: Heat Related Illness
 - B) Youth Tennis Flier
 - C) Harvest Moon Park Reservation
- 9) OLD BUSINESS**
 - A) Five-Year Plan Update: Open House Report
 - B) Community Center Advisory Committee Update
- 10) NEW BUSINESS**
 - A) July 2022 Parks & Recreation Month Resolution
 - B) "Movies on the Green" Sign-up
- 11) BILLS FOR PAYMENT**
 - A) May 24, 2022 – June 27, 2022
- 12) FINANCIAL STATEMENTS**
 - A) May 2022 Revenue & Expenditure Report
- 13) PLEAS AND PETITIONS**
- 14) ADJOURNMENT**

Next Meeting: July 25, 2022 @ 6:30 pm

SA

Superior Charter Township Park Commission
Regular Meeting
May 23, 2022

Proposed Minutes

1. Call to Order

The meeting was called to order by Chair Marion Morris at 6:32 pm.

2. Roll Call

3. Park Commissioners present: Marion Morris, Nahid Sanii-Yahyai, Martha Kern-Boprie, Greg Vessels, Terry Lee Lansing, Riley Schofield

Park Commissioners absent: Guy Conti (excused)

Others present: Trustee Bernice Lindke; Juan Bradford, Park Administrator; Patrick Pigott

4. Agenda Approval

It was moved by Nahid Sanii-Yahyai and supported by Greg Vessels to approve the agenda as drafted. The motion carried.

5. Prior Meeting Minutes Approval

A. April 25, 2022

It was moved by Nahid Sanii-Yahyai and supported by Marion Morris to approve the minutes of 4/25/22 with the following corrections:

Board Liaison Report – Fourth sentence, correct spelling of the eighth word so that it reads “Subject matter experts will be invited to present as needed.”

New Business B. Community Park Sidewalk Bid Award – in paragraph after the list of bidders and bid amounts, correct the spelling in the first sentence so that it reads “Juan Bradford said he researched both bidders...”.

The motion carried.

6. Citizen Participation

There was none.

7. Reports

A. Chairperson

Chair Marion Morris had nothing to report.

B. Administrator

Juan Bradford submitted a written report. He added to the written report that he is discussing policy that prohibits alcohol consumption in township parks, with other township officials.

C. Board Liaison

Trustee Bernice Lindke reported on a special township board meeting held 5/11/22 and the regular township board meeting held 5/16/22.

5/11/22 This special meeting was held to amend the Rock Property land contract to allow for payment in full of all principal and accrued and unpaid interest on any date after eighteen months. This amendment was needed to satisfy terms for bond insurance. The resolution to amend the land contract passed.

5/16/22 At the regular meeting, Treasurer Brenda McKinney announced her retirement effective 5/31/22. Many people in the audience shared stories about their relationship and positive interactions with Treasurer McKinney.

The township's auditor informed the board that the officials have received the Financial Statement Audit & Representation letter for the year ended 12/31/2021.

Several members of the Community Center Advisory Committee shared their thanks and positive reviews about the membership of the committee and work performed to date.

Margery Dosey, a township resident, gave a presentation on creating an official Facebook page for our township.

Clerk Lynette Findley gave a report on the Community Center Advisory Committee retreat and said a second meeting will be held on May 23.

A resolution to accept an amendment to an OHM proposal for widening Harris Road passed.

A resolution to approve a land agreement for farming the old "Rock" property passed.

Approval was granted to purchase a shed to be located on the Dixboro Village Green.

A motion to bid the township sidewalk repair project passed.

D. Board Meeting Attendee

Nahid Sanii-Yahyai attended the Township Board meeting on May 16. She concurred with Trustee Lindke's report.

E. Park Steward

No report.

F. Safety

There were no accidents or injuries in the past month.

8. Communications

A. Educational: Health Benefits and Economic Impacts of Parks

B. Frog & Toad Survey at Schroeder Park

C. Washtenaw County 2022 Clean Up Days

It was moved by Martha Kern-Boprie and supported by Nahid Sanii-Yahyai to receive the Communications. The motion carried.

9. Old Business

A. Five Year Plan Update: Open House Report

About 30 people attended the open house. Feedback is due from Carlisle Wortman on the choices expressed by those who attended.

B. Community Center Advisory Committee Update

This committee held a meeting today at 5:00 pm. The committee worked on a mission statement.

Greg Dill, Washtenaw County Administrator spoke. There is a lot of momentum for this initiative at the county level.

C. Donations Policy

Trustee Bernice Lindke researched laws governing donations by a governmental body to private and charitable organizations. The result is public money cannot be used for donations or private purposes.

Marion Morris moved to not contribute funds to SouthEast Land Conservancy. The motion died for lack of support,

10. New Business

A. Live! Here! Now! Concert – volunteer sign-up

The following park commissioners volunteered to help at the Live! Here! Now! concert on Saturday, June 4 in Fireman's Park.

Martha Kern-Boprie
Marion Morris

11. Bills for Payment

It was moved by Marion Morris and supported by Greg Vessels to approve payment of the bills totaling \$31,271.57 through 5/23/22. The motion carried.

12. Financial Statements

A. April 2022 Revenue & Expenditure Report

It was moved by Terry Lee Lansing and supported by Martha Kern-Boprie to receive the April financial report. The motion carried.

13. Pleas and Petitions

Nahid Sani-Yahyai commented that the open house on the Township Master Plan and Park and Open Space Plan was well organized. She wished more people would have attended.

Bernice Lindke complimented everyone who helped with Kite and Rocket Day.

14. Adjournment

It was moved by Martha Kern-Boprie and supported by Greg Vessels to adjourn at 7:23 pm. The motion carried.

Submitted by,
Martha Kern-Boprie, Park Commissioner and Secretary



PARKS &
RECREATION

**ADMINISTRATOR REPORT
MAY 27, 2022**

13

- Next Board of Trustees Meeting: Monday, July 18, 2022 @ 7:00 p.m.
Attendee: Commissioner Schofield
- Thank you to everyone that volunteered for the Live! Here! Now! event. The attendance was much better than last year, and the music appealed to a larger audience.
- John Copley reached out to me requesting that next years prescribed burn at CHNP be targeted to the western edge of the preserve. That area is becoming overcome with Oriental Bittersweet. I will meet with John on site to identify the areas to burn in spring 2023
- Youth tennis lessons began last week and will run weekly through July 27th. The first evening of lessons was canceled due to the heat advisory. Any time there is a heat advisory or the threat of inclement weather we will cancel lessons. The health and safety of the kids will always be our first priority.
- Summer Playground Camp started last week and will run through August 18th. All three of the camp sites are at full capacity and there is a very good group of qualified camp counselors overseeing the kids.

Respectfully Submitted,

Juan Bradford

HEAT-RELATED ILLNESSES

8A

WHAT TO LOOK FOR

WHAT TO DO

HEAT STROKE

- High body temperature (103°F or higher)
- Hot, red, dry, or damp skin
- Fast, strong pulse
- Headache
- Dizziness
- Nausea
- Confusion
- Losing consciousness (passing out)

- Call 911 right away-heat stroke is a medical emergency
- Move the person to a cooler place
- Help lower the person's temperature with cool cloths or a cool bath
- Do not give the person anything to drink

HEAT EXHAUSTION

- Heavy sweating
- Cold, pale, and clammy skin
- Fast, weak pulse
- Nausea or vomiting
- Muscle cramps
- Tiredness or weakness
- Dizziness
- Headache
- Fainting (passing out)

- Move to a cool place
- Loosen your clothes
- Put cool, wet cloths on your body or take a cool bath
- Sip water

Get medical help right away if:

- You are throwing up
- Your symptoms get worse
- Your symptoms last longer than 1 hour

HEAT CRAMPS

- Heavy sweating during intense exercise
- Muscle pain or spasms

- Stop physical activity and move to a cool place
- Drink water or a sports drink
- Wait for cramps to go away before you do any more physical activity

Get medical help right away if:

- Cramps last longer than 1 hour
- You're on a low-sodium diet
- You have heart problems

SUNBURN

- Painful, red, and warm skin
- Blisters on the skin

- Stay out of the sun until your sunburn heals
- Put cool cloths on sunburned areas or take a cool bath
- Put moisturizing lotion on sunburned areas
- Do not break blisters

HEAT RASH

- Red clusters of small blisters that look like pimples on the skin (usually on the neck, chest, groin, or in elbow creases)

- Stay in a cool, dry place
- Keep the rash dry
- Use powder (like baby powder) to soothe the rash



HEAT HEALTH AND SAFETY

MICHIGAN SUMMER WEATHER



This fact sheet explains some of the health risks associated with excessive heat. Read on for more information about heat-related illness and how you can protect yourself and your family when it is hot outside.

Health Risks of Hot Weather

When it is very hot, there is an increased risk of heat-related illness because the body's temperature rises and cannot be cooled by sweating or the other ways the body cools itself. The most severe heat-related illnesses are heat exhaustion and heat stroke. If not treated, heat exhaustion can worsen and cause heat stroke or death. The figure below shows common symptoms of heat exhaustion and heat stroke.

Types of heat-related illness

Heat Exhaustion Symptoms

Faint or dizzy

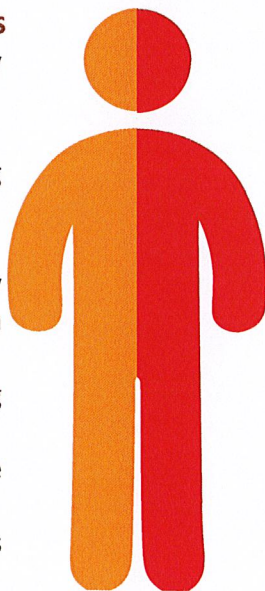
Excessive sweating

Cool, pale clammy skin

Nausea or vomiting

Rapid pulse

Muscle cramps



Heat Stroke Symptoms

Confusion, disorientation

Very high body temperature

Red, hot skin may be dry or sweaty

Nausea or vomiting

Rapid pulse

May lose consciousness

Death rates increase during heat waves because of heat stroke and related conditions, but also from other conditions such as cardiovascular disease and respiratory disease.¹

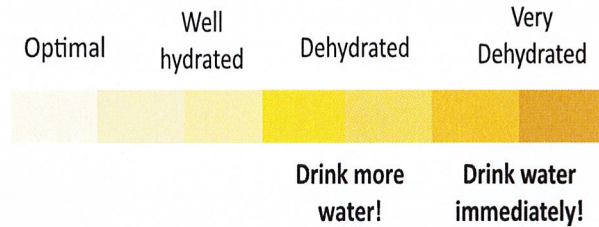
What to do for heat exhaustion	What to do for heat stroke
<ul style="list-style-type: none"> • Move to a cool place. • Loosen your clothes. • Put cool, wet cloths on your body or take a cool bath. • Drink cool water. <p>Get medical help if:</p> <ul style="list-style-type: none"> • You throw up or cannot drink, • Your symptoms get worse, • Your symptoms last longer than one hour. 	<ul style="list-style-type: none"> • Call 911 right away. • Move the person to a cooler place. • Help lower the person's temperature with cool cloths or cool bath.

Drinking **WATER** is the best way to stay hydrated while working in the heat.

It is also important to eat regular meals that replace the salt lost from sweating.

The urine color test

The color of your urine can tell you if you should be drinking more water. If you are well hydrated, your urine will be a very light yellow. The more dehydrated you are the darker your urine will be.²



How Can I Protect Myself?

Stay Cool



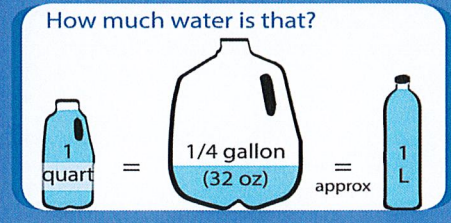
- Limit your time in the heat.
- When it is above 90° F, find somewhere with air conditioning or take cool showers or baths. Don't rely on electric fans to stay cool.
- Wear loose, lightweight, light-colored clothing.
- Avoid direct sunlight.
- Watch the forecast. Give yourself time to adjust to the hot weather.

Stay Hydrated

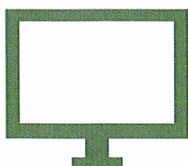


- Drink more water than usual.
- Drinking more often is better than drinking large amounts infrequently.
- Drink before you get thirsty.
- Avoid alcohol or liquids that have high amounts of sugar and/or caffeine.

When working or being active in the heat, drink about one cup of water every 15-20 minutes. Drink about one quart of water per hour.²



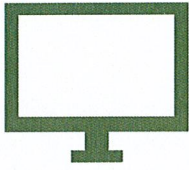
Stay Informed



Explore Michigan Data

- Visit the [MiTracking Program site](#) and select the “Go to the data” button for Michigan data on heat illness and extreme heat.
 - For **heat-related illness data**, select the “Health” category and “Heat illness” content area.
 - For **extreme heat data**, select the “Environment” category, “Climate change” content area, and “Extreme heat (historical data)” indicator.
- Check out the [Michigan Climate and Health Adaptation Program \(MICHAP\)](#)'s report on [Excessive Heat Impacts on Health](#).

Stay Informed



Get Alerts

- Sign up for your local Emergency Notification System such as CodeRed for weather warnings.
- Pay attention to weather reports when it is hot or if a heat emergency is declared.
- Many weather phone apps also provide National Weather Service (NWS) heat alert information.

The **NWS** issues Heat Advisories and Excessive Heat Warnings when the Heat Index* is expected to rise to a dangerous level.

- A **NWS Heat Advisory** is issued in Michigan when the Heat Index value is expected to exceed 100°F for three consecutive hours, which can be extended into the night if low temperatures are in the 70s or higher. A NWS Heat Advisory may be issued for lower criteria if it is early in the season or during a multi-day heat wave.³
- A **NWS Excessive Heat Warning** is issued in Michigan when the Heat Index value is expected to exceed 105°F for at least three consecutive hours.³

*The Heat Index accounts for the combined effects of relative humidity and the actual air temperature to estimate the heat stress on the human body.

At-Risk Groups

Who is most at risk for heat-related illness?

- People older than 65
- Outdoor workers
- Low-income individuals and families
- Infants and children
- People who live alone
- People without air conditioning
- People who exercise outside
- People with chronic conditions (e.g., diabetes, cardiovascular disease, and respiratory disease)

For people with chronic medical conditions or taking medications

- Talk with your primary care provider about how you should monitor and protect yourself during extreme heat.

For outdoor workers

- Drink plenty of water.
- Wear and reapply sunscreen as indicated on the package.
- Ask if tasks can be scheduled for earlier or later in the day to avoid midday heat.
- If possible, work shorter shifts until your body has gotten used to the heat and take frequent breaks to rest and cool down.
- For more information, check out the [CDC/National Institute for Occupational Health and Safety \(NIOSH\) Heat Stress webpage](#).

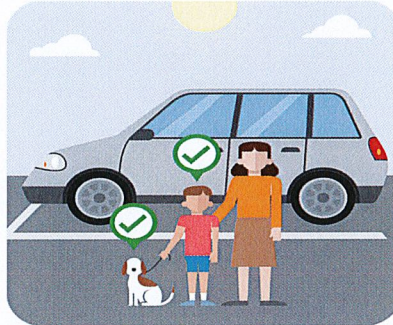
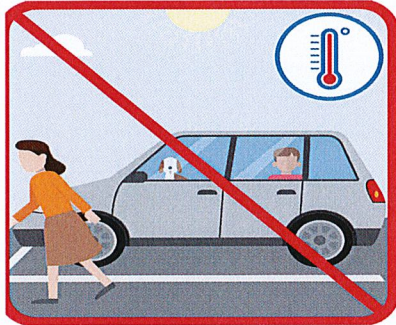
For people without air conditioning

- Use a buddy system - check on a friend or neighbor and have someone do the same for you.
- If someone in the home is at least 55 years old, or if air conditioning is medically necessary, apply for State Emergency Relief (SER) by visiting [MI Bridges](#).
- Text or call [Michigan 211](#) or contact your local health department to locate a cooling center (e.g., public library, mall, or community center) and air-conditioned shelters in your area.
- Spend some time at a shopping mall, public library, or other public buildings - even a few hours spent in air conditioning can help.

Children and Pets in Cars

It only takes **two minutes** for a car to reach unsafe temperatures. Every year children and pets left in parked vehicles die from heat stroke.⁴ Heat stroke is the leading cause of non-crash, vehicle-related deaths in children under 15.⁵

- Never leave a child, disabled person, or pet in your car, even if the windows are open.
- Even the most caring and watchful person can forget a child or pet is also in the vehicle. Always check to make sure all children and pets are out of the car before locking it and walking away.
- Teach children that cars are not safe places to play. Store your keys out of reach of children.
- Leave pets at home when you can.



A child's body warms three to five times faster than an adult's.

Never leave infants, children, or pets in a parked car.

Other Resources

Visit these webpages for more information:

- Centers for Disease Control and Prevention (CDC)'s [Warning Signs and Symptoms of Heat-Related Illness](#).
- CDC's [Protecting Vulnerable Groups from Extreme Heat](#).
- CDC's [Tips for preventing heat-related illness](#).
- National Oceanic Atmospheric Administration's [Keep your pets cool](#).
- American Veterinary Medical Association's [Pets in Vehicles](#).

References

1. EPA. 2021. Climate Change Indicators: Heat-Related Deaths. Retrieved June 2, 2021 from <https://www.epa.gov/climate-indicators/climate-change-indicators-heat-related-deaths>
2. CDC. 2017. Heat Stress: Hydration. Retrieved March 23, 2021, from [Heat Stress: Hydration \(cdc.gov\)](#)
3. National Weather Service. Heat Awareness. Retrieved March 19, 2020, from weather.gov/dtx/heataware2
4. National Weather Service. Children, Pets, and Vehicles. Retrieved March 19, 2020, from weather.gov/safety/heat-children-pets
5. American Academy of Pediatrics. Prevent Child Deaths in Hot Cars. Retrieved May 7, 2021, from <https://www.healthychildren.org/English/safety-prevention/on-the-go/Pages/Prevent-Child-Deaths-in-Hot-Cars.aspx>.

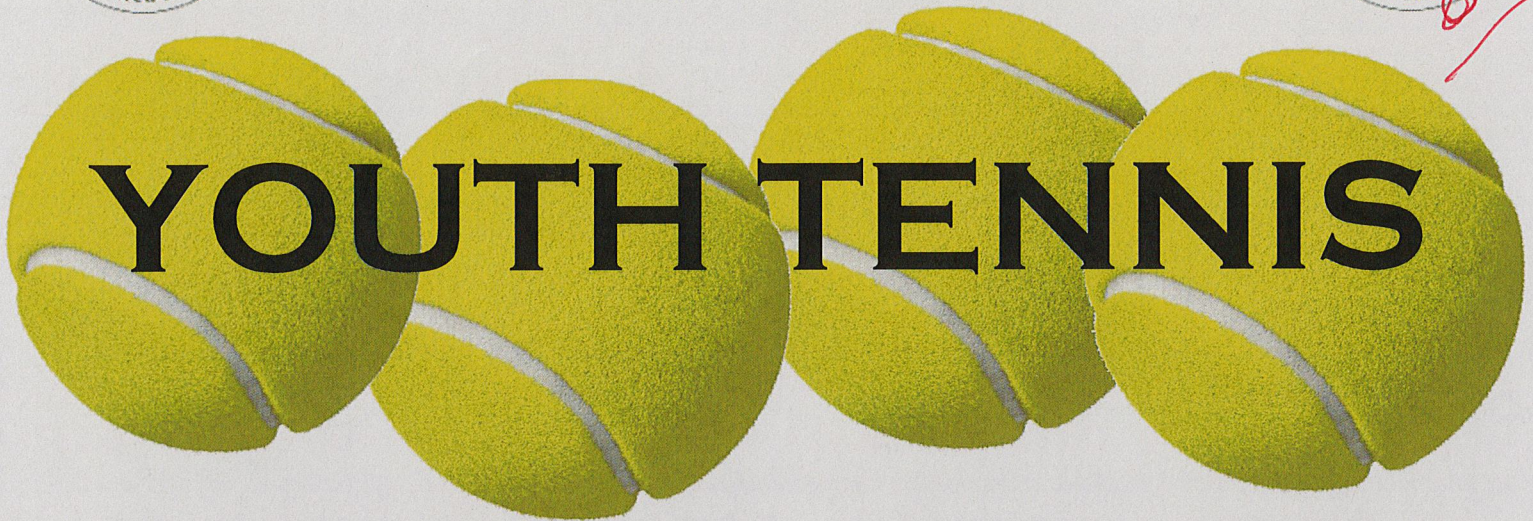
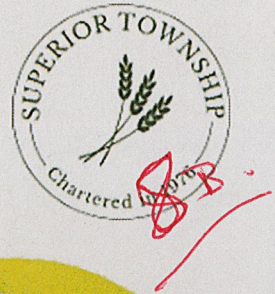
This fact sheet was prepared by the [Michigan Climate and Health Adaptation Program](#) and [MiTracking Program](#), Michigan Department of Health and Human Services, updated April 2021.



MDHHS-Pub-1405 (10-21) The Michigan Department of Health and Human Services will not exclude from participation in, deny benefits of, or discriminate against any individual or group because of race, sex, religion, age, national origin, color, height, weight, marital status, partisan considerations, or a disability or genetic information that is unrelated to the person's eligibility.



**SUPERIOR TOWNSHIP
PARKS & RECREATION
(734) 480-5502**



**To help introduce kids to the sport of tennis,
Superior Township Parks & Recreation
will be offering FREE weekly beginners
tennis lessons to kids ages 6 – 13.**

**Children must be residents of
Superior Township.**

Must provide proof of residency.

**Lessons will be held on Tuesday and
Wednesday evenings from 5:00-6:00pm.**

**Summer session begins Tuesday, June 21st
and will run for six weeks.**

Equipment is provided for use.

**For additional info contact
Parks & Recreation Department
(734) 480-5502**

superiorparks@superior-twp.org



**SUPERIOR TOWNSHIP
PARKS & RECREATION DEPARTMENT
575 E. Clark Rd. Superior Twp. MI 48198**



PARK RENTAL FORM

Renter's Name: Anthony Lutz Phone: 810-627-3144

Address: 9732 Maple

City, State: Ypsi MI Zip Code: 848198

E-mail: asmith385@emich.edu

Park Requested: Harvest Moon Date(s): 6/26/22

Times: From: NOON To: 6pm

Event: Graduation celebration

Number of Participants: 25

Will admission be charged: Yes No If Yes, what amount: open

Will food and/or beverages be served: Yes No If Yes, how often: open buffet

Please list any special equipment to be used (lighting, sound system, etc.):
None

Cleanup will be completed by: Anthony Lutz Phone: 810-627-3144

In partial consideration for the use of Superior Township premises by any person and/or organization, and as a condition thereof, such person or organization or itself and its members, by acceptance of such use, forever releases and holds the Township of Superior harmless from any and all claims for personal injury or property damage. All users MUST adhere to Township noise ordinances and MUST leave the park in the same condition as originally found, including all pickup and disposal of trash. No bathroom facilities will be provided by the Parks & Recreation Department and is the responsibility of the party renting the park.

I also understand that it is my responsibility to inform the members of the group about these restrictions and will so inform them. I further understand that Superior Township has the right to terminate this contract at any time they deem it necessary in the best interests of the Township.

Cleaning & Security Deposit will be returned ONLY in the event all conditions of this form are met. Additional charges WILL be charged if any damage is found to have happened during the usage of the park.

Charges: Deposit: \$ 100.00
 Rental Fee: 0
 Additional Fees: 0 Description: _____
 TOTAL FEE: \$ 100.00

DEPOSIT RECEIVED
\$ 6/3/22

Renter's Signature: [Signature] Date: 5/24/22

Superior Township's Approval: [Signature] Date: 5/25/22

10A.

**PARKS & RECREATION COMMISSION
CHARTER TOWNSHIP OF SUPERIOR
WASHTENAW COUNTY, MICHIGAN**

**RESOLUTION DESIGNATING JULY 2022
PARK & RECREATION MONTH**

PARKS & RECREATION COMMISSION RESOLUTION 2022-01

WHEREAS parks and recreation is an integral part of communities throughout this country, including the Charter Township of Superior MI; and

WHEREAS parks and recreation promotes health and wellness, improving the physical and mental health of people who live near parks; and

WHEREAS parks and recreation promotes time spent in nature, which positively impacts mental health by increasing cognitive performance and well-being, and alleviating illnesses such as depression, attention deficit disorders, and Alzheimer; and

WHEREAS parks and recreation encourages physical activities by providing space for popular sports, hiking trails, swimming pools and many other activities designed to promote active lifestyles; and

WHEREAS parks and recreation is a leading provider of healthy meals, nutrition services and education; and

WHEREAS park and recreation programming and education activities, such as out-of-school time programming, youth sports and environmental education, are critical to childhood development; and

WHEREAS parks and recreation increases a community's economic prosperity through increased property values, expansion of the local tax base, increased tourism, the attraction and retention of businesses, and crime reduction; and

WHEREAS parks and recreation is fundamental to the environmental well-being of our community; and

WHEREAS parks and recreation is essential and adaptable infrastructure that makes our communities resilient in the face of natural disasters and climate change; and

WHEREAS our parks and natural recreation areas ensure the ecological beauty of our community and provide a place for children and adults to connect with nature and recreate outdoors; and

WHEREAS the U.S. House of Representatives has designated July as Parks and Recreation Month; and

WHEREAS the Charter Township of Superior recognizes the benefits derived from parks and recreation resources.

NOW THEREFORE, BE IT RESOLVED BY the Charter Township of Superior's Parks & Recreation Commission that July 2022 is recognized as Park and Recreation Month in the Charter Township of Superior.

CERTIFICATION STATEMENT

I, Martha Kern-Boprie, Secretary of the Charter Township of Superior Parks & Recreation Commission, Washtenaw County, Michigan, do hereby certify that the foregoing is a true and correct copy of a resolution adopted at a regular meeting of the Charter Township of Superior Parks & Recreation Commission held on June 27, 2022, and that public notices of said meeting were given pursuant to Act No. 267, Public Acts of Michigan, 1976, as amended.

Martha Kern-Boprie, Secretary
Parks & Recreation Commission

Date Certified

Roll Call vote:

Ayes:

Nays:

Absent:

MOVIES on the GREEN



SUPERIOR TOWNSHIP PARKS & RECREATION

Sat. July 9th Fun & Games at 8pm Movie at 9:15pm

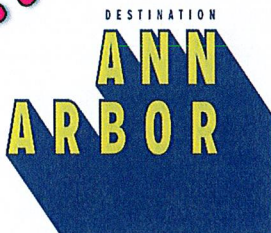
Dixboro Village Green

5221 Church Rd, Superior Township

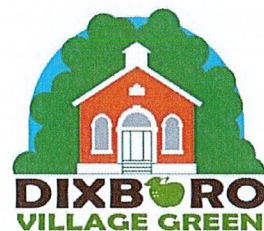
**Bring your lawn chairs, blankets, and snacks (NO alcohol)
for a great family movie under the stars!!!**

Sponsored by:

FREE!!!



**PARKS &
RECREATION**



FREE!!!

Check Date	Bank	Check #	Invoice	Payee	Description	Account	Dept	Amount
Fund: 508 PARKS & RECREATION								
05/24/2022	GENL	45366	6161206	MML WORKERS' COMP FUND	WORKER'S COMP INSURANCE 7/1/22-6/30/23	123.050	000	2,294.78
05/24/2022	GENL	45372	52622 -GBP	SUPERIOR TWP PAYROLL FUND	CASH TRANSFER 5/26/22 PAYROLL	289.000	000	8,663.46
05/31/2022	GENL	45383	MAY 22	SUPERIOR TWP PAYROLL FUND	PENSION /HCSP - MAY 2022	289.000	000	1,334.34
05/31/2022	GENL	45388#	1642018449	WALMART	KITES & SHOP SUPPLIES	740.000	754	72.89
			1642018449		KITES & SHOP SUPPLIES	740.000	754	92.10
			1642018449		KITES & SHOP SUPPLIES	740.000	754	150.03
			1642018449		KITES & SHOP SUPPLIES	740.000	755	94.67
				CHECK GENL 45388 TOTAL FOR FU				409.69
06/07/2022	GENL	45395	81239661	WEX BANK	FUEL -MAY 2022	742.000	755	459.24
06/07/2022	GENL	45403	MAY 22-P	DTE ENERGY	ELECTRIC - PARKS BARN -MAY 22	920.000	755	25.89
06/07/2022	GENL	45411	MAY 22	PATRICK PIGOTT	CELL PHONE STIPEND -MAY 2022	850.000	754	50.00
06/07/2022	GENL	45415	P928000GM	SAM'S CLUB/SYNCHRONY BANK	KITE AND ROCKET DAY SNACKS	740.000	754	254.04
06/07/2022	GENL	45417	2022-023	SUPERIOR TOWNSHIP CREDIT CARDZOOM - MAY 2022		205.001	000	14.99
			2022	2022 ANNUAL CREDIT CARD FEES		205.001	000	2.05
				CHECK GENL 45417 TOTAL FOR FU				17.04
06/07/2022	GENL	45419	6922	SUPERIOR TWP PAYROLL FUND	CASH TRANSFER 6/9/22 PAY	289.000	000	9,506.26
06/14/2022	GENL	45429	2165239	CARLISLE WORTMAN ASSOCIATES	2023 RECREATION PLAN - MAY 2022	801.000	751	1,410.00
06/14/2022	GENL	45435	24113	JUAN BRADFORD	REIMBURSEMENT FOR COMMISSIONER BADG740.000		751	39.00
06/14/2022	GENL	45442	A-144856	PARKWAY SERVICES	PORTAJOHN FOR LIVE HERE NOW CONCERT	801.000	754	320.00
			A-144703		PORTAJOHN @ OAKBROOK - JUNE 2022	801.000	754	120.00
				CHECK GENL 45442 TOTAL FOR FU				440.00
06/14/2022	GENL	45443	1000063182	PFEFFER, HANNIFORD & PALKA	2021 AUDIT	800.010	751	1,050.00
06/14/2022	GENL	45448	1-052522-02	SUPERIOR TWP UTILITY DEPARTME	CELL PHONE - JUAN MAY 2022	850.000	751	49.86
06/22/2022	GENL	45458	9027977-1	FUNFLICKS OUTDOOR MOVIES	MOVIES IN THE PARK -BALANCE DUE	801.000	754	300.00
06/22/2022	GENL	45459	98456	GENE BUTMAN FORD SALES, INC.	REPAIRS - 2011 PICKUP	930.000	755	1,775.66
06/22/2022	GENL	45468	A-144897	PARKWAY SERVICES	PORTAJOHN @ FIREMAN'S PARK -JUNE 20	20801.000	755	120.00
06/22/2022	GENL	45480#	1-062122-01	SUPERIOR TWP UTILITY DEPARTME	BRADFORD - CELL PHONE - JUNE 22	850.000	751	49.83

Handwritten mark: A with a red checkmark

Check Date	Bank	Check #	Invoice	Payee	Description	Account	Dept	Amount
Fund: 508 PARKS & RECREATION								
			I-061022-01					
				CHECK GENL 45480	TOTAL FOR FU			
06/22/2022	GENL	45483	99814	WOLVERINE RENTAL & SUPPLY		742.000	755	825.40
								875.23
						930.000	755	45.31
					Total for fund 508 PARKS & RECREATION			29,119.80

'#'-INDICATES CHECK DISTRIBUTED TO MORE THAN ONE DEPARTMENT

2022

ACTIVITY FOR MONTH 05/31/22

GL NUMBER	DESCRIPTION	ORIGINAL BUDGET	AMENDED BUDGET	YTD BALANCE 05/31/2022	AVAILABLE BALANCE	% BGDT USED	YTD BALANCE 05/31/2021
Fund 508 - PARKS & RECREATION							
Revenues							
Dept 000 - REVENUE							
508-000-588.000	GENERAL FUND CONTRIBUTION	311,451.00	311,451.00	129,771.25	181,679.75	41.67	125,991.69
508-000-588.025	RES #2021-20 ADD'L S FROM GEN	0.00	0.00	3,500.00	(3,500.00)	100.00	0.00
508-000-604.000	REIMBURSEMENT FOR LABOR COSTS	15,000.00	15,000.00	326.72	14,673.28	2.18	326.72
508-000-663.000	INTEREST ON RESERVES INCOME	1,000.00	1,000.00	0.00	1,000.00	0.00	20.84
508-000-664.000	INTEREST	0.00	0.00	12.14	(12.14)	100.00	0.00
508-000-673.000	INSURANCE REIMBURSEMENTS INCOM	500.00	500.00	225.77	274.23	45.15	0.00
508-000-680.000	TREASURY BILL FEES	0.00	0.00	(859.42)	859.42	100.00	0.00
508-000-695.000	TENNIS LESSON FEES	2,000.00	2,000.00	0.00	2,000.00	0.00	0.00
508-000-696.000	DONATIONS	600.00	600.00	1,150.00	(550.00)	191.67	1,558.23
508-000-698.000	MISCELLANEOUS INCOME	0.00	0.00	1,600.00	(1,600.00)	100.00	0.00
Total Dept 000 - REVENUE		330,551.00	330,551.00	135,726.46	194,824.54	41.06	127,897.48
TOTAL REVENUES		330,551.00	330,551.00	135,726.46	194,824.54	41.06	127,897.48
Expenditures							
Dept 751 - PARK & REC. ADMINISTRATION							
508-751-701.000	COMMISSION STIPENDS	9,057.00	9,057.00	5,864.25	3,192.75	64.75	3,008.31
508-751-702.000	SALARIES	39,867.00	39,867.00	18,020.72	21,846.28	45.20	16,375.70
508-751-702.002	CONTROLLER SALARY	6,216.00	6,216.00	2,661.11	3,554.89	42.81	2,708.90
508-751-710.000	TRAINING	1,000.00	1,000.00	0.00	1,000.00	0.00	0.00
508-751-717.000	TAXABLE BENEFITS	0.00	0.00	40.00	(40.00)	100.00	0.00
508-751-728.000	POSTAGE	100.00	100.00	0.00	100.00	0.00	0.00
508-751-740.000	OPERATING SUPPLIES	1,000.00	1,000.00	135.33	864.67	13.53	196.33
508-751-800.010	PROFESSIONAL SERVICES - AUDIT	1,100.00	1,100.00	0.00	1,100.00	0.00	0.00
508-751-801.000	PROFESSIONAL SERVICES - OTHER	17,000.00	17,000.00	5,611.70	11,388.30	33.01	541.40
508-751-850.000	TELECOMMUNICATIONS	750.00	750.00	249.35	500.65	33.25	249.99
508-751-851.000	INSURANCE & BONDS	10,000.00	10,000.00	3,607.40	6,392.60	36.07	3,745.31
508-751-860.000	TRANSPORTATION	1,200.00	1,200.00	126.95	1,073.05	10.58	136.08
508-751-900.000	PRINTING & PUBLISHING	3,000.00	3,000.00	0.00	3,000.00	0.00	0.00
508-751-930.000	REPAIR & MAINTENANCE	500.00	500.00	0.00	500.00	0.00	0.00
508-751-945.000	OFFICE RENT	6,000.00	6,000.00	6,000.00	0.00	100.00	0.00
508-751-958.000	MEMBERSHIPS & DUES	650.00	650.00	500.00	150.00	76.92	460.00
508-751-963.000	BANK FEES & CHARGES	300.00	300.00	2.05	297.95	0.68	1.68
508-751-981.000	EQUIPMENT UNDER \$5,000	1,000.00	1,000.00	0.00	1,000.00	0.00	0.00
508-751-999.000	MISCELLANEOUS EXPENSE	200.00	200.00	0.00	200.00	0.00	0.00
Total Dept 751 - PARK & REC. ADMINISTRATION		98,940.00	98,940.00	42,818.86	56,121.14	43.28	27,423.70
Dept 754 - RECREATION							
508-754-702.000	SALARIES	10,277.00	10,277.00	1,796.16	8,480.84	17.48	988.84
508-754-717.000	TAXABLE BENEFITS	200.00	200.00	0.00	200.00	0.00	0.00
508-754-740.000	OPERATING SUPPLIES	3,500.00	3,500.00	882.24	2,617.76	25.21	940.75
508-754-801.000	PROFESSIONAL SERVICES - OTHER	6,000.00	6,000.00	1,011.06	4,988.94	16.85	2,022.56
508-754-801.050	PROFESSIONAL SERVICES-TENNIS I	2,000.00	2,000.00	0.00	2,000.00	0.00	0.00
508-754-850.000	TELECOMMUNICATIONS	600.00	600.00	250.00	350.00	41.67	250.00
508-754-860.000	TRANSPORTATION	100.00	100.00	0.00	100.00	0.00	0.00
508-754-930.000	REPAIR & MAINTENANCE	500.00	500.00	0.00	500.00	0.00	0.00
508-754-975.000	SIGNAGE	2,073.00	2,073.00	771.00	1,302.00	37.19	0.00
Total Dept 754 - RECREATION		25,250.00	25,250.00	4,710.46	20,539.54	18.66	4,202.15

12A

GL NUMBER	DESCRIPTION	2022		YTD BALANCE 05/31/2022	ACTIVITY FOR MONTH 05/31/22	AVAILABLE BALANCE	% BGD USED	YTD BALANCE 05/31/2021
		ORIGINAL BUDGET	AMENDED BUDGET					
Fund 508 - PARKS & RECREATION								
Expenditures								
Dept 755 - PARK MAINTENANCE				37,225.67	9,032.97	57,538.33	39.28	38,241.10
508-755-702.000	SALARIES	94,764.00	94,764.00	0.00	0.00	700.00	0.00	0.00
508-755-710.000	TRAINING	700.00	700.00	0.00	0.00	(216.13)	107.09	11,208.34
508-755-717.000	TAXABLE BENEFITS	3,047.00	3,047.00	3,263.13	0.00	4,492.85	18.31	777.34
508-755-740.000	OPERATING SUPPLIES	5,500.00	5,500.00	1,007.15	107.51	500.00	0.00	0.00
508-755-740.003	HERBICIDE (NON-SELECTIVE)	500.00	500.00	0.00	0.00	8,000.00	0.00	0.00
508-755-740.004	SAND-GRAVEL-BARK-SOIL	8,000.00	8,000.00	0.00	0.00	900.00	0.00	0.00
508-755-741.000	UNIFORMS	900.00	900.00	0.00	0.00	3,258.57	27.59	839.46
508-755-742.000	FUEL-LUBRICANTS	4,500.00	4,500.00	1,241.43	459.24	1,698.25	32.07	1,023.65
508-755-801.000	PROFESSIONAL SERVICES - OTHER	2,500.00	2,500.00	801.75	160.35	600.00	0.00	0.00
508-755-850.000	TELECOMMUNICATIONS	600.00	600.00	0.00	0.00	100.00	0.00	0.00
508-755-860.000	TRANSPORTATION	100.00	100.00	0.00	0.00	754.24	11.27	138.48
508-755-920.000	UTILITIES	850.00	850.00	95.76	25.89	12,083.94	3.33	2,543.88
508-755-930.000	REPAIR & MAINTENANCE	12,500.00	12,500.00	416.06	0.00	1,560.00	68.80	4,600.00
508-755-930.001	CONTROLLED BURNS	5,000.00	5,000.00	3,440.00	3,440.00	500.00	0.00	0.00
508-755-975.000	SIGNAGE	500.00	500.00	0.00	0.00	35,000.00	0.00	0.00
508-755-980.000	EQUIPMENT OVER \$5,000	35,000.00	35,000.00	0.00	0.00	1,302.00	13.20	0.00
508-755-981.000	EQUIPMENT UNDER \$5,000	1,500.00	1,500.00	198.00	0.00			
Total Dept 755 - PARK MAINTENANCE		176,461.00	176,461.00	47,688.95	13,225.96	128,772.05	27.03	59,372.25
Dept 756 - PARK DEVELOPMENT/IMPROVEMENT								
508-756-951.000	PROJECTS	5,000.00	5,000.00	0.00	0.00	5,000.00	0.00	0.00
Total Dept 756 - PARK DEVELOPMENT/IMPROVEMENT		5,000.00	5,000.00	0.00	0.00	5,000.00	0.00	0.00
Dept 966 - UNALLOCATED EXPENSES								
508-966-715.000	FICA	12,578.00	12,578.00	5,268.67	1,176.39	7,309.33	41.89	5,548.66
508-966-858.000	PENSION	12,322.00	12,322.00	3,503.24	0.00	8,818.76	28.43	6,455.02
Total Dept 966 - UNALLOCATED EXPENSES		24,900.00	24,900.00	8,771.91	1,176.39	16,128.09	35.23	12,003.68
TOTAL EXPENDITURES		330,551.00	330,551.00	103,990.18	32,477.71	226,560.82	31.46	103,001.78
Fund 508 - PARKS & RECREATION:								
TOTAL REVENUES		330,551.00	330,551.00	135,726.46	26,361.70	194,824.54	41.06	127,897.48
TOTAL EXPENDITURES		330,551.00	330,551.00	103,990.18	32,477.71	226,560.82	31.46	103,001.78
NET OF REVENUES & EXPENDITURES		0.00	0.00	31,736.28	(6,116.01)	(31,736.28)	100.00	24,895.70