



PARKS &
RECREATION

SUPERIOR CHARTER TOWNSHIP PARKS & RECREATION COMMISSION MEETING

The Superior Township Parks & Recreation Commission

MARCH 2022

Regular Meeting

will be held

MONDAY, MARCH 28, 2022 @ 6:30 p.m.

at

SUPERIOR TOWNSHIP HALL

3040 N. Prospect Rd.

(Corner of Cherry Hill & Prospect)

Current COVID-19 protocols will be in place

For additional info call: (734) 480-5502

or email: superiorparks@superior-twp.org

SUPERIOR CHARTER TOWNSHIP PARKS & RECREATION COMMISSION MEETING

Juan Bradford	Marion Morris
Guy Conti	Patrick Pigott
Martha Kern-Boprie	Nahid Sanii-Yahyai
Terry Lee Lansing	Riley Schofield
Bernice Lindke	Gregory Vessels

Superior Township Parks & Recreation Commission

MARCH 2022

Regular Meeting

will be held

MONDAY, MARCH 28 @ 6:30 p.m.

at

SUPERIOR TOWNSHIP HALL



**PARKS &
RECREATION**



PARKS &
RECREATION

**PARKS & RECREATION COMMISSION REGULAR MEETING
MARCH 28, 2022 @ 6:30 P.M.
AGENDA**

- 1) CALL TO ORDER**
- 2) ROLL CALL**
- 3) FLAG SALUTE**
- 4) AGENDA APPROVAL**
- 5) PRIOR MEETING MINUTES APPROVAL**
 - A) February 28, 2022
- 6) CITIZENS PARTICIPATION**
- 7) REPORTS**
 - A) Chairperson
 - B) Administrator
 - C) Board Liaison
 - D) Board Meeting Attendee
 - E) Park Steward
 - F) Safety
- 8) COMMUNICATIONS**
 - A) Educational: Landscape Alternatives
 - B) Superior Township Master Plan; Dixboro Presentation
 - C) 2022 Summer Playground Camp
- 9) OLD BUSINESS**
 - A) Five-Year Plan Update: April Meeting
 - B) 2022 Special Events
- 10) NEW BUSINESS**
 - A) Easter Egg Hunt Sign-up
 - B) Prescribed Burn Proposal
 - C) Commissioner Decorum
 - D) Commission Minutes Detail
- 11) BILLS FOR PAYMENT**
 - A) March 1, 2022 – March 28, 2022
- 12) FINANCIAL STATEMENTS**
 - A) February 2022 Revenue & Expenditure Report
 - B) February 2022 Balance Sheet
- 13) PLEAS AND PETITIONS**
- 14) ADJOURNMENT**

Next Meeting: April 25, 2022 @ 6:30 pm

5A

Superior Charter Township Park Commission
Regular Meeting
February 28, 2022

Proposed Minutes

1. Call to Order

The meeting was called to order by Vice-Chair Nahid Sanii-Yahyai at 6:30 pm.

2. Roll Call

Park Commissioners present: Nahid Sanii-Yahyai, Terry Lee Lansing, Riley Schofield, Guy Conti, Greg Vessels, Martha Kern-Boprie

Park Commissioners absent: Marion Morris (excused)

Others present: Trustee Rhonda McGill; Juan Bradford, Park Administrator; Patrick Pigott, Maintenance Supervisor & Recreation Coordinator

3. Flag Salute

Vice-Chair Nahid Sanii-Yahyai led those assembled in the Pledge of Allegiance to the Flag.

4. Agenda Approval

It was moved by Guy Conti and supported by Riley Schofield to approve the agenda as drafted. The motion carried.

5. Prior Meeting Minutes Approval

A. January 24, 2022

It was moved by Riley Schofield and supported by Guy Conti to approve the minutes of 1/24/22 as drafted. During discussion on the motion Nahid Sanii-Yahyai stated she did not believe the draft minutes fully reported the reasons some park commissioners supported the stipend increase approved during the January 24 meeting. Martha Kern-Boprie asked Nahid where in the minutes the text was located that Nahid disagreed with, and what was the correction Nahid sought. After extensive discussion, Nahid stated that the first paragraph of New Business B. should be amended, and the amendment should be: After the sentence "Some commissioners volunteer more than others" insert the following text: "Some of the commissioners who were in favor of the raise did not agree that the commissioners attend only one-hour meetings and have a short packet to review. Many attend multiple meetings and events." Riley Schofield and Guy Conti stated the amendment was acceptable to them and could be voted on as part of the main motion to approve the minutes of January 24, 2022. The motion carried.

6. Citizen Participation

No one was in the audience.

7. Reports

A. Chairperson

Vice-Chair Nahid Sanii-Yahyai noted that Marion Morris took some time off for recovery. She also reported that she, Paula Jefferson, Martha Kern-Boprie, Juan Bradford and consultant Chris Nordstrom participated in a planning meeting for the Five-Year Plan.

B. Administrator

Juan Bradford submitted a written report. In addition to that report, he provided the following updates:

Juan met with Ann Arbor Summer Festival leadership about a Live-Here-Now pop-up concert that will take place in Fireman's Park on June 4

A Five-Year Plan Open House will take place in April. Additional planning meetings will occur before that.

Following up on a suggestion from Martha Kern-Boprie, he submitted a grant application to the League of Michigan Bicyclists for a micro-grant for some bicycle equipment such as bike racks in our parks. Award decisions expected in April.

The letter of support for the grant application to the Wilson Foundation for Fireman's Park was submitted. We do not know when the award will be announced.

Trustee Rhonda McGill clarified that the community center advisory committee will only exist for a year or so. Parks gets one voting member on the advisory committee. It could be Juan or a commissioner. Trustee McGill emphasized that the advisory committee seeks first to hear from the community, rather than talk to the community, and for this reason did not want to load the advisory committee with too many government officials. The advisory committee will only contain one representative from the Board of Trustees.

Summer programming – Juan wants to include tennis and pickleball instruction this summer. He has also met with Nick Lacey who directs "Mighty Oaks Soccer" about starting a soccer program in Superior Township parks this summer.

C. Board Liaison

Trustee Rhonda McGill provided an update on the community center advisory committee. She followed up on clarifications in the Administrator's Report. It is very important to the Board of Trustees that the process seek input from the community, and not be overly bureaucratic or government driven. She anticipates there will be several task forces pursuing different elements of the project, and park commissioners will be welcome to serve on these task forces.

D. Board Meeting Attendee

Greg Vessels attended the February 22 Township Board meeting. Supervisor Ken Schwartz discussed potential acquisition of Cheney Elementary School on Stamford for the Community Center. There are many code defects in this structure. The township is also investigating acquisition of other property for this purpose. Concerning the Rock Property, the township is seeking financial assistance. The township hired David Kimble as Fire Marshal for 20 hours per week. Hyundai Corp. seeks to construct a test track on its property. The township is discussing installation of a cross walk at Harris and MacArthur.

E. Park Steward

Juan Bradford has not heard from Ellen Kurath lately. He expects to hear from her after spring arrives. Martha Kern-Boprie asked Juan to convey to Ellen that she is willing to help with removing some invasive plants.

F. Safety

Patrick Pigott reported there have been no accidents or injuries in the past month. He also reported that he is taking a MI-OSHA class in preventing workplace injuries.

8. Communications

A. Educational: 3-Pronged Approach to the Success of Michigan's Parks

B. MLive Article: Inside the Push for a Ypsilanti Area Community Center

It was moved by Martha Kern-Boprie and supported by Guy Conti to receive the Communications. The motion carried.

9. Old Business

A. Five – Year Plan Update

An Open House on the Five-Year Plan will take place in April. Planning meetings will take place during the next month.

10. New Business

A. Role of Township Board Liaison

Guy Conti spoke about the resource a board liaison represents; and that it would be prudent for the Park Commission to access the resource that the Township Board Liaison represents and not limit the Liaison to simply reporting.

It was moved by Guy Conti and supported by Martha Kern-Boprie to grant the Township Board Liaison floor privilege of voice but no vote, on Park Commission business. The motion carried.

11. Bills for Payment

It was moved by Martha Kern-Boprie and supported by Greg Vessels to pay the bills totaling \$15,856.16 through 2/28/2022. The motion carried.

12. Financial Statements

A. January 2022 Revenue & Expenditure Report

B. January 2022 Balance Sheet

It was moved by Terry Lee Lansing and supported by Guy Conti to receive the January 2022 financial statements. The motion carried.

13. Pleas and Petitions

Guy Conti recommended Park Commissioners be cautious about sending email votes outside of public meetings.

14. Adjournment

It was moved by Nahid Sanii-Yahyai and supported by Greg Vessels to adjourn at 7:25 pm.

Submitted by,
Martha Kern-Boprie, Park Commissioner & Secretary



TB

PARKS &
RECREATION

**ADMINISTRATOR REPORT
MARCH 28, 2022**

- Next Board of Trustees Meeting: Monday, April 18, 2022 @ 7:00 p.m.
Attendee: Commissioner Vessels
- The bids for the ADA sidewalk at Community Park are due next week. I will have a bid tally and recommendation for you at the April meeting.
- I have been in touch with Jason Gold from the Michigan Folk School about holding some sort of "wildcrafting" event at Fireman's Park sometime this spring or summer. Unfortunately, we are having some difficulty with scheduling an instructor. I will continue to explore options.
- We are still working on collecting bids for a new 4WD mower. Prices have increased significantly, and the availability of equipment is far below regular surplus levels. Both of these issues are difficult to find the right equipment at the right price.
- We are currently hiring for part-time summer maintenance staff. The advertised hourly rate is \$17.00. This is up from previous years due to inflation and the competitive nature of the employment market
- The musical act selected by the Ann Arbor Summer Festival for the Live! Here! Now! pop-up concert on June 4th at Firemen's Park will be the Gabriel Brass Band. They are a New Orleans Jazz type group. We are also working to get other community organizations involved such as the Ypsi District Library and the Ypsi Community School District. There will also be a business mixer for local minority owned businesses prior to the music.

Respectfully Submitted,

A handwritten signature in blue ink, appearing to read "Juan Bradford", with a long, sweeping flourish extending upwards and to the right.

Juan Bradford

70.

To: Superior Township Park Commission
From: Martha Kern-Boprie
Subject: Board Attendee Report on March 21, 2022 Township Board Meeting
Date: March 22, 2022

Adoption of Agenda

The agenda was amended with the addition of New Business F. Community Center Advisory Committee

During Citizen Participation, the following people spoke:

Tom Freeman on behalf of Friends of Dixboro Village about plans for Dixboro activities. Tom was joined by a man named Karl and a woman named Emily. Emily also serves on the township planning commission.

I promoted the Easter Egg Hunt on April 9 at Firemans Park.

A man named Jerry (did not say his last name) who lives in Washington Square subdivision spoke. He was pleased with follow-up on pothole repairs and the beginning of speed enforcement by the Sheriff Office. He still is concerned with lack of progress in installing speed bumps on Stephens Drive. He called the Washtenaw County Road Commission (WCRC) recently and was told the case for speed bumps was closed out 2/25/22 using June data during a 24 hour period, from the area. Jerry said much traffic cuts through on Stephens Drive, and he wants speed bumps to slow it down. Jerry asked several times if he had a vote in the decision to install speed bumps, as he lives on Pine Court at the corner of Stephens Drive.

Ken Schwartz responded that radio speed monitors were installed by the Sheriff Office recently and will capture vehicle and speed data for a one week period. Ken confirmed that all residents of Stephens Drive and the residents of the courts that open onto Stephens Drive may sign the petitions to request speed bumps. It is not a vote in an election, but an opportunity to formally request speed bumps via petition. Ken said the township will contact WCRC. Jerry remains concerned by conflicting answers from different public officials.

Lavada Weathers is a township resident, and spoke about her request to be appointed to the Community Center Advisory Committee.

Matt Schuster of 5766 Geddes Road spoke about continued concern about construction near his home that he finds violates the private road ordinance. He asserts surface water run-off is still a problem. Emails sent to township hall indicate another parcel has added access to the private road.

Robert Penny of 8623 Pine Court

There is heavy traffic on Stephens Drive and he wants speed bumps.

Kelly Goolsby – with the Washtenaw County Health Department and wants to know the role of the Community Center Advisory Committee. She wants the Community Center sooner than later.

Another person spoke, whose name I did not catch. This person wants more people on the Advisory Committee and wants action now.

Gail Summerhill of “Ypsi Can I Share”

She is angry that the Community Center has not moved forward faster.

New Business Item F. Community Center Advisory Committee was taken out of order at the end of Citizen Participation because so many audience members had expressed interest in it. A list of 18 people recommended for appointment to the Community Center Advisory Committee was presented. The size of the Advisory Committee is capped at 19 members. Discussion took place on the role and authority of the Advisory Committee. Township Board members clarified that only the Township Board has authority to take actions related to the Community Center. The Advisory Committee will advise the Township Board. Working groups will be created to

advance the goals of the Advisory Committee. Participation in the working groups will likely exceed the membership of the Advisory Committee.

It was moved and supported to appoint the following to the Community Center Advisory Committee

Eric Seberry	Juan Bradford
Donovan Golden	Ricky Jefferson
Rhonda Seberry	Nora Martin
Debbie Mitchell Covington	Brandon Tucker
Jasmil De la Cruz	Aja Haywood
Harold Wimberley	Jason Gold
Yodit Mesfin Johnson	Teresa Gillotti
Kelly Goolsby	Representative: Washtenaw County Sheriff Department
Cassandra Sheriff	Lynette Findley

The motion carried.

The Township Board returned to its regular agenda order at this point.

Presentation by Teresa Gillotti of the Washtenaw County Office of Community Economic Development on the "Barrier Busters" program. This is funding and a program that provides direct assistance to overcome individual barriers that jeopardize stable housing and income. Examples can be vehicle repairs to facilitate holding jobs, assistance with utility bills, and skills training for both non-profit organizations and for individuals. Last year's funding was \$500,000. Ms. Gilotti noted that as COVID relief programs are ending, evictions are beginning again.

Supervisor's Report

Ken Schwartz reported that police and fire millages will expire this year and will appear on the ballot for renewal. The Board of Review met earlier in March. The township received bids for removal of eleven trees from Harvest Lane. Some have grown into sewer lines and clogged the lines. Ken spoke with Harvest Lane residents, and no one expressed opposition to the tree removal. Award of bid will be on the April agenda. Interviews were conducted with applicants for zoning and building official. The township Utility Dept will give a presentation at the April meeting on Michigan Environmental, Great Lakes and Energy (EGLE) rules and regulations. Ken interviewed Mike Hickock for Neighborhood Watch Coordinator. The Fairfax subdivision has sold well. A side benefit of this, is these sales and homes have raised the sale price of homes in the Harvest Lane/Wiard Road neighborhood. A rubbish clean-up is needed on MacArthur Blvd near Harris. Ken met with bond council regarding a bond for the Rock Property acquisition. A tax-exempt bond is sought.

New Business

- A. Resolution 2022-12 Approve hiring Utility Clerk Cheryl Jensen
Lisa Bradford resigned to take a job paying \$8.00 more per hour than the job at Superior Twp Utility Dept. Cheryl Jensen is recommended, and was offered \$23.00 per hour which is more than Lisa started at. Discussion took place about the wage increase. Ken Schwartz noted that the current labor market is driving the wage increases. He also stated that Cheryl Jensen was offered the position and wage, contingent upon Township Board approval. The board approved the hire at \$23.00 per hour.

- B. Resolution 2022-13 Promote Landis Smith as Superior Township Utility Billing Specialist and Community Liaison
Ken Schwartz stated that Landis Smith is very competent, holds a Bachelor's degree and is working on a Master's degree. Ken also stated that Landis has been offered a job at Ypsilanti Community Utilities Authority (YCUA) at a higher salary, and Ken does not want to lose Landis and his skills. Ken is recommending a promotion with expanded duties and a salary increase. Trustee Lindke objected to multiple individual salary upgrades, and asked that a salary/wage review be conducted for all township positions before approving any more pay increases. She said a wage review could be completed before the April township board meeting. Ken said he could see the merit of a wage study, but wants action on

this promotion now. A roll call vote was taken on the promotion and pay increase for Landis Smith, and it passed by a vote of 4 yes to 3 no.

- C. Resolution 2022-14 Approve the Purchase of Personal Protective Equipment for the Fire Dept with the Federal Emergency Management Agency (FEMA) grant. This is a large purchase for multiple fire departments. Superior Twp is acting as the fiduciary. The portion of the purchase for Superior Twp is \$22,916. The equipment vendor is named Apollo.
- D. Resolution 2022-15 Approve the OHM Advisor's Proposal for Pedestrian Pathway and Crossing Improvements along MacArthur Blvd between Stamford Rd and Harris Rd. Approved.
- E. Resolution 2022-16 Approve the new lease for the Utility Department's Folder/Inserter Machine. Approved.

Pleas and Petitions

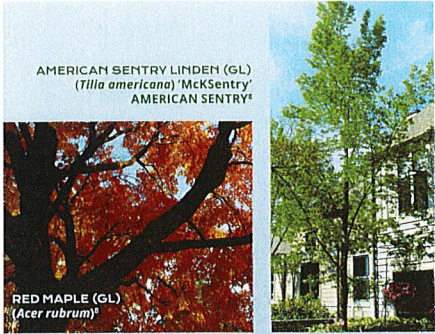
Jerry who lives on Pine Ct in Washington Square subdivision again expressed his frustration with speed bumps not installed yet.

Yodit Mesfin Johnson, Norfolk street resident and member of Community Center Advisory Committee expressed concern about the role of the Township Board in decision making related to the Community Center. Trust is critical. We have to know what is "In Bounds" and "Out of Bounds".

This led to a discussion between audience members and Township Board members about the role of the Township Board vs the Advisory Committee in directing the future of the Community Center.

Adjournment

The meeting adjourned at 8:55 pm.



AMERICAN SENTRY LINDEN (GL)
(*Tilia americana*) 'McK Sentry'
AMERICAN SENTRY[®]



RED MAPLE (GL)
(*Acer rubrum*)[®]



ALLEGHENY SERVICEBERRY (GL)
(*Amelanchier laevis*)[®]

Landscape Alternatives

Many invasive woody plants were purposefully introduced to be grown in the landscape. This brochure provides alternatives to **invasive woody plants still found in trade** and to **invasive plants that are no longer sold but are still commonly found in urban and suburban neighborhoods**. Alternatives were selected based on the following criteria:

- Shared ornamental features
- No evidence of spreading from cultivation
- Available from nurseries and garden centers
- Reasonably easy to grow in the region

Download our app!

The **Midwest Invasive Plant Network** has a free mobile app full of information on invasive landscape plants to avoid, as well as suitable alternatives.



For more information on woody invasive plants and what to do about them, or to get an electronic copy of this brochure, visit the WIGL Collaborative at woodyinvasives.org

To learn more about the landscape alternatives described here, including full descriptions and growing requirements, we recommend the following references:

PRINT

Midwestern Native Shrubs and Trees: Gardening Alternatives to Nonnative Species: An Illustrated Guide
Charlotte Adelman and Bernard L. Schwartz. 2017. Ohio University Press, Athens, OH.

The Tree Book

Michael A. Dirr and Keith S. Warren. 2019. Timber Press, Portland, OR.

Essential Native Trees and Shrubs for the Eastern United States: The Guide to Creating a Sustainable Landscape
Tony Dove and Ginger Woolridge. 2018. Charlesbridge, Watertown, MA.

ONLINE

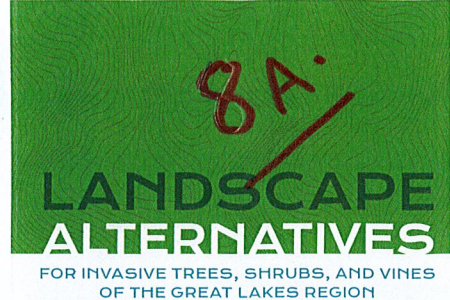
The Morton Arboretum
mortonarb.org/plant-and-protect/trees-and-plants

Missouri Botanical Garden
missouribotanicalgarden.org/plantfinder/plantfindersearch.aspx



This brochure was published by the Midwest Invasive Plant Network for the Woody Invasives of the Great Lakes (WIGL) Collaborative. Recommendations were developed by the WIGL Collaborative's Landscape Alternatives Committee. The WIGL Collaborative and its products are funded by the Great Lakes Restoration Initiative via U.S. Environmental Protection Agency cooperative agreement GL-00E0212.

The views and conclusions contained in this document are those of the authors and should not be interpreted as representing the opinions or policies of the U.S. Environmental Protection Agency. Mention of trade names or commercial products does not constitute their endorsement by the U.S. Environmental Protection Agency.



Everybody loves a beautiful landscape

Woody plants are vital to landscape and garden design. In addition to their beauty, they provide **shade and privacy, hold soil in place, filter rainwater, and improve air quality**. Gardeners and designers often choose woody plants that are hardy, adaptable, and fast-growing. Some species are selected because their fruits are colorful in the garden during winter and attract songbirds. Unfortunately, the **same traits that make a plant desirable in the landscape can contribute to invasiveness** if they spread and grow in natural areas.

VERNAL WITCHHAZEL (NA)
(*Hamamelis vernalis*)[®]

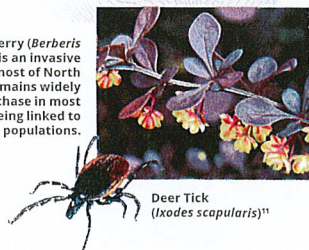


AMERICAN BITTERSWEET (GL)
(*Celastrus scandens*)[®]

What are invasive plants?

Invasive plants are defined as species that are non-native and cause harm. Often, invasive plants harm the environment by establishing dense populations in natural areas, outcompeting native plants, and damaging wildlife habitat. There is also evidence that dense populations of certain woody invasive plants promote increased populations of tick species that carry human diseases.

Japanese barberry (*Berberis thunbergii*) is an invasive species in most of North America.¹⁰ It remains widely available for purchase in most states despite being linked to increased tick populations.



Deer Tick
(*Ixodes scapularis*)¹¹

Why native plants?

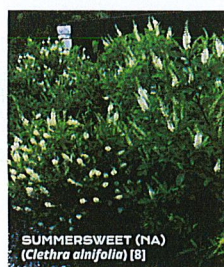
The vast majority of plants that are not native to the Great Lakes region are not invasive. However, native plants **provide food and shelter that support a diversity of insects, birds, and other critters. They transform backyards into habitats!**

CATEGORIES OF LANDSCAPE ALTERNATIVES

Great Lakes Native (GL) – A plant species that was **historically present in the Great Lakes Basin** prior to European colonization. Natural resource agencies and native plant societies are great resources to learn which plants are native to your location.

North American Native (NA) – A plant species that was **historically present in North America** but not within the Great Lakes Basin prior to European colonization. Species that evolved in regions south of the Great Lakes may be the most able to adapt to climate change.

Non-Native Plant (NN) – A plant species that was **brought to North America by humans and did not evolve here.** The vast majority of non-native plants are not invasive.



SUMMERSWEET (NA)
(*Celastrus alnifolia*) [8]



DUTCHMAN'S PIPE (NA)
(*Aristolochia macrophylla*) [7]



CULTIVARS
The fall color of hybrid fothergilla (*Fothergilla x intermedia*) cultivars **LEGEND OF THE FALL[®]** and **RED MONARCH[™]** rival that of invasive burning bush.⁹

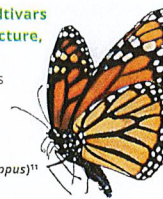
What are cultivars?

Cultivars are plants developed or selected from the wild by plant breeders to **enhance or change certain characteristics**. "Cultivar" is shorthand for **cultivated variety**. For some landscape alternatives, cultivars are recommended because they share more desirable traits with the invasive plant, are cold hardy in the Great Lakes region, or were bred to resist diseases.

CULTIVARS, POLLINATORS, AND WILDLIFE

Gardeners who prioritize providing pollinator forage or wildlife habitat should choose either **locally seed-grown plants or cultivars that have the same flower structure, flower color, and foliage color** as the species. Research indicates that these traits often have the biggest influence on provision of ecological benefits.

Monarch butterfly (*Danaus plexippus*)¹¹



On the **LANDSCAPE ALTERNATIVES TABLE** (see reverse), the species common name is given first, followed by the scientific name in parentheses. Cultivar names appear in single quote marks, and trademarked names are in all caps.

EXAMPLES

Common Name (Scientific name) 'Cultivar'
TRADEMARK

River birch (*Betula nigra*) 'Cully' HERITAGE[®]

Landscape Alternatives Table

GL = GREAT LAKES NATIVE
 NA = NORTH AMERICAN NATIVE
 NH = NON-NATIVE AND NON-INVASIVE

◆ = SHARED CHARACTERISTIC BETWEEN INVASIVE AND ALTERNATIVE
 ◇ = CHARACTERISTIC SOMEWHAT PRESENT

INVASIVE SHRUB ALTERNATIVES

Carolina Allspice¹¹

Native Category	Growing Zones	Good as a Screen	Good for Hedging	Showy Spring Flowers
GL	3-9	◆	◆	◆
GL	3-8	◆	◆	◆
NA	4-9	◆	◆	◇
NH	4-8	◆	◆	◆

DON'T PLANT Border Privet
(Ligustrum obtusifolium)
 Try these instead:

American Cranberry Bush¹¹

Native Category	Growing Zones	Good for Hedging	Colorful Fall Foliage	Adaptable to Many Soils
GL	2-7	◆	◆	◆
GL	4-9	◆	◆	◆
GL	5-9	◆	◆	◆
NA	5-8	◆	◆	◇
NA	5-9	◆	◆	◇

DON'T PLANT Burning Bush
(Euonymus alatus)
 Try these instead:

Twinberry Flowers¹¹

Native Category	Growing Zones	Showy Fragrant Flowers	Attracts Birds	Shade Tolerant
GL	4-9	◆	◆	◆
GL	4-10	◆	◆	◇
NA	4-8	◆	◆	◆
NH	4-8	◆	◆	◇

DON'T PLANT Non-native Bush Honeysuckle
(Lonicera spp.)
 Try these instead:

Ninebark¹¹

Native Category	Growing Zones	Good for Hedging	Adaptable and Deer Resistant	Purple Summer Foliage
GL	2-7	◆ ^A	◆	◆ ^A
GL	3-8	◆	◆	◆
GL	3-9	◆ ^A	◆	◆
GL	3-7	◆	◆	◆
NA	5-7	◆	◆	◆

DON'T PLANT Japanese Barberry
(Berberis thunbergii)
 Try these instead:

INVASIVE GROUND COVER ALTERNATIVES

Lenten Rose¹¹

Native Category	Growing Zones	Spreading Habit	Evergreen	Low Maintenance
GL	2-6	◆	◆	◆
GL	3-9	◆	◆	◆
GL	4-7	◆	◆	◆
GL	3-9	◆	◆	◆
NH	3-7	◆	◆	◆
NH	4-9	◆	◇	◆

DON'T PLANT Wintercreeper
(Euonymus fortunei)
 Try these instead:

INVASIVE WOODY VINE ALTERNATIVES

Trumpet Honeysuckle¹¹

Native Category	Growing Zones	Trellis or Arbor	Showy Flowers	Attracts Birds
GL	2-8	◆	◆	◆
GL	3-7	◆	◆	◆
GL	4-9	◇	◆	◆
GL	3-9	◆	◆	◆
GL	3-8	◇	◆	◆
NA	5-9	◆	◆	◆
NA	4-9	◆	◆	◆
NA	4-10	◆	◆	◆
NA	5-10	◆	◆	◆
NH	5-9	◆	◆	◆
NH	4-7	◆	◆	◆
NH	5-8	◆	◆	◆

DON'T PLANT Japanese Honeysuckle
(Lonicera japonica),
 Asian Bittersweet
(Celastrus orbiculatus), or
 Porcelain Berry
(Ampelopsis brevipedunculata)
 Try these instead:

SMALL INVASIVE TREE ALTERNATIVES

Redbud¹¹

Native Category	Growing Zones	Small Yard or Patio	Colorful Fall Foliage	Hardy to Zone 3
GL	4-9	◆	◆	◆
GL	3-9	◆	◆	◆
GL	4-9	◆	◆	◆
GL	3-7	◆	◆	◆
NH	4-8	◆	◆	◆

DON'T PLANT Amur Maple
(Acer ginnala)
 Try these instead:

Blood-twig Dogwood¹¹

Native Category	Growing Zones	Dense Hedging	Attracts Birds	Hardy to Zone 3
GL	3-7	◆	◆	◆
GL	3-9	◆	◆	◆
GL	4-9	◆	◆	◆
NA	4-8	◆	◆	◆
NH	4-8	◆	◆	◆

DON'T PLANT Buckthorn
(Rhamnus cathartica and Frangula alnus)
 Try these instead:

MEDIUM-TO-LARGE INVASIVE TREE ALTERNATIVES

Bur Oak¹¹

Native Category	Growing Zones	Broad-Crowned	Sweeping Branches	Interesting Bark
GL	3-9	◆	◆	◆
GL	4-8	◆	◆	◆
GL	4-8	◆	◆	◆
GL	4-8	◆	◆	◆
NA	5-9	◆	◆	◆

DON'T PLANT Amur Corktree
(Phellodendron amurense)
 Try these instead:

Sweet-gum¹¹

Native Category	Growing Zones	40'+ at Maturity	Glossy Foliage	Good for Wet Areas
GL	3-9	◆	◆	◆
GL	4-9	◇	◆ ^A	◆
GL	4-9	◆	◆	◆
GL	2-6	◆	◆	◆
NA	5-9	◆	◆	◆

DON'T PLANT Black Alder
(Alnus glutinosa)
 Try these instead:

Quaking Aspen¹¹

Native Category	Growing Zones	Dappled Shade	Wide Range of Soil Types	Fast Growing ¹¹
GL	3-9	◆	◆	◆
GL	4-8	◆	◆	◆
GL	1-6	◆	◆	◆
GL	4-8	◆	◆	◇

DON'T PLANT Black Locust
(Robinia pseudoacacia)
 Try these instead:

Green Hawthorn¹¹

Native Category	Growing Zones	Pyramidal or Rounded	Showy Flowers	Colorful Fall Foliage
GL	4-8	◆	◆	◆ ^A
GL	4-9	◆	◆	◆
NA	4-7	◆	◆	◆
NA	4-8	◆	◆	◆
NH	3-7	◆	◆	◆

DON'T PLANT Callery Pear
 a.k.a. Bradford Pear
(Pyrus calleryana)
 Try these instead:

Ginkgo¹¹

Native Category	Growing Zones	40'+ at Maturity	Urban Site Tolerance	Colorful Fall Foliage
GL	3-8	◆	◆	◆
GL	3-9	◆	◆	◆
NH	4-8	◆	◆	◆
NH	4-9	◆	◆	◆

DON'T PLANT Norway Maple
(Acer platanoides)
 Try these instead:

FOOTNOTES
 A This feature is considered improved in the suggested cultivar(s) and may not be pronounced in seed-grown plants.
 B Species prone to aggressive thickets or colony formation; may not be suitable for all sites.
 C Recommended for improved cold hardiness in northern zones (zone 5 and lower).
 D Black locust is native to parts of North America, but not to the Great Lakes Basin.

E Recommended for reduced/absent seeding (reduced maintenance).
 F Recommended for improved disease resistance.
 G Flowering period is later in linden (early summer vs. early spring).
 H 'Holmstrup', a compact cultivar, is recommended as an alternative to the 'Ron Williams' FINE LINE cultivar of glossy buckthorn. Most other arbovitae cultivars are too tall to be considered small trees.

I Should be avoided in areas with viburnum leaf beetle problems.
 J Research has shown that some vendors sell invasive Asian bittersweet mislabeled as the native species. Make sure to buy from a trusted vendor. Purchasing the cultivar instead of seed grown can also help ensure that plants belong to the native species.

COVER IMAGES
 Clockwise from upper left:
 • Eastern redbud
*(Cercis canadensis)*⁷
 • Trumpet honeysuckle
*(Lonicera sempervirens)*⁸
 • Bearberry
*(Arctostaphylos uva-ursi)*⁹
 • Beauty bush
*(Kolkwitzia amabilis)*¹⁰

PHOTO CREDITS
 1 Paul Wray, Iowa State University, via bugwood.org
 2 Peter Stevens, CC-BY-NC-2.0, via flickr.com
 3 John Hagstrom
 4 Clair Ryan, MIPN
 5 Brett Whaley, CC-BY-NC-2.0, via flickr.com
 6 Bud Ohio, CC-BY-NC-2.0, via flickr.com

7 Missouri Botanical Garden Plant Finder Database
 8 The Morton Arboretum
 9 Danielle Brigida, CC-BY-NC-2.0, via flickr.com
 10 Leslie Mehrhoff, UConn, via bugwood.org
 11 iStockphoto.com



Superior Township Master Plan



S.B.

Dixboro Village Input Sessions

Superior Township is working on a new Master Plan and an update to the Parks and Recreation Master Plan

Master planning is a community driven process that relies on the input from residents, landowners, and other stakeholders to create meaningful policies that reflect the future vision for the Township. As part of the greater planning effort, the Township will be holding a series of input sessions to consider design and planning opportunities for Dixboro Village. The sessions will focus on three primary areas of discussion:

VILLAGE CHARACTER

- Building design
- Streetscape design

TRANSPORTATION

- Non-motorized facilities & safety
- Traffic calming
- Parking

LAND USE

- Commercial
- Housing
- Community Space

Meetings to be held at the Dixboro United Methodist Church, 5221 Church Street, Ann Arbor, MI on the following dates and times:

March 24 Open House
 5:00 - 7:00 p.m.
 Drop in visits welcomed

April 2 Presentation
 9:00 - 11:00 a.m.
 Presentation to begin at 9:30

To register or for any other questions, please contact Laura Bennett

Phone: (734) 482-6099

E-mail: planning@superior-twp.org



WASHTENAW
COUNTY PARKS
& RECREATION
COMMISSION

PLAYGROUND CAMP 2022

860

WEEK 1
SHOW N' TELL
6/20-6/23

WEEK 2
SPORTASTIC
6/27-6/30

WEEK 3
EXPLORERS
7/11-7/14

WEEK 4
COLOR WARS
7/18-7/21

WEEK 5
SUPERHEROES
7/25-7/28

WEEK 6
CREATIVE ARTS
8/1-8/4

WEEK 7
HEALTH & WELLNESS
8/8-8/11

WEEK 8
SUMMER SEND OFF
8/15-8/18



Staff Meet and Greet on June 15
5:30pm - 7:00pm

1601 Stamford Rd., Superior Charter Twp., MI 48198

Come meet the camp staff and ask questions!!

3 LOCATIONS

SUPERIOR

1601 Stamford Rd.
Superior Charter Twp, MI 48198

SUGARBROOK

1375 S. Harris Rd.
Ypsilanti, MI 48198

WEST WILLOW

2345 Tyler Rd.
Ypsilanti, MI 48198

2230 Platt Rd
Ann Arbor, MI 48104
washtenaw.org/parks

Questions?
Karen Harris
(734) 971 - 6337 x 324
harrisk@washtenaw.org



Washtenaw County Parks & Recreation Commission



SUPERIOR TOWNSHIP PARKS & RECREATION 2022 SPECIAL EVENTS

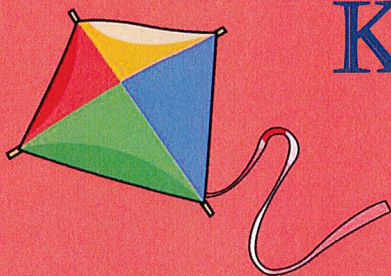


97



EASTER EGG HUNT

Date & Time: Saturday April 9th, 11:00a.m. – Noon
Rain Date & Time: Saturday April 16th, 11:00a.m. - Noon
Location: Fireman's Park, Corner of Harris & MacArthur Blvd.
Program: Easter Egg Hunt For Children Up To 11 Years Old.
Pictures With The EASTER BUNNY! Bring Your Own Basket.
Free!!! Candy Provided



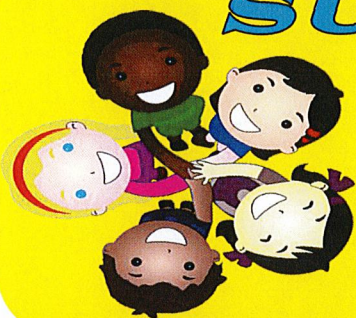
KITE & ROCKET DAY

Date & Time: Saturday May 14th, 11:00a.m. - 2:00p.m.
Rain Date & Time: Saturday May 21st, 11:00a.m. - 2:00p.m.
Location: Fireman's Park, Corner of Harris & MacArthur Blvd.
Program: Building & Flying Kites, Air Rocket Launchers
FREE!!! Snacks & Kites Provided



LIVE! HERE! NOW! POP-UP CONCERT

Date & Time: Saturday June 4th, 5:30p.m – 8:00p.m.
Location: Fireman's Park, Corner of Harris & MacArthur Blvd.
Program: Family Friendly Music, Games For The Kids!
Partners: Ann Arbor Summer Festival, Superior Township Parks & Recreation, Ypsilanti Community Schools, Ypsilanti District Library
FREE!!! Dinner Provided For 17 Years Old & Under



SUMMER DAY CAMP

Dates: Monday, June 23rd – Thursday, August 18th
Days & Times: Mondays – Thursdays, 9:00a.m. – 4:00p.m.
Location: Christian Love Fellowship, 1601 Stamford Rd.
Program: Safe, Structured, Supervised Setting That Includes Games, Crafts, Fitness, Sports, Education, Conflict Resolution, And More
FREE!!! Presented By Washtenaw County Parks & Recreation
Registration Is Limited. Call (734) 480-5502 For More Info.



MOVIES ON THE GREEN

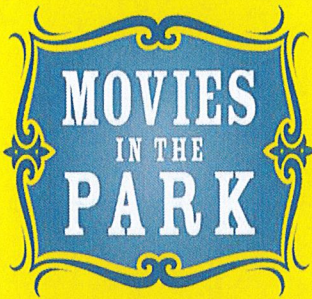
Date & Time: Saturday July 9th, Fun @ 8:00p.m., Movie @ 9:30p.m.
Location: Dixboro Village Green, 5221 Church Rd. Superior Twp.
Program: Family Event With Playground Games Beginning at 8:00p.m.
Followed By A Current Family Friendly Movie Shown On A 20' Screen.
Sponsored In-part by Dixboro Village Green & Dixboro United Methodist Church. Bring Your Picnic Blankets, Snacks and Coolers
FREE!!! (No Alcohol Allowed)



MOVIES IN THE PARK

Date & Time: Saturday August 13th, Fun @ 8:00p.m., Movie @ 9:00p.m.
Location: Oakbrook Park, 8460 Berkshire Dr. East of N. Prospect Rd.
Program: Family Event With Kickball And Games Beginning At 8:00p.m.
Followed By A Current Family Friendly Movie Shown On A 20' Screen.
Bring Your Picnic Blankets, Snacks And Coolers

FREE!!! (NO ALCOHOL)



MOVIES IN THE PARK

Date & Time: Saturday September 10th, Fun @ 7:30p.m., Movie @ 8:30p.m.
Location: Oakbrook Park, 8460 Berkshire Dr. east of N. Prospect Rd.
Program: Family Event With Playground Games Beginning At 8:00p.m.
Followed By A Current Family Friendly Movie Shown On A 20' Screen.
Bring Your Picnic Blankets, Snacks and Coolers

FREE!!! (NO ALCOHOL)



NATURE HUNT BINGO

Date & Time: Saturday October 8th, 1:00p.m. - 3:00p.m.
Rain Date & Time: Saturday October 15th, 1:00p.m. - 3:00p.m.
Location: Cherry Hill Nature Preserve
6515 Cherry Hill (1.8 Miles West of Prospect Rd.)
Program: A Family Nature Hunt Through The Woods & Trails Searching
For Birds, Animals, Leaves, and More.

FREE!!! All Ages!!! Bingo Cards, Snacks, & Prizes Provided



PUMPKIN CARVING/ARTS & CRAFTS

Date & Time: Saturday October 22nd, 11:00a.m. - 2:00p.m.
Rain Date & Time: Saturday October 29th, 11:00a.m. - 2:00p.m.
Location: Norfolk Park, 1815 Norfolk Ave.
Program: Pumpkin Carving And Arts & Crafts

FREE!!! Pumpkins, Crafts, And Snacks Provided

CHRISTMAS TREE LIGHTING

WITH SANTA CLAUS

Date & Time: Saturday December 3rd, 6:00p.m.
Location: Superior Township Hall, 3040 N. Prospect Rd.
Corner of N. Prospect & Cherry Hill
Program: Santa Will Light The Township Christmas Tree,
Ice Carving Demo, Old Fashioned Carolers, Warming Fires,
Hot Chocolate & Cookies, Pictures With Santa

FREE!!! FREE!!!



For Further Information, Please Call (734) 480-5502 Or Visit Us At:
website:www.superiortownship.org email:superiorparks@superior-twp.org

10B



David Borneman LLC

RestoringNatureWithFire.com

2854 Parkridge Drive • Ann Arbor • Michigan • 48103 • Office 734-994-3475 • Cell 734-845-0634 • Dave@Restoring-Nature.com

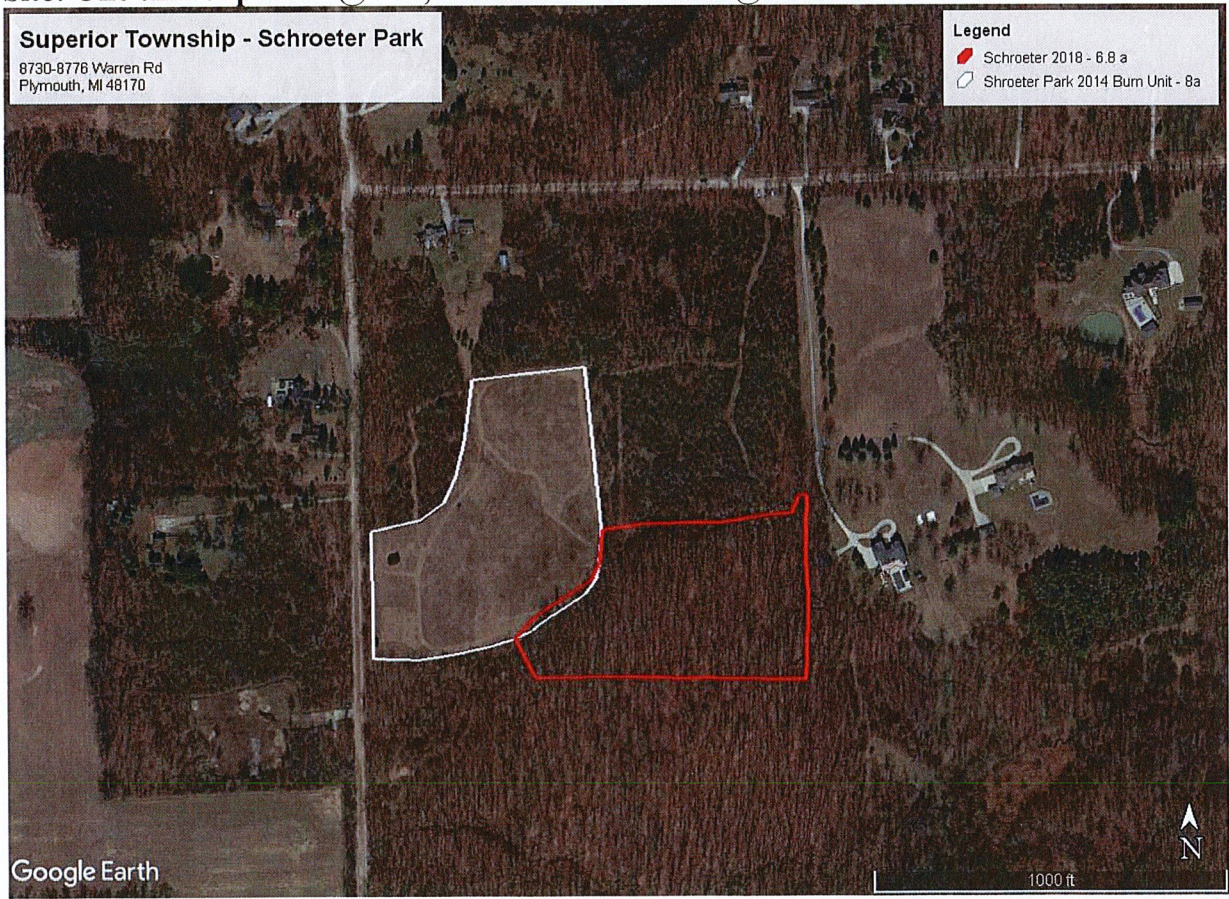
PRESCRIBED BURN PROPOSAL

Prepared for: Superior Township
Schroeter Park
8730-8776 Warren Road
Plymouth, MI 48170

Contact: Juan Bradford, jbradford@superior-twp.org, (734) 480-5500

Prepared by: David Borneman, LLC
2854 Parkridge Dr, Ann Arbor, MI 48103
Office: 734.994.3475, Cell: 734.845.0634
Dave@Restoring-Nature.com
FEIN: 37-1566550

Site: One unit of prairie @ ~8a, one unit of woodland @ ~6.8a.



Prescribed Burn Training:

National Wildfire Coordinating Group:

- Introduction to Incident Command System (S-130)
- Squad Boss Training (S-131)
- Beginning Wildland Fire Behavior (S-190) – Certified at Level I
- Crew Boss/Single Incident Command (S-230)
- Intermediate Wildland Fire Behavior (S-290) – Certified at Level I
- Introduction to Wildland Fire Behavior Calculations (S-390) – Certified at Level I
- Smoke Management Techniques (RX 410)
- Introduction to Fire Effects (RX-310)
- Applied Fire Effects (RX-510)

The Nature Conservancy and Tall Timbers Research Station:

Ecological Burning for Burn Leaders (10 days: equivalent to RX-300)

Insurance:

Commercial General Liability – \$1,000,000 per occurrence policy/\$2,000,000 general aggregate

Workers' Compensation - \$1,000,000

Commercial Auto Liability - \$1,000,000

Date of proposal/estimate: March 14, 2022

Cost: Prairie unit alone - \$2,500

Prairie and Woodland units together - \$4,300

Project Proposal:

My fee includes the following services:

- Site Preparation – If needed, using a leaf blower to remove leaves from trails serving as burn breaks around the perimeter of the burn unit.
- Coordinating with Fire Department.
- Posting “Caution-Smoke Ahead” signs on the nearest road(s) during the burn.
- Conducting the prescribed burn during Spring 2022, including provision of all necessary equipment and personnel required to conduct the burn.
 - All personnel assisting me will have prior burn experience and be adequately trained and briefed to participate in this burn safely.
 - All burn personnel will be equipped with the following personal protective equipment: fire retardant clothing, hardhat, face protectors, leather boots, and leather gloves.
 - I will provide one full-size, 4-wheel-drive truck equipped with a 300-gallon water tank and gasoline-powered water pump with hose; *Argo* ATV with mounted 65-gallon water tank, as needed, depending on site.
 - A full complement of additional hand tools and equipment will also be on hand to use as needed, including backpack water sprayers, drip torches, leaf blowers, rakes, two-way radios, cellular phone, etc.

Property owner is responsible for:

- Notifying neighbors and others in the immediate vicinity in advance about the upcoming burn, including phoning them on the day of the burn *if they request it*. (A sample neighbor notification letter is provided with this proposal.)
- Assisting with “PR” on-site during the burn, if possible.

Timing/Conditions:

I anticipate that the burn would happen sometime in the afternoon/early evening (between 12:00 noon and 7:00 pm.) Spring 2022.

Please remember that scheduling too far in advance is difficult because of the need for specific weather parameters during the burn. I would try to coordinate schedules with you a day or two in advance, and then confirm plans and exact times on the morning of the burn day.

Prescribed Fire Credentials:

- 32 years of professional experience conducting prescribed, ecological burns on thousands of acres.
- 27 years as Prescribed Burn Leader for City of Ann Arbor, Natural Area Preservation Division. In that capacity I coordinate the City’s entire Prescribed Burn Program, including leading burn trainings and overseeing a burn crew of up to 15 members.
- 21 years (over 500 burns on 10,000+ acres) as Private Contractor conducting prescribed burns in Michigan, Ohio, Indiana, and Illinois.
- 22 years on the Michigan Prescribed Fire Council’s Steering Committee. Past Chair.
- Certified as a Prescribed Burn Leader in Ohio and Illinois (no certification program exists in Michigan)

CHECK DISBURSEMENT REPORT FOR CHARTER TOWNSHIP OF SUPERIOR
 CHECK DATE FROM 03/01/2022 - 03/28/2022

Check Date	Bank	Check #	Invoice	Payee	Description	Account	Dept	Amount
Fund: 508 PARKS & RECREATION								
03/01/2022	GENL	45081	JAN-FEB 22	JUAN BRADFORD	MILEAGE REIMBURSEMENT 1/4-2/28/22	860.000	751	46.80
03/01/2022	GENL	45084	A-142334	PARKWAY SERVICES	PORTAJOHN @ FIREMAN'S PARK -FEB 202	801.000	755	120.00
03/01/2022	GENL	45085	FEB 22	PATRICK PIGOTT	CELL PHONE STIPEND -FEB 2022	850.000	754	50.00
03/01/2022	GENL	45091	3322 GBL	SUPERIOR TWP PAYROLL FUND	CASH TRANSFER 3/3/22 PAY	289.000	000	5,101.91
03/01/2022	GENL	45093	1640398041	WALMART	SHOP SUPPLIES	740.000	755	8.21
03/01/2022	GENL	45094	140796	YPSILANTI ACE HARDWARE	SNOW BLOWER REPAIR	930.000	755	237.98
			140758		SNOW BLOWER REPAIR	930.000	755	40.00
					CHECK GENL 45094 TOTAL FOR FU			<u>277.98</u>
03/08/2022	GENL	45098	79114093	WEX BANK	FUEL - FEBRUARY 2022	742.000	755	112.34
03/08/2022	GENL	45107	FEB 22-P	DTE ENERGY	ELECTRIC - PARKS BARN -FEB 22	920.000	755	16.05
03/15/2022	GENL	45146	2022-008	SUPERIOR TOWNSHIP CREDIT CARDZOOM	- FEBRUARY 2022	205.001	000	14.99
03/15/2022	GENL	45147	31722-G	SUPERIOR TWP PAYROLL FUND	CASH TRANSFER 3/17/22 PAYROLL	289.000	000	6,595.84
03/15/2022	GENL	45148	1-022522-02	SUPERIOR TWP UTILITY DEPARTME	CELL PHONE - BRADFORD	850.000	751	49.87
03/22/2022	GENL	45152	2164311	CARLISLE WORTMAN ASSOCIATES	2023 RECREATION PLAN	801.000	751	770.00
03/22/2022	GENL	45158	A-142768	PARKWAY SERVICES	PORTAJOHN @ FIREMAN'S PARK -MAR	202801.000	755	120.00
03/22/2022	GENL	45163	21-54151	SIGNS BY TOMORROW	EASTER EGG HUNT SIGNS	975.000	754	405.50

Total for fund 508 PARKS & RECREATION 13,689.49



GL NUMBER	DESCRIPTION	2022		YTD BALANCE 02/28/2022	ACTIVITY FOR MONTH 02/28/22	AVAILABLE BALANCE	% BGD USED	YTD BALANCE 02/28/2021
		ORIGINAL BUDGET	AMENDED BUDGET					
Fund 508 - PARKS & RECREATION								
Revenues								
Dept 000 - REVENUE								
508-000-588.000	GENERAL FUND CONTRIBUTION	311,451.00	311,451.00	0.00	0.00	311,451.00	0.00	50,396.70
508-000-604.000	REIMBURSEMENT FOR LABOR COSTS	15,000.00	15,000.00	81.68	81.68	14,918.32	0.54	81.68
508-000-663.000	INTEREST ON RESERVES INCOME	1,000.00	1,000.00	0.00	0.00	1,000.00	0.00	7.80
508-000-673.000	INSURANCE REIMBURSEMENTS INCOM	500.00	500.00	0.00	0.00	500.00	0.00	0.00
508-000-695.000	TENNIS LESSON FEES	2,000.00	2,000.00	0.00	0.00	2,000.00	0.00	0.00
508-000-696.000	DONATIONS	600.00	600.00	0.00	0.00	600.00	0.00	0.00
Total Dept 000 - REVENUE		330,551.00	330,551.00	81.68	81.68	330,469.32	0.02	50,486.18
TOTAL REVENUES								
330,551.00		330,551.00	330,551.00	81.68	81.68	330,469.32	0.02	50,486.18
Expenditures								
Dept 000 - REVENUE								
508-000-702.002	CONTROLLER SALARY	0.00	0.00	0.00	0.00	0.00	0.00	256.54
Total Dept 000 - REVENUE		0.00	0.00	0.00	0.00	0.00	0.00	256.54
Dept 751 - PARK & REC. ADMINISTRATION								
508-751-701.000	COMMISSION STIPENDS	9,057.00	9,057.00	1,744.25	1,240.00	7,312.75	19.26	1,259.37
508-751-702.000	SALARIES	39,867.00	39,867.00	6,358.72	3,292.00	33,508.28	15.95	5,954.80
508-751-702.002	CONTROLLER SALARY	6,216.00	6,216.00	956.24	471.83	5,259.76	15.38	626.07
508-751-710.000	TRAINING	1,000.00	1,000.00	0.00	0.00	1,000.00	0.00	0.00
508-751-717.000	TAXABLE BENEFITS	0.00	0.00	40.00	40.00	(40.00)	100.00	0.00
508-751-728.000	POSTAGE	100.00	100.00	0.00	0.00	100.00	0.00	0.00
508-751-740.000	OPERATING SUPPLIES	1,000.00	1,000.00	116.95	0.00	883.05	11.70	45.35
508-751-800.010	PROFESSIONAL SERVICES - AUDIT	1,100.00	1,100.00	0.00	0.00	1,100.00	0.00	0.00
508-751-801.000	PROFESSIONAL SERVICES - OTHER	17,000.00	17,000.00	240.69	40.35	16,759.31	1.42	216.56
508-751-850.000	TELECOMMUNICATIONS	750.00	750.00	99.74	49.87	650.26	13.30	99.98
508-751-851.000	INSURANCE & BONDS	10,000.00	10,000.00	0.00	0.00	10,000.00	0.00	1,498.10
508-751-860.000	TRANSPORTATION	1,200.00	1,200.00	46.80	46.80	1,153.20	3.90	39.20
508-751-900.000	PRINTING & PUBLISHING	3,000.00	3,000.00	0.00	0.00	3,000.00	0.00	0.00
508-751-930.000	REPAIR & MAINTENANCE	500.00	500.00	0.00	0.00	500.00	0.00	0.00
508-751-945.000	OFFICE RENT	6,000.00	6,000.00	0.00	0.00	6,000.00	0.00	0.00
508-751-958.000	MEMBERSHIPS & DUES	650.00	650.00	500.00	0.00	150.00	76.92	360.00
508-751-963.000	BANK FEES & CHARGES	300.00	300.00	0.00	0.00	300.00	0.00	1.68
508-751-981.000	EQUIPMENT UNDER \$5,000	1,000.00	1,000.00	0.00	0.00	1,000.00	0.00	0.00
508-751-999.000	MISCELLANEOUS EXPENSE	200.00	200.00	0.00	0.00	200.00	0.00	0.00
Total Dept 751 - PARK & REC. ADMINISTRATION		98,940.00	98,940.00	10,103.39	5,180.85	88,836.61	10.21	10,101.11
Dept 754 - RECREATION								
508-754-702.000	SALARIES	10,277.00	10,277.00	195.84	121.68	10,081.16	1.91	131.52
508-754-717.000	TAXABLE BENEFITS	200.00	200.00	0.00	0.00	200.00	0.00	0.00
508-754-740.000	OPERATING SUPPLIES	3,500.00	3,500.00	0.00	0.00	3,500.00	0.00	0.00
508-754-801.000	PROFESSIONAL SERVICES - OTHER	6,000.00	6,000.00	1,011.06	0.00	4,988.94	16.85	1,985.06
508-754-801.050	PROFESSIONAL SERVICES-TENNIS I	2,000.00	2,000.00	0.00	0.00	2,000.00	0.00	0.00
508-754-850.000	TELECOMMUNICATIONS	600.00	600.00	100.00	50.00	500.00	16.67	100.00
508-754-860.000	TRANSPORTATION	100.00	100.00	0.00	0.00	100.00	0.00	0.00
508-754-930.000	REPAIR & MAINTENANCE	500.00	500.00	0.00	0.00	500.00	0.00	0.00
508-754-975.000	SIGNAGE	2,073.00	2,073.00	0.00	0.00	2,073.00	0.00	0.00

12A

GL NUMBER	DESCRIPTION	2022		YTD BALANCE 02/28/2022	ACTIVITY FOR MONTH 02/28/22	AVAILABLE BALANCE	% BDGT USED	YTD BALANCE 02/28/2021
		ORIGINAL BUDGET	2022 AMENDED BUDGET					
Fund 508 - PARKS & RECREATION								
Expenditures								
Total Dept 754 - RECREATION		25,250.00	25,250.00	1,306.90	171.68	23,943.10	5.18	2,216.58
Dept 755 - PARK MAINTENANCE								
508-755-702.000	SALARIES	94,764.00	94,764.00	11,007.40	5,887.30	83,756.60	11.62	13,422.40
508-755-710.000	TRAINING	700.00	700.00	0.00	0.00	700.00	0.00	0.00
508-755-717.000	TAXABLE BENEFITS	3,047.00	3,047.00	3,263.13	0.00	(216.13)	107.09	4,807.52
508-755-740.000	OPERATING SUPPLIES	5,500.00	5,500.00	215.05	8.21	5,284.95	3.91	558.47
508-755-740.003	HERBICIDE (NON-SELECTIVE)	500.00	500.00	0.00	0.00	500.00	0.00	0.00
508-755-740.004	SAND-GRAVEL-BARK-SOIL	8,000.00	8,000.00	0.00	0.00	8,000.00	0.00	0.00
508-755-741.000	UNIFORMS	900.00	900.00	0.00	0.00	900.00	0.00	0.00
508-755-742.000	FUEL-LUBRICANTS	4,500.00	4,500.00	222.08	112.34	4,277.92	4.94	195.48
508-755-801.000	PROFESSIONAL SERVICES - OTHER	2,500.00	2,500.00	320.70	160.35	2,179.30	12.83	318.86
508-755-850.000	TELECOMMUNICATIONS	600.00	600.00	0.00	0.00	600.00	0.00	0.00
508-755-860.000	TRANSPORTATION	100.00	100.00	0.00	0.00	100.00	0.00	0.00
508-755-920.000	UTILITIES	850.00	850.00	33.10	16.05	816.90	3.89	55.56
508-755-930.000	REPAIR & MAINTENANCE	12,500.00	12,500.00	277.98	277.98	12,222.02	2.22	97.50
508-755-930.001	CONTROLLED BURNS	5,000.00	5,000.00	0.00	0.00	5,000.00	0.00	0.00
508-755-975.000	SIGNAGE	500.00	500.00	0.00	0.00	500.00	0.00	0.00
508-755-980.000	EQUIPMENT OVER \$5,000	35,000.00	35,000.00	0.00	0.00	35,000.00	0.00	0.00
508-755-981.000	EQUIPMENT UNDER \$5,000	1,500.00	1,500.00	0.00	0.00	1,500.00	0.00	0.00
Total Dept 755 - PARK MAINTENANCE		176,461.00	176,461.00	15,339.44	6,462.23	161,121.56	8.69	19,455.79
Dept 756 - PARK DEVELOPMENT/IMPROVEMENT								
508-756-951.000	PROJECTS	5,000.00	5,000.00	0.00	0.00	5,000.00	0.00	0.00
Total Dept 756 - PARK DEVELOPMENT/IMPROVEMENT		5,000.00	5,000.00	0.00	0.00	5,000.00	0.00	0.00
Dept 966 - UNALLOCATED EXPENSES								
508-966-715.000	FICA	12,578.00	12,578.00	1,802.80	845.55	10,775.20	14.33	2,024.08
508-966-858.000	PENSION	12,322.00	12,322.00	0.00	0.00	12,322.00	0.00	2,431.68
Total Dept 966 - UNALLOCATED EXPENSES		24,900.00	24,900.00	1,802.80	845.55	23,097.20	7.24	4,455.76
TOTAL EXPENDITURES		330,551.00	330,551.00	28,552.53	12,660.31	301,998.47	8.64	36,485.78
Fund 508 - PARKS & RECREATION:								
TOTAL REVENUES		330,551.00	330,551.00	81.68	81.68	330,469.32	0.02	50,486.18
TOTAL EXPENDITURES		330,551.00	330,551.00	28,552.53	12,660.31	301,998.47	8.64	36,485.78
NET OF REVENUES & EXPENDITURES		0.00	0.00	(28,470.85)	(12,578.63)	28,470.85	100.00	14,000.40

123

GL Number	Description	PERIOD ENDED 02/28/2021	PERIOD ENDED 02/28/2022
*** Assets ***			
Cash			
508-000-013.000	CHASE 5503 - DAILY OPERATING CHECKING	83,162.50	78,724.07
508-000-013.001	CHASE 5503 - GENERAL RESERVE	73,994.99	0.00
508-000-013.002	CHASE 5503 - ACCRUED ABSENCES	3,577.69	3,577.69
508-000-013.004	CHASE 5503 - GOVERNMENT T-BILLS	0.00	73,989.76
508-000-015.061	COMERICA - GOVERNMENT T-BILLS	0.00	401,485.48
508-000-017.000	COMERICA 1274 J-FUND - BUILDING RESERVE	401,738.33	0.00
Cash		562,473.51	557,777.00
Accounts Receivable			
Accounts Receivable		0.00	0.00
Other Assets			
508-000-123.050	PREPAID INSURANCE	6,304.80	7,676.88
Other Assets		6,304.80	7,676.88
Due From Other Funds			
Due From Other Funds		0.00	0.00
Total Assets		568,778.31	565,453.88
*** Liabilities ***			
Accounts Payable			
508-000-201.000	A/P - VENDORS	2,303.99	696.24
Accounts Payable		2,303.99	696.24
Liabilities-ST			
Liabilities-ST		0.00	0.00
Liabilities-LT (under 1 year)			
Liabilities-LT (under 1 year)		0.00	0.00
Other Liabilities			
Other Liabilities		0.00	0.00
Due To Other Funds			
508-000-205.001	DUE TO GENERAL FUND	47.49	295.23
508-000-285.000	DUE TO UTILITY FUND	49.99	0.00
508-000-289.000	DUE TO PAYROLL FUND	0.00	(2,116.30)
Due To Other Funds		97.48	(1,821.07)
Total Liabilities		2,401.47	(1,124.83)
*** Fund Balance ***			
Unassigned			
508-000-390.000	FUND BALANCE - UNDESIGNATED	136,915.02	136,460.42
Unassigned		136,915.02	136,460.42
Assigned			
508-000-393.010	FUND BALANCE - BUILDING RESERVE	401,730.53	401,730.53
508-000-393.050	FUND BALANCE - ACCRUED ABSENCES	11,180.89	11,635.49
Assigned		412,911.42	413,366.02

GL Number	Description	PERIOD ENDED 02/28/2021	PERIOD ENDED 02/28/2022
*** Fund Balance ***			
508-000-393.055	Restricted FUND BALANCE - SCHROETER	2,550.00	2,550.00
	Restricted	2,550.00	2,550.00
Total Fund Balance		552,376.44	552,376.44
Beginning Fund Balance		552,376.44	552,376.44
Net of Revenues VS Expenditures - 2021			42,673.12
Fund Balance Adjustments - 2021		0.00	
*2021 End FB/2022 Beg FB		595,049.56	
Net of Revenues VS Expenditures - Current Year		14,000.40	(28,470.85)
Fund Balance Adjustments		0.00	0.00
Ending Fund Balance		566,376.84	566,578.71
Total Liabilities And Fund Balance		568,778.31	565,453.88

* Year Not Closed