



# Annual Report



# Letter from the Health Officer

---

**I am so pleased to share this 2019 Annual Report from the Washtenaw County Health Department.**

This was a year of significant changes in leadership at the Health Department with a new Health Officer, Deputy Health Officer, and Medical Director. Yet through those changes, our dedicated staff continued to provide essential public health services to promote and protect the health of our residents.

As we share the breadth and impact of our services in this report, we also look ahead to strengthening our role as a trusted leader to improve health for all by advancing health equity practice, promoting environmental justice, and responding proactively to public health needs through innovative and community-driven strategies.

Addressing complex health issues in a rapidly changing environment requires collaboration and participation across multiple sectors that serve Washtenaw County as well as residents and community leaders. We will be healthy together.

Sincerely,  
Jimena Loveluck, MSW  
Health Officer  
Washtenaw County Health Department

The Washtenaw County Board of Commissioners appointed Jimena Loveluck (right) as Health Officer in June of 2019. Loveluck has spent her entire career in public health, including as Deputy Health Officer for the Health Department since 2017. Loveluck worked with former Health Officer Ellen Rabinowitz (left) until Rabinowitz retired in August after decades of public service to Washtenaw County.



*“Jimena will bring a strong vision for improving health for all in her new role,” says Rabinowitz. “Jimena has been working in this community for years. She is deeply respected by partners in our community and held in high esteem by our staff.”*

*“I have seen firsthand the skill and dedication Ellen has brought every day to her work at the health department,” says Loveluck. “We are also fortunate to have a stellar team of public health professionals who work tirelessly to promote health for all in Washtenaw County. I have learned so much from her and look forward to building upon the solid foundation she has established.”*





Washtenaw County  
**Health Department**  
*healthy together*

## Our Mission

To assure, in partnership with the **community**, the conditions necessary for people to live **healthy lives** through **prevention and protection** programs.

## Our Vision

A healthy community in which **every** resident enjoys the **best possible** state of **health and well-being**.

## Our Core Values

- We will emphasize **prevention** to keep our community healthy and safe
- We will lead the development of effective public health **interventions** in partnership with the community
- We will promote **social justice** and reduce inequities affecting the health of all in Washtenaw County
- We will abide by **ethical** principles, take responsibility for our commitments, and use our resources wisely

## Our Strategic Priorities

- Building **equitable community-centered engagement** practices
- Advocating for and maximizing resources for **community impact**
- Making **data** matter to address current and emerging issues
- Strengthening and supporting an **engaged workforce**

## Our Board

The Washtenaw County Board of Health oversees our programs and services and advises the Washtenaw County Board of Commissioners on health issues, health priorities, and potential solutions. In 2019, they approved the [2020-2024 strategic plan](#). Priorities of the strategic plan include building equitable practices, maximizing resources for community impact, making data matter, and strengthening an engaged workforce.



# 2019

## Public Health Programs Impact



1,636

### Maternal Infant Health Program Home Visits

to support healthy pregnancies and a healthy first year for babies.



387

HIV Screenings

1,121

STD Screenings



2,617

Immunizations

700



Immunization Waiver Education Sessions

234

Blood Lead Tests

298

TB Skin and Blood Tests



44,439

Hearing and Vision Screenings

+ 2,944 referrals



3,009

Dental Clinic Patients

+ 7,131 Washtenaw County Dental Clinic office visits



206

Michigan Tobacco Quitline Calls

by Washtenaw County residents. The Health Department promoted the Quitline frequently.

1,411



Children's Special Health Care Services Clients



4,445

WIC Clients Each Month

received food and nutrition education. WIC clients include pregnant women, infants and children up to age five.

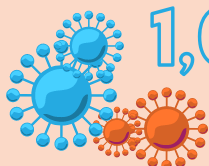
WIC families spent **\$208,753** WIC food dollars at Washtenaw County stores.



101

Wise Choices Clients

Received free health screenings and/or coaching



1,033

Investigations of Reportable Diseases

30

Disease Clusters

Epidemiologists and nurses followed up on every disease cluster and case of reportable disease.

402



Animal Bite Investigations

131 animals were tested for rabies. 3 bats tested positive.



\$110,000

Distributed in Healthy Food and Farmers Market Coupons

through Community Health Promotion Programs

Healthy food distributions in partnership with Food Gatherers provided an average of 90 households with free, healthy groceries each month, as well as 2 extra emergency distributions in February (equivalent of over \$70,000 worth of food and over 36,000 meals).

Over \$33,000 was spent on fruits and vegetables at farmers markets by 441 patients from 13 local health clinics and agencies serving low-income individuals through Prescription for Health.

395 Senior Project Fresh participants spent nearly \$6,500 of farmers market coupons.

# 2019

## Environmental Health Programs Impact



3,055



### Restaurant Inspections

5,673 Food Code Violations  
253 Temporary Food Inspections  
150 Food-Related Complaints  
79 Foodborne Illness Investigations  
1,051 restaurant inspections with ZERO critical violations



97

### Day Care Inspections

146

### Homes with Arsenic Mitigated



417

### Sewage Permits



343

### Pollution Prevention Inspections



381

### Well Permits

43

### Body Art Facility Inspections



1,135

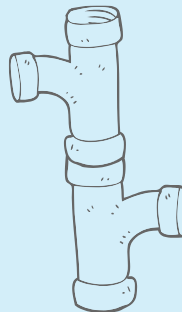
### Property Water Supplies & Wastewater Disposal Systems Evaluated

through our property transfer regulation (Time of Sale) program.

443



### Radon Test Kits Distributed



1,559

### Onsite Wastewater Systems Evaluated / Permitted

180

### Housing Complaints

311

### Swimming Pool Inspections



309

### Soil Evaluations

to determine soil suitability for future septic system installation.

6,791

### Drinking Water Tests



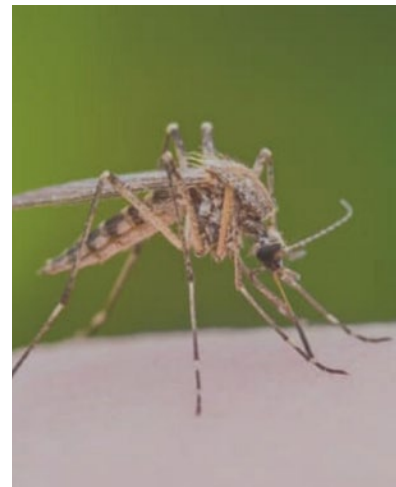


# Urgent & Emergent Issues

## EEE

Eastern Equine Encephalitis, or EEE, is one of the most dangerous mosquito-borne diseases in the United States, with a 33 percent fatality rate in people who become ill. Typically, 5-10 human cases of EEE are reported in the United States each year. In 2019, Michigan had 10 human cases resulting in 4 fatalities, as well as 39 animal cases.

Although there were no confirmed human or animal cases of EEE in Washtenaw County in 2019, there was a case in a horse just north of us in Livingston County. A small portion of Northern Washtenaw County received aerial treatment on Oct. 5 to control for mosquitoes that carry EEE. The product the Michigan Department of Health and Human Services used for the spraying is labeled for public health use over residential areas and is approved for use over organic crops. The Health Department also held an informational meeting on EEE and aerial spraying on Oct. 3 in Webster Township.



## Measles

In 2019, the United States saw the greatest number of measles cases since 1992. The Michigan Department of Health and Human Services confirmed 46 measles cases during the spring of 2019, primarily in Southeast Michigan.

In Washtenaw County, one case was confirmed in an international traveler on April 12. There were a number of potential public exposure sites, and the Washtenaw County Health Department shared this information widely. In addition, between March 27 and May 20, staff ruled out 22 suspect cases. One of these cases involved a daycare where unvaccinated infants and others had to be kept away after their exposure to prevent any further spread of illness. With each possible case, the Health Department must coordinate testing, information, and needed isolation with providers, labs, and state authorities. We also must communicate directly with individuals, families, and local worksites or facilities where exposures may have occurred.

## Opioid Use

Some disasters rush in like a tornado with immediate and obvious destruction. The opioid epidemic, instead, is more like fungus that slowly attacks trees, eventually decimating the forest. This is the focus of a 2019 report by the Washtenaw County Health Department on the opioid epidemic that continues to affect Washtenaw County and the entire country. Read [the "Healing Forest" report](#), which highlights themes from 48 conversations on the local opioid crisis. The Health Department also supported the Washtenaw Health Initiative's 2019 Opioid Summit and started work on a [new opioid awareness media campaign](#).

There were 62 opioid-related deaths among Washtenaw County residents in 2019, a decrease of over 20 percent compared to 2018. Improved access to naloxone has likely contributed to this decrease in deaths. An estimated 2,500 naloxone kits were distributed by public and non-profit agencies in Washtenaw County in 2019.

# Focused Messages



823,828

## Social Media Impressions

+ 70,098 social media engagements and 1,316 new followers



129,800

## Website Visits

+ 251,874 website page views



## Medical Marijuana

In 2019, we launched a medical marijuana education and safety campaign with designated funding from the Michigan Department of Health and Human Services. Messages included information on locking up your supply and not driving while using. We held a Cannabis 101 panel discussion for over 125 medical professionals. 10 billboards had a reach of over 2.5 million. We coordinated efforts with at least 17 local organizations to complete the project.

## Hepatitis A

In 2018 and 2019, our #StopHepA campaign had at least 11.5 million impressions through billboards, bus ads, Grindr ads, news outlet ads, movie theater ads, social media, and printed materials. Key messages encouraged vaccination and handwashing, with the help of a poop emoji mascot. The campaign also had a national reach – communications staff received calls and requests for materials from health departments across the country, from Florida to Alaska. The campaign was funded with a grant from the Michigan Department of Health and Human Services.



## Vaping



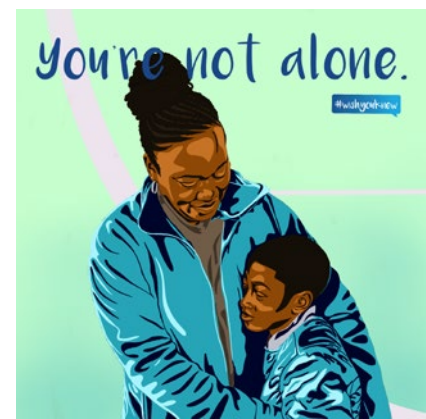
#KnowVaping Instagram and Facebook ads had over 7,000 impressions. Messaging about vaping facts and quitting resources were developed based on focus groups with young people.

## Youth Mental Health

We teamed up with Washtenaw County Community Mental Health in the spring of 2019 to design a campaign addressing community concerns around youth mental health and reducing stigma.

Driven by dozens of community conversations and a survey of 250 residents, the #wishyouknew campaign aims to spark honest and supportive conversations about mental health between youth and adults. The @wishyouknewwashtenaw Instagram page launched in Nov. 2019 and had around 80,000 impressions in its first month.

The #wishyouknew campaign is funded by the Washtenaw County Mental Health and Public Safety Preservation Millage. Learn more at [washtenaw.org/wishyouknew](https://washtenaw.org/wishyouknew).





# Play Here: Play Together

The Washtenaw County Health Department was thrilled to be a winner of the 2019 KaBOOM! Play Everywhere Challenge. The Play Everywhere Challenge is offered by KaBOOM!, the national non-profit dedicated to giving all kids the childhood they deserve through great, safe places to play, and supported by the Ralph C. Wilson, Jr. Foundation.

In an effort to make our Human Services Building more welcoming, and to help families claim and play in the space, the project, named Play Here: Play Together, created a bright, interactive play space promoting physical activity and health. The goal was to transform the way we all think about and interact with our public space and services.

In August 2019, we welcomed about 700 hundred community members to our new space with a block party. The party featured a ribbon cutting for the new play space, as well as food trucks, vaccines, education, many community partners, and activities for the whole family.

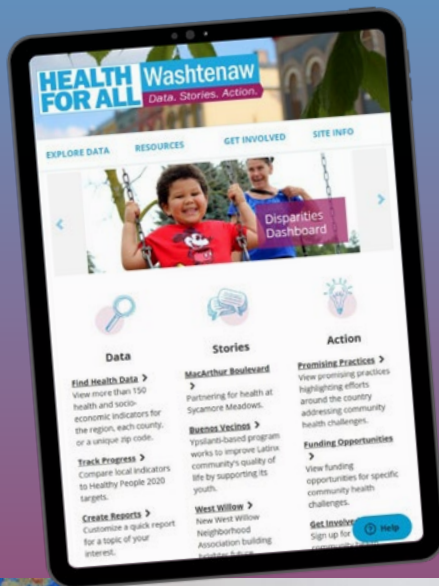
The Health Department worked with many partners on the Play Here: Play Together project including the Washtenaw County Parks and Recreation Commission, Office of Community and Economic Development and Community Mental Health, the City of Ypsilanti, and County administration and facilities.



**Watch the transformation**



# Health for All: Data, Stories, Action



The Washtenaw County Health Department launched a new website in Nov. 2019 that holds interactive data on hundreds of factors related to community health. [www.healthforallwashtenaw.org](http://www.healthforallwashtenaw.org) is a central location for information, stories, and action items on what impacts our health – think of it as an online health record for all of Washtenaw County.

The new website is also home to information on the Health Department's recently formed Health for All Steering Committee. The steering committee was created this year to prioritize public health issues and take action to improve conditions that support health and well-being. The committee is made up of community members, local health system and hospital representatives, and other local organizational representatives.



## Planning for a Pandemic

Our emergency preparedness program uses Whole Community Inclusion planning. This means we look broadly at risk and understand that the vulnerability of individuals, groups, or our entire community may change based on the specific event or health threat. One of the areas staff focused on in 2019 was the mental health aspect of preparing for disasters. Washtenaw County is fortunate to have expanded access to services through the Washtenaw County Mental Health and Public Safety Preservation Millage. Anyone can call the Washtenaw County Community Mental Health CARES team at 734-544-3050 or text SHARE to the Crisis Text Line at 741741. Support and resources for ANY mental health question are available 24/7.

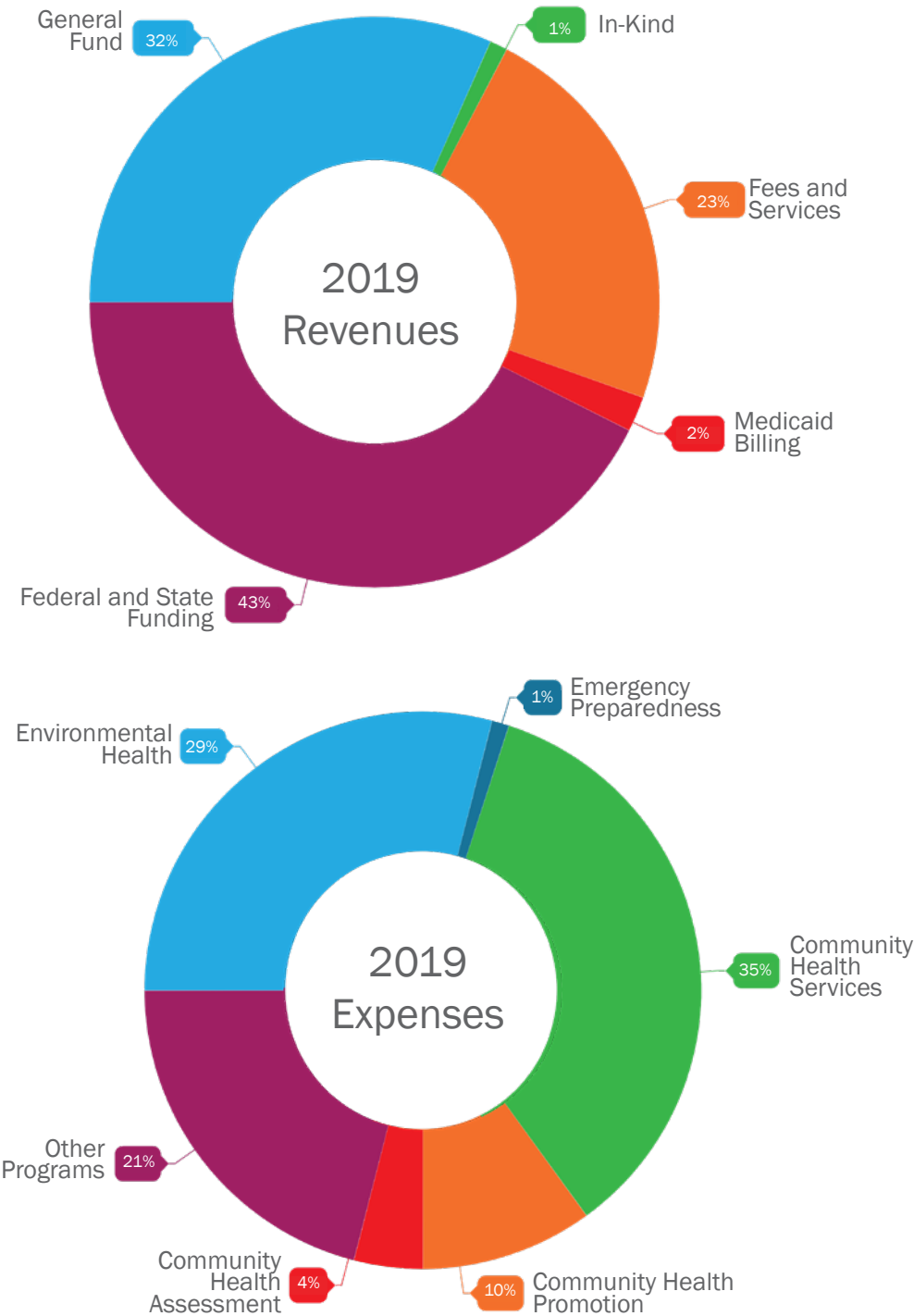
The Health Department emergency preparedness program maintains preparedness plans, including pandemic response plans, medication, and vaccine dispensing, and restructuring staff roles during an emergency. Emergency volunteers, with or without medical training, are recruited through the Washtenaw County Medical Reserve Corps. [Visit our website to volunteer.](#)

On December 31, 2019, the World Health Organization China Country Office was informed of a pneumonia of unknown cause, detected in the city of Wuhan in Hubei province, China. This virus was later identified as a coronavirus and named COVID-19.

# Financials

Our operating budget was \$15,477,536 for the fiscal year ending September 30, 2019.

These charts reflect audited figures. “Other programs” include agreements for the Washtenaw County Dental Clinic, Washtenaw County Medical Examiner, Washtenaw Health Plan, Indigent Transport, and Medicaid Outreach and Advocacy.



## Building Healthy Communities

Our Building Healthy Communities program awarded over \$130,000 in grant funding to 9 community projects that are helping build foundations for residents to live healthy lifestyles.

Funded projects ranged from an inclusive and accessible bicycling program to a farm share program that provided local produce to families facing food insecurity.



As a result of the Building Healthy Communities award to the Farm at St. Joe’s, Saint Joseph Mercy Ann Arbor was able to provide 35 food insecure families with free local produce every week from July-September

The Michigan Department of Health and Human Services funds Building Healthy Communities as part of Getting to the Heart of the Matter in Michigan.



# Contact Us

---



## Washtenaw County Health Department

Human Services Building

555 Towner Street

Ypsilanti, MI 48198

Phone: 734-544-6700

Fax: 734-544-6705

[www.washtenaw.org/health](http://www.washtenaw.org/health)



## Environmental Health Division

Western Service Center

705 North Zeeb Road

Ann Arbor, MI 48103

Phone: 734-222-3800

Fax: 734-222-3930

[www.washtenaw.org/envhealth](http://www.washtenaw.org/envhealth)



## Washtenaw County Dental Clinic

Haab Health Building

111 North Huron Street

Ypsilanti, MI 48197

Phone: 734-480-4250

Register: 877-313-6232

[www.washtenaw.org/smile](http://www.washtenaw.org/smile)

# Connect With Us

---



@wcpublichealth