

**SUPERIOR CHARTER TOWNSHIP
PARKS & RECREATION COMMISSION MEETING**

**The Superior Township Parks & Recreation Commission
Regular**

SEPTEMBER 2017 meeting

will be held

MONDAY, SEPTEMBER 25, 2017 @ 6:30 p.m.

at

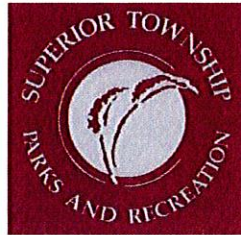
OLD TOWNSHIP HALL



(Corner of Cherry Hill & Prospect)

For additional info call: (734) 480-5502

or email: superiorparks@superior-twp.org



**SUPERIOR CHARTER TOWNSHIP
PARKS & RECREATION COMMISSION MEETING**

**Superior Township Parks & Recreation Commission
Regular**

SEPTEMBER 2017 meeting

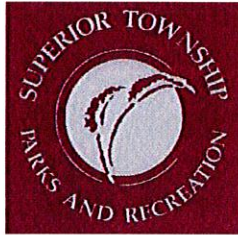
will be held

MONDAY, SEPTEMBER 25, 2017 @ 6:30 p.m.

at

OLD TOWNSHIP HALL

Dave Buterbaugh	Marion Morris
Paula Jefferson	Nahid Sanii-Yahyai
Martha Kern-Boprie	Patrick Pigott
Terry Lee Lansing	Alex Williams
Sandi Lopez	Bernedia Word



**PARKS & RECREATION COMMISSION REGULAR MEETING
OLD TOWNSHIP HALL
SEPTEMBER 25, 2017 @ 6:30 P.M.
AGENDA**

- 1) CALL TO ORDER**
- 2) ROLL CALL**
- 3) FLAG SALUTE**
- 4) AGENDA APPROVAL**
- 5) PRIOR MEETING MINUTES APPROVAL**
 - A) August 28, 2017- Regular Meeting
 - B) September 7, 2017- Special Meeting
- 6) CITIZEN PARTICIPATION**
- 7) REPORTS**
 - A) Chairperson
 - B) Administrator
 - C) Board Liaison
 - D) Board Meeting Attendee
 - E) Park Steward
 - F) Safety
- 8) COMMUNICATIONS**
 - A) Educational Info: ADA Requirements for Playgrounds (Made Simple)
 - B) Special Event / Dixboro Market Attendance Calendar (Fall/Winter)
 - C) Dixboro Church First Responders Thank You Picnic
 - D) Memo from Ellen Kurath RE: Weeds in Township Parks
- 9) OLD BUSINESS**
 - A) 2017 Park Development/Improvements Update
 - Approve Oakbrook Sidewalk Bid
- 10) NEW BUSINESS**
- 11) BILLS FOR PAYMENT**
 - A) August 23 – September 19, 2017
- 12) FINANCIAL STATEMENTS**
 - A) August 2017 Revenue & Expenditure Report
 - B) Kickball Day 2017 Expenditures
- 13) PLEAS AND PETITIONS**
- 14) ADJOURNMENT**

Next Meeting Date: Monday, October 23, 2017 @ 6:30pm

Superior Township Park Commission
Regular Meeting
August 28, 2017

Proposed Minutes

- I. Call to Order
The meeting was called to order by Chair Marion Morris at 6:35 pm.

- II. Roll Call
Park Commissioners present: Marion Morris, Paula Jefferson, Sandi Lopez, Bernedia Word, Terry Lee Lansing, Nahid Sani-Yahyai, Martha Kern-Boprie

Park Commissioners absent: none

Others present: Juan Bradford, Park Administrator; David Buterbaugh, Maintenance Supervisor; Patrick Pigott, Recreation Coordinator

- III. Flag Salute
Chair Marion Morris led those assembled in the Pledge of Allegiance to the flag.

- IV. Agenda Approval
It was moved by Nahid Sani-Yahyai and supported by Terry Lee Lansing to approve the agenda as drafted. The motion carried.

- V. Prior Meeting Minutes Approval
It was moved by Nahid Sani-Yahyai and supported by Terry Lee Lansing to approve the minutes of 7/24/17 as drafted. The motion carried.

- VI. Citizen Participation
None

- VII. Reports
 - A. Chairperson
Chair Marion Morris reported that she and Nahid Sani-Yahyai attended the kickball tournament held at the end of the Come Out and Play program. The tournament was well attended and well run. Each child received a kickball and backpack filled with school supplies.

We have a lot of books for our book give-away. These books should be sorted for distribution to other groups as well as give-away at Park Commission events. Sandi Lopez and Terry Lee Lansing offered to sort the books.

2018 Budget Development – Marion, Sandi Lopez and Juan Bradford have drafted a budget for the Park Fund in 2018. A special Park Commission meeting has been scheduled on September 7 at 6:30 pm for review of that budget.

Rick Collman, Park Steward sent communication about resources needed by the Boy Scouts for Park Projects.

 - B. Park Administrator
Juan Bradford submitted a written report. The Come Out and Play program was better attended this year. Starting the program earlier in the season, and publicity by Washtenaw County Parks contributed to better participation.

C. Board Liaison

No report, as Trustee Williams was out of town on business.

D. Board Meeting Attendee

Sandi Lopez attended the August Township Board meeting. During Citizen Participation Michael Phillips and his attorney spoke about a request they made for township board approval of a medical marijuana growing and processing facility in Superior Township on an 8 acre parcel. The parcel is zoned A-1. Mr. Phillips stated 50% of the marijuana product this facility produces will not have a psychotropic effect.

Supervisor's Report: RNC will open offices in Dixboro. Sava Restaurant will eventually occupy the building previously occupied by Roger Monk's restaurant. Jason Gold operates a folk school, and wishes to operate in the Staebler County Park. Some of the neighboring property owners have expressed resistance to the folk school.

Mr. Petry, Township Ordinance Officer broke his ankle. 2018 budgets are due at the 9/18/17 township board meeting. The County Clean-up Day will occur in October. Ypsilanti Community Utility Authority increased water and sewer rates. Several resolutions were adopted. Staff changes in the Utility Department were approved.

E. Park Steward

David Buterbaugh, Maintenance Supervisor, requested direct contact with Rick Collman, Park Steward. Juan Bradford offered to facilitate a meeting between David and Rick. Marion Morris suggested that Juan forward all email and other communication from Rick Collman to David Buterbaugh.

F. Safety

No big issues. David Buterbaugh noted that the new Kubota stopped working. The gear box was out of oil. Wolverine (vendor) stated they would repair the machine, because it appeared the machine had been delivered without oil.

VIII. Communications

A. Educational Information: Get Your Play on!

B. Harvest Moon Safety Improvements

C. Oakbrook Park Safety Improvements

It was moved by Sandi Lopez and supported by Nahid Sanii-Yahyai to receive the communications. During discussion on the motion Marion Morris asked if findings in playground improvements were complete. Juan Bradford responded that findings were not complete yet, but would be complete by the end of the 2017 season. The motion carried.

IX. Old Business

A. 2017 Park Development/Improvements Update

1. Approve Engineered Wood Fiber bid

It was moved by Martha Kern-Boprie and supported by Terry Lee Lansing to approve the bid from Superior Ground Cover of \$6,210.00 for 230 cubic yards of Engineered Wood Fiber (EWF) installed at all play structures. The motion carried.

2. Approve Oakbrook Park 2-bay swing bid

It was moved by Martha Kern-Boprie and supported by Nahid Sanii-Yahyai to approve the bid from Playworld Midstates of \$6,464.00 to remove the single-bay swing set in Oakbrook Park and install a new 2-bay swing set, expand use zones and relocate two spring animals. The motion carried.

X. New Business

A. 2018 Budget Preparation

Chair Marion Morris asked each park commissioner for 2018 budget suggestions. Marion: playground equipment in Community Park and Fireman's Park. Additional seasonal maintenance employee to focus on plantings. Tree replacement in parks. Erosion control in Cherry Hill Nature Preserve (CHNP). This erosion control will cost approximately \$5,000 to \$6,000.

Sandi: Review and address staff salaries to ensure they are fair and competitive.

Martha: An additional recreation event in August.

Nahid: organic garden, teach children how to grow and value organic gardening. This could involve a collaboration with Growing Hope.

Paula, Bernedia, Martha and Terry Lee will send in ideas later.

Terry Lee asked why there are few water fountains in the parks. Staff responded that vandalism has damaged many, so the fountains are being removed.

Nahid also suggested a movie night for children.

Juan Bradford suggested a kiosk in each park displaying maps, flyers and ordinances.

B. Fall Special Events Sign-up

Park Commissioners volunteered to assist at the following recreation events during the balance of 2017.

Kickball 9/09/17 11:00 am – 2:00 pm Oakbrook Park

Martha Kern-Boprie

Paula Jefferson

Nahid Sanii-Yahyai

Dixboro Farmers Market 9/29/17 3:00 – 7:00 pm Dixboro Green

Terry Lee Lansing

Pumpkin Carving 10/21/17 11:00 am – 2:00 pm Norfolk Park

Martha Kern-Boprie

Terry Lee Lansing

Sandi Lopez

Nahid Sanii-Yahyai

Dixboro Farmer Market: Trunk or Treat! 10/27/17 3:00 – 7:00 pm Dixboro Green

Terry Lee Lansing

Bernedia Word

Paula Jefferson

Christmas Tree Lighting with Santa Claus 12/02/17 6:00 – 8:00 pm Twp Hall grounds

Bernedia Word

Martha Kern-Boprie

Marion Morris

Nahid Sanii-Yahyai

Sandi Lopez

C. Brush Hog Update

David Buterbaugh noted that all parks, especially CHNP have to be thoroughly cleared of brush each year. Presently there are "walls" of brush to be cleared, and this may be more than present staff and equipment can remove. Controlled burns and/or goats may be needed in 2018 to clear some of this brush.

D. Special Budget Park Commission Meeting on September 7, 2017
Chair Marion Morris announced there will be a special park commission meeting on Thursday, September 7 at 6:30 pm to review the draft 2018 Park Budget.

XI. Bills for Payment

It was moved by Terry Lee Lansing and supported by Martha Kern-Boprie to pay the bills totaling \$24,648.62. The motion carried.

XII. Financial Statements

A. July 2017 Revenue and Expenditure Report

It was moved by Sandi Lopez and supported by Paula Jefferson to receive the July 2017 Revenue and Expenditure Report. The motion carried.

XIII. Pleas and Petitions

Nahid Sanii-Yahyai has attended seminars on comparing analog electric meters to "smart" meters. Concerns have been raised about these "smart" meters causing health hazards and fire risk. Additional concerns have been raised that these "smart" meters have the potential to observe and record the personal behavior of electricity customers.

XIV. Adjournment

It was moved by Nahid Sanii-Yahyai and supported by Marion Morris to adjourn the meeting at 8:07 pm. The motion carried.

Submitted by,
Martha Kern-Boprie, Park Commissioner and Secretary

53

Superior Charter Township Park Commission
Special Budget Meeting
September 7, 2017

Proposed Minutes

I. Call to Order

Chair Marion Morris called the meeting to order at 6:35 pm.

II. Roll Call

Park Commissioners present: Marion Morris, Bernedia Word, Terry Lee Lansing, Sandi Lopez, Paula Jefferson, Nahid Sanii-Yahyai, Martha Kern-Boprie

Park Commissioners absent: none

Others present: Juan Bradford, Park Administrator

III. Flag Salute

Chair Morris led those assembled in the Pledge of Allegiance to the flag.

IV. Agenda Approval

It was moved by Nahid Sanii-Yahyai and supported by Terry Lee Lansing to approve the agenda as drafted. The motion carried.

V. New Business

A. 2018 Parks & Recreation Budget

1. Proposed Budget

Park Commissioners reviewed the proposed budget presented by Juan Bradford, Marion Morris and Sandi Lopez. Detailed questions were asked about the various line items, and how the budget would facilitate program and park maintenance goals the various commissioners sought.

2. Proposed Park Development/Improvements

The 2018 proposed Park Development/Improvement Budget is \$80,000

<u>Park</u>	<u>Project</u>	<u>Expenditure</u>
Fireman's	Additional Play Equipment	\$10,000
Community	Replace Playstructure	\$30,000
Oakbrook	Information Kiosk	\$ 1,250
Community	Information Kiosk	\$ 1,250
Cherry Hill Nature Preserve	Trail Erosion Mitigation	\$ 7,500
Cherry Hill Nature Preserve	Boardwalk Extension Phase 4	\$10,000
Cherry Hill Nature Preserve	Brush Clearing	\$ 7,500
Various	Tree Planting	<u>\$ 5,000</u>
		\$72,500

3. Park Maintenance Staff Recommendations

The 2018 proposed Maintenance Equipment under \$5,000 budget is \$5,000

Tires (double Toro trailer)	5 @ \$200.00 each	\$1,000.00
Back Pack Blower	replace 2007 model	\$ 400.00
Pole Saw		\$ 600.00
Pruning Shears	3 sets ratchet \$45.00 each	\$ 150.00
Lithium Batteries	2 each Ryobi Tools	\$ 99.00
Power Edger		\$ 300.00
Weed Whip		\$ 270.00
Power Mower (push)		\$ 375.00

Office Chairs (small for lunch room)	3 at \$40.00 each	\$ 120.00
Air Hose Reel	Industrial for Compressor	\$ 300.00
Bench Vises	2 at \$90.00 each	\$ 180.00
Brooms, Shovels, Rakes	2 each at approximately \$18.00	\$ 110.00
Die Grinder	Electric	\$ 300.00
Safety Equipment	goggles, muffs, hard hats, etc	<u>\$ 300.00</u>
		\$4,644.00

Recreation Equipment		
Waterproof storage containers	6 at \$15.00 each	\$ 90.00
Small propane grill		<u>\$ 200.00</u>
		\$ 290.00

Maintenance Equipment total		\$4,644.00
Recreation Equipment total		<u>\$ 290.00</u>
Equipment total		\$4,734.00

Staff also request an increase in uniform allowance from \$600.00 to \$1,000.00.

A member of the park staff may seek education at the MSU Extension as a horticulturalist. The Park Department would pay for training and mileage to attend the classes.

It was moved by Martha Kern-Boprie and supported by Paula Jefferson to recommend to the Township Board approval of the proposed 2018 Park Fund Budget:

Revenue \$338,089.00

Expense

Administration	\$ 58,801.00
Recreation	\$ 15,544.00
Park Maintenance	\$162,578.00
Park Development/Improvement	<u>\$ 80,000.00</u>
	\$338,089.00

A roll call vote was taken on the motion.

<u>Commissioner</u>	<u>Yes</u>	<u>No</u>	<u>Absent</u>	<u>Abstain</u>
Morris	X			
Lansing	X			
Jefferson	X			
Lopez	X			
Word	X			
Sanii-Yahyai	X			
Kern-Boprie	X			

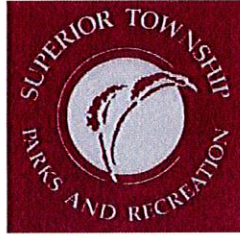
The motion carried.

The Township Board will discuss the 2018 Budget at its 9/18/17 meeting.

VI. Adjournment

It was moved by Martha Kern-Boprie and supported by Sandi Lopez to adjourn at 7:15 pm. The motion carried.

Submitted by,
Martha Kern-Boprie, Park Commissioner and Secretary



73

**ADMINISTRATOR REPORT
SEPTEMBER 25, 2017**

- Board of Trustees Meeting Attendee
Next Meeting: October 16, 2017 @ 7:00pm – Commissioner Kern-Boprie
- We presented our 2017 accomplishments and 2018 budget requests' to the Township Board at its 9/18/17 regular meeting. There was a lot of good conversation from both sides. I requested that the township provide half of the funding for the 2018 Park Developments/Improvements.
- The Old Business portion of the agenda includes bids for the installation of 260' of sidewalk at Oakbrook Park. This sidewalk will go from the street sidewalk to the play structure and would meet ADA requirements. This improvement has been previously approved by the Commission and will be paid for from the 2017 Parks Development/Improvement budget.
- Engineered Wood Fiber (EWF) has been installed under and around all playground equipment at Harvest Moon Park, Fireman's Park, and Norfolk Park. All other playground safety improvements are ongoing and will be completed by the end of the season.
- Brush hogging has begun in the required areas and will continue throughout the next month until all areas are completed.

Respectfully submitted,

A handwritten signature in black ink, appearing to read "Juan Bradford", is written over the typed name. The signature is fluid and cursive, with a large, sweeping flourish that extends upwards and to the right.

Juan Bradford

Juan Bradford

7 E.

From: Rick Collman <rick@thecollmans.com>
Sent: Saturday, September 9, 2017 2:22 PM
To: Kay & Carl Williams; Juan Bradford; petermorris201@comcast.net
Subject: Superior Twp Park Steward Log/Rpt
Attachments: CherryHill Pet Memorial.jpg

I will miss attending this month's meeting as I will be ~~attempting to hike~~ hiking The Ridgeway, an 87 mile long distance path in England. It's a hike that features large stone circles, Neolithic forts and burial grounds and many opportunities for the consumption of ale. It should be tough.

Below is my recent park log. Also attached is a picture of the 'pet memorials'. Please contact me if you've any questions.

Date	Park	Dist	Weather	Temp	Condition	Comments
9/7/17	Cherry Hill	2.1	Sunny	70	Dry	<ul style="list-style-type: none">●Walked the circuit with John C. who was dismayed by the amount of overgrowth, particularly in the meadow area. A good brush hogging will be appreciated by all.●John pointed out many items of horticultural interest, as well as some of his vision for the future of the preserve.●John is continuing to cull documents he has gathered over the years, before passing them over for safekeeping.●Also, in terms of who does what, as Steward Emeritus intends to continue to carry the ball on the boardwalk project.
9/2/17	Cherry Hill	3.1	Cloudy	69	Dry	<ul style="list-style-type: none">●Met friend of the park, Jack G., and he mentioned a pet memorial in the park. Probably an inappropriate use of the park, and as one plaque is broken. Location: From main entrance, take path down and then up High Bluff Trail, hill, at top is a small path at right. (See attached picture.)●Met another friend of the park Joe C as he was enjoying peace of meadow in late afternoon.●There were 2-3 cars in the lot.
8/23/17	Schroeter	1.1	Cloudy	75	Dry	Lovely at dusk with threatening clouds. 1 other car in lot.
8/23/17	Cherry Hill		Cloudy	75	Dry	Fall in the air. 8pm. 3 cars in lot. Obstacles had been cleared.
8/16/17	Cherry Hill	2.72	Sunny	85	Dry	Walked all trails +. Thanks to Parks Dept for trimming trails. Not just mowing, but cutting back on the side growth. Without that work several trails would become tunnels.
8/8/17	Cherry Hill	2.2	Sunny	85	Dry	Walked all trails. Mid day. Two other groups on trial w/ dogs on leads enjoying the day. No maps in entrance sign.

8/1/17	Schroeter	1.1	Sunny	86	Dry	Beautiful day, nothing untoward to report
7/18/17	Cherry Hill	2.1	Sunny	90	Dry	Grass recently mown, save western section of North Trail. 1 limb down on North Trail close to western edge. Middle of day. Miserably hot when exposed, just muggy in the woods. The Autumn Olive that I cropped on 6/27 appear to be dead dead dead.
7/17/17	Schoerter		Sunny	85	Dry	Grass recently mown. Nothing untoward to report.
7/10/17	Cherry Hill	1.4	Sunny	80's	Dry	Nothing special to report
7/8/17	Schoerter	1.1	Sunny	74	Dry	Nothing untoward to report
7/6/17	Schoeter	1.1	Sunny	80's	Dry	Nothing untoward. Picked up some trash.
7/4/17	Cherry Hill	1.4	Sunny	75	Dry	Nothing untoward to report

8 A.

ADA Requirements for Playgrounds

MADE SIMPLE

by John McGovern

THE AMERICANS WITH DISABILITIES ACT (ADA) imposes simple concepts, like nondiscrimination, on many environments, including playgrounds. Playgrounds are, however, complex environments. The resulting requirements for new playgrounds as well as existing ones vary based on whether they are government-owned, privately-owned, or owned by homeowners' associations or churches. This can seem daunting, but with some basic information as guidance, the requirements can be met.

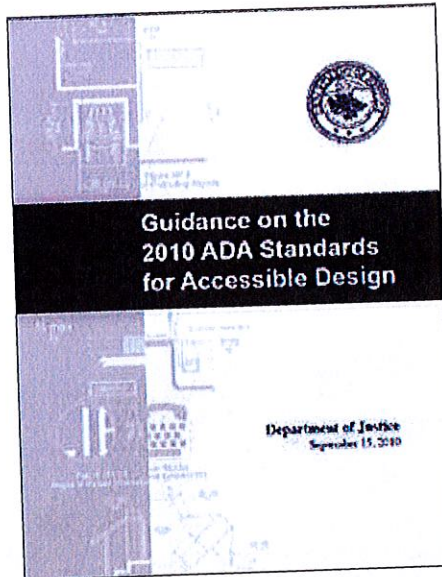
Accessibility Requirements in General

The Americans with Disabilities Act became effective for states, local governments, businesses, and nonprofits on January 26, 1992. The ADA is the first federal civil rights law that applies whether an entity has received federal funds or not.

The ADA requires states, local governments, businesses, and nonprofits to adhere to the most current design standard published by the U.S. Department of Justice (US DOJ). The standard in effect from 1992 to 2012 was known as ADA Accessibility Guidelines (ADAAG), or the 1991 Standard. There was another standard too, the Uniform Federal Accessibility Standard (UFAS), and it was primarily used by federal agencies. It can no longer be used by local governments today. The 1991 Standard adequately address elements in typical built environments, but did not address playgrounds, fitness facilities, sports fields, golf, aquatics, or other recreation spaces.

In 2004, after 11 years of research, public participation, and careful study, the U.S. Access Board published the 2004 ADA/ABA Guidelines. In the title, the ADA refers to the Americans with Disabilities Act (ADA). The ABA refers to the 1968 Architectural Barriers Act (ABA), which applies to sites and facilities funded or operated by federal agencies. The 2004 ADA/ABA Guidelines

are important because for the first time they provide both scoping and technical requirements for playgrounds and many other (but not all) types of recreation and park environments. The 2004 work did not address outdoor recreation areas, such as trails, campsites, beaches, picnic areas, and the like.



In 2010, the U.S. Department of Justice adopted and published the aptly-named 2010 Standards for Accessible Design, which was the 2004 ADA/ABA Guidelines with a new cover and narrative. This is appropriate; only US DOJ has this type of rulemaking authority for states, local governments, businesses, and nonprofits.

In determining the requirement to meet, do not forget states, city, and county ordinances. Where a state, county, or city has an access requirement that is more stringent than the 2010 Standards, it must be followed for the aspect that is more stringent. For example, were a state access code to ban engineered wood fiber (EWF), which at least three states have considered, then that would be viewed as more stringent than the 2010

Standards. Your agency would have to comply with that ban on EWF.

Other federal agencies with rulemaking authority have adopted the 2004 work. In 2006, the General Services Administration (GSA) adopted the 2004 ADA/ABA Guidelines for their operations, such as federal employee daycare sites. In 2008, the Department of Defense (DoD) did the same, and the DoD Standard applies to all military installations, contractors, and facilities.

Treatment of State and Local Government Playgrounds (New and Existing)

All 50 states are subject to Title II of the ADA. The Title II regulation, last published by the US DOJ on September 14, 2010, and effective March 15, 2011, requires all 89,004 states and local governments to, in section 35.151, adhere to the 2010 Standards.

A state department of conservation in, as an example, Florida or New Mexico, when designing or constructing a new playground, must adhere to the 2010 Standards regarding these new playgrounds (new is after March 15, 2012). It must also, in grant programs to local entities, compel compliance with the 2010 Standards.

A county, city, school district, or special purpose park and recreation district such as, for example, Morris County (NJ), Las Vegas (NV), or Deerfield Park District (IL), when designing or constructing a new playground, must adhere to the 2010 Standards regarding these new playgrounds (new is after March 15, 2012).

Regarding existing playgrounds, a state, county, city, school district, or special purpose park and recreation district is required by Title II section 35.105 to evaluate its existing sites for compliance with the only playground access standard, the 2010 Standards. Many in the world of playgrounds refer to this as an access audit. At every existing playground, a listing of every access

deficit is compiled and a recommended solution for each is considered.

The US DOJ has made it clear that not necessarily every existing site needs to be made accessible (see section 35.150(a)(1)). Therefore, integral to this process is the application of the complex “program access test for existing facilities” found at Title II 35.150. The process should yield the number of agency playgrounds that will, over time, be made accessible. That retrofit work must comply with the 2010 Standards.

But...how many recurring sites, such as playgrounds, must be made accessible? There is no US DOJ ratio here. It is a community-by-community solution. Many entities work hard to integrate these retrofits into already existing capital plans and playground replacement schedules. Units of state and local government must convert this work product into a 35.150(d) transition plan.

The transition plan must identify every barrier at every site, note the solution, name the person responsible for barrier removal, and note the date by which barrier removal will occur. As a smart practice most agencies also include the retrofit cost.

For both new and existing sites, ASTM Standards, such as F1487, F1292, and F1951,

which are incorporated by reference into the 2010 Standards, should be blended in. Here it is interesting to note that the ASTM term “public use” has a definition that does not perfectly match the ADA Title II and ADA Title III definitions for playgrounds owned and operated by certain types of entities. It is unlikely this will change. It is therefore important to be aware of this difference and be able to use all three terms appropriately.

Treatment of New and Existing Playgrounds at Privately Owned Places of Public Accommodation (Businesses and Nonprofits)

There are more than 7,000,000 businesses and nonprofits that open their doors to the public and in return for cash, provide goods, services, facilities, or experiences. These privately owned places of public accommodation are subject to Title III of the ADA. The Title III regulation, last published by the US DOJ on September 14, 2010, and effective March 15, 2011, requires the businesses and nonprofits with playgrounds to, in section 36.401, adhere to the 2010 Standards.

There is a great variance between different entities within Title III. Everything from

a YMCA to a fast-food restaurant to a resort hotel may have a playground, and all are subject to the 2010 Standards.

A for-profit child care entity, such as a KinderCare, must, as an example, when designing or constructing a new playground, adhere to the 2010 Standards regarding new playgrounds (new is after March 15, 2012). That very same KinderCare has an economic incentive for compliance as well. Both a tax credit (up to \$5,000) and a tax deduction (up to \$15,000) were created by Congress to aid businesses in compliance. Nonprofits and governments don't benefit from this approach.

Regarding existing playgrounds at a nonprofit or business, Title III section 36.304 requires the removal of barriers at a playground when doing so is “readily achievable.” That is defined as “easily accomplishable and able to be carried out without much difficulty or expense.” That definition allows for a lot of work that is “readily achievable.” It is likely though that a complex or costly retrofit at a Title III entity playground will not be readily achievable.

Of course, knowing what barriers to remove requires first an access audit. ADA Title III is silent on whether a business or



(Courtesy of John McGovern)

SUBSCRIBE TO PLAY AND PLAYGROUND MAGAZINE FREE AT PLAYGROUNDPROFESSIONALS.COM/SUBSCRIBE



nonprofit is required to have an access audit. By inference one is inferred, but it is not a black-and-white requirement as it is for states and local governments.

It is critical here that the approaches for existing playgrounds be kept separate. The program access test is radically different from the readily achievable barrier removal test. Confusing them could be disastrous for playground professionals and playground owners and operators. Quoting Dr. Egon Spengler, "Don't cross the streams."

For both new and existing sites, do remember to blend in the more stringent state and local codes.

For both new and existing sites, do blend in ASTM Standards, such as F1487, F1292, and F1951, which are incorporated by reference into the 2010 Standards. Remember that the ASTM term "public use" has a definition that does not perfectly match the ADA Title II and ADA Title III definitions for playgrounds owned and operated by certain types of entities.

How Does the ADA Apply to Playgrounds at Private Schools?

A privately owned school is a Title III public accommodation. A private school with

a playground is a Title III entity and is subject to the 2010 Standards and Title III.

How Does this Apply to Playgrounds at Churches?

Churches (and synagogues and other places of worship) are exempt from Title III. However, take great caution here. Many states have a civil rights law or access code that does cover churches and other places of worship. For example, Illinois has two statutes, the Human Rights Act and the Environmental Barriers Act, and both apply to churches.

It is always better to believe a faith-based entity is covered by an access requirement, and then find out it isn't, than to believe it isn't, and then find out it is. Aside from that, spiritually, wouldn't a faith-based entity want people with and without disabilities to interact together?

How Does this Apply to Playgrounds at a Homeowners Association (HOA)?

A homeowners association (HOA) is not a local government, nor is it a business or nonprofit open to the public. Therefore, it is not covered by Title II or Title III. There is

some news here and a caution as well.

First, the U.S. Department of Housing and Urban Development (HUD) has not adopted the 2004 ADA/ABA Guidelines. That means the play area requirements are not mandated by HUD. Today, HUD uses the Uniform Federal Accessibility Standards, which do not address sports fields, playgrounds, sports courts, pools, golf courses, fitness centers, and more. Why HUD continues to use old UFAS, and why HUD has a standard that does not address any recreation elements, is not clear. However, that is the status today.

Additionally, some housing may indeed be subject to Title II. Local government affordable housing is clearly a "program" of local government. That means common areas, such as fitness centers, playgrounds, and swimming pools, will therefore be subject to Title I and the 2010 Standards. The point here: be clear about who and what the housing is.

In April of 2013, the HUD and the US DOJ published a joint statement regarding accessibility and housing. There are some grey areas. Perhaps the most important is that a playground at an HOA, if used only by residents and their invited guests, is likely exempt from the ADA. But if the HOA



allows members of the general public to use the playground, it converts the playground into a Title III entity.

Again, look for state, county, or city codes that may apply. There are some HOAs that have more than 40,000 residents. It seems contradictory to have a massive exception to access requirements here. But a call to the US DOJ technical assistance line at (202) 514-0301 will confirm that in general, the HOA playground need not comply with the 2010 Standards.

That does not mean it need not comply with ASTM standards, however. That includes F1292 and F1951. An HOA cannot decide if it will follow F1292 and ignore F1951.

What are the Rules for Grandfathering?

Trick question: there is no grandfather clause in either ADA Title II or ADA Title III. Do not use this phrase.

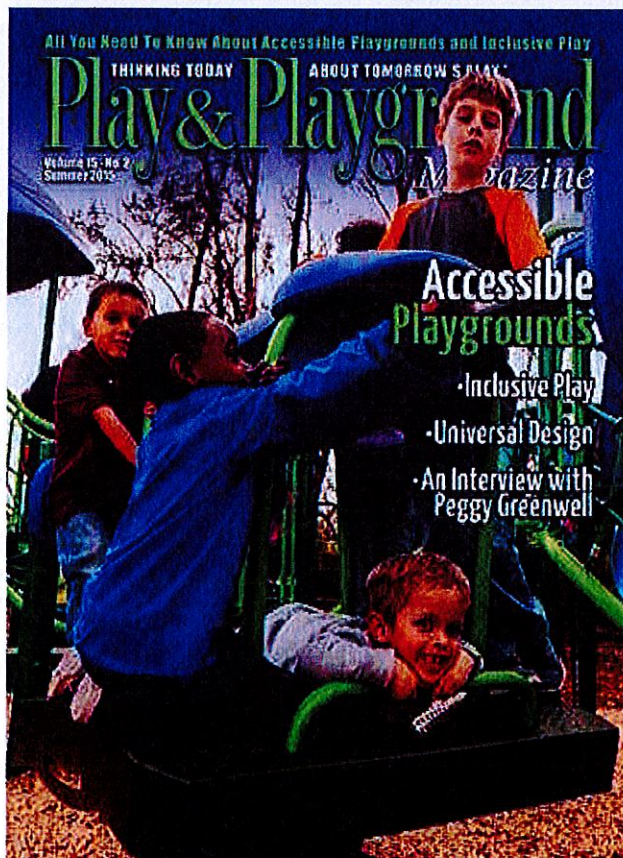
After the evaluation, there may indeed be a state or local government (Title II) playground that is not made accessible because of the program access test. Or, there may be a business or nonprofit playground (Title III) that is not made accessible because doing so is not readily achievable. Or it may not be made accessible because it is technically infeasible. Know all of the 2010 Standards requirements.

Any Smart Practices or Resources in this Area?

The U.S. Department of Justice provides good technical assistance regarding policies, programs, and more. For information, visit their website at www.ada.gov or call (202) 514-0301.

ABOUT THE AUTHOR:

John N. McGovern is the President of Recreation Accessibility Consultants (RAC). He started his career in parks and recreation in 1975 in New Mexico, and moved to Illinois for work at one of the unique special recreation associations. He started RAC in 2008 and helps governments, nonprofits, and businesses discover ways to make access easy, not complex. www.rac-llc.com



SUBSCRIBE TO PLAY AND PLAYGROUND MAGAZINE FREE AT PLAYGROUNDPROFESSIONALS.COM/SUBSCRIBE



2017 Special Events / Dixboro Attendance Calendar (Fall/Winter)

<u>EVENT</u>	<u>EVENT TIME</u>	<u>EVENT DATE</u>	<u>COMMISSIONER(S)</u>
Kickball	11:00am - 2:00pm	Saturday, September 9th	Martha Kern-Boprie Paula Jefferson Nahid Sanii-Yahyai
Dixboro Market	3:00pm - 7:00pm	Friday, September 29th	Terry Lee Lansing
Pumpkin Carving	11:00am - 2:00pm	Saturday, October 21st	Martha Kern-Boprie Terry Lee Lansing Sandi Lopez Nahid Sanii-Yahyai
Dixboro Market: Trunk or Treat!	3:00pm - 7:00pm	Friday, October 27th	Terry Lee Lansing Bernedia Word Paula Jefferson
Christmas Tree Lighting w/Santa Clause	6:00pm - 8:00pm	Saturday, December 2nd	Bernedia word Martha Kern-Boprie Marion Morris Nahid Sanii-Yahyai Sandi Lopez

83



Dixboro Church

Connect. Grow. Serve.

86.

Rev. Tonya Arnesen
Lead Pastor
(586) 292-1036

Rev. Mary Hagley
Deacon
(734) 652-5389

5221 Church Road
Ann Arbor, Michigan 48105
(734) 665-5632
dumc@dixborochurch.org
www.dixborochurch.org

September 6, 2017

Dear, *Juan Bradford*

I'm writing to invite you and your staff to join us for the 2nd Annual First Responders/Community Leaders **Thank You Event** on Sunday, October 1st. Once again, the people of Dixboro United Methodist Church (at Plymouth Rd. & Cherry Hill) would like to offer our thanks for your service. Here's what we have in mind:

- Join us for 10:00 am worship, when we will recognize first responders and community leaders, and offer a time of prayer and blessing on your work.
- From 11:30 - 1:30 pm, we'll host a **BBQ on the Dixboro Village Green**. If first responders are on duty, we ask them to wear their uniforms. If off duty, we encourage them to come and enjoy lunch with their family members. We'll have games for the children and a few drawings to win gift certificates from local restaurants and vendors. There is absolutely NO CHARGE - this is our gift to you and your staff.
- During the picnic, we'd like to discuss the most pressing needs in our community, and will seek your suggestions for how Dixboro UMC might help meet those needs.
- If you wish, I will conduct a "blessing of the fleet" -- so bring your squad cars, service animals, fire trucks, etc.
- And we have a baseball diamond on our Village Green -- so if you'd like to organize a game (fire vs police? Superior Twp vs AA Twp?) -- you'll have a captive audience.

It is our hope that at the end of the day our sense of community will be enhanced, new friendships will have begun, and we will leave with a deeper appreciation for the gift of life we share together. Please email or call me at your earlier convenience -- I'd like to confirm your interest and discuss specific ways we can promote this event with your staff.

Be blessed -- and be a blessing today.

Rev. Tonya Arnesen, Lead Pastor
Dixboro United Methodist Church



First Responders Thank You Picnic

From Dixboro United Methodist Church

*We invite all of our first responders from Ann Arbor,
Superior Township, Washtenaw County and Ypsilanti.*

Sunday October 1, 2017

Please join Dixboro Church for a day of celebration to honor those who protect and serve our communities.

Family Fun Games

Blessing of the Fleet Vehicles

Drawings for Prizes

Dixboro United Methodist Church
5221 Church Rd. Ann Arbor, MI 48105
734-665-5632
dixborochurch.org

Worship Service
10:00 am

Worship in our historic sanctuary for a special time of recognition and blessing for first responders.

Thank you Picnic on the Village Green
11:30-1:30 pm

Please bring your family members to help celebrate with us!

12 SEPT 2017 (cont.)

This needs extra help. It is beyond my own capacity to deal with it. In the autumn the leaves turn yellow and the plants are easy to see. I am asking whether one extra person to be available to go one time to CHNP with me about this. It requires walking carefully because there is a lot of deadwood lying around.

The accompanying informational sheet with a picture is the one I did in 2017, which is based on my own observation, including on my own property. I might add that, if the ground is soft, a young plant can be pulled up, up-rooting it completely. I am trying other things but with too few instances to advise more about larger plants.

This is in addition to a communication I put in last year suggesting a burn.

Weed #3: For several years near Post #2 at CHNP there has been the large ragweed (*Ambrosia trifida*) and I removed it. However in my recent observations at CHNP I saw it WNW of Post #2 in a larger area which I had not checked before. Pulling it out gets rid of it but that also needs extra help. It is easy to see in late August when it is making pollen and that is bad for allergy.

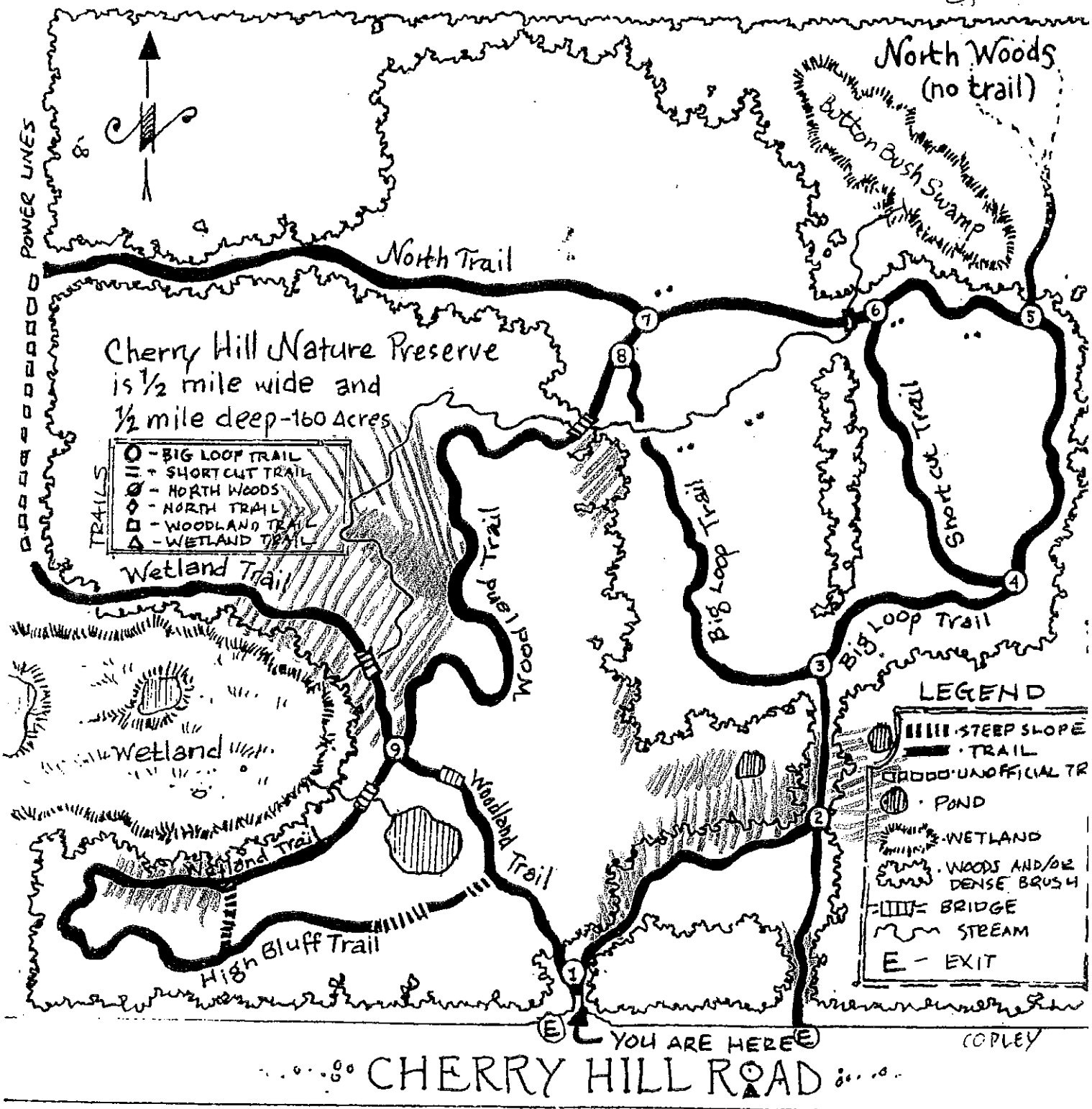
This communication TOTAL:

This letter	2 sht.
Maps	2 sht.
Information sheets	2 sht.



734-4826398

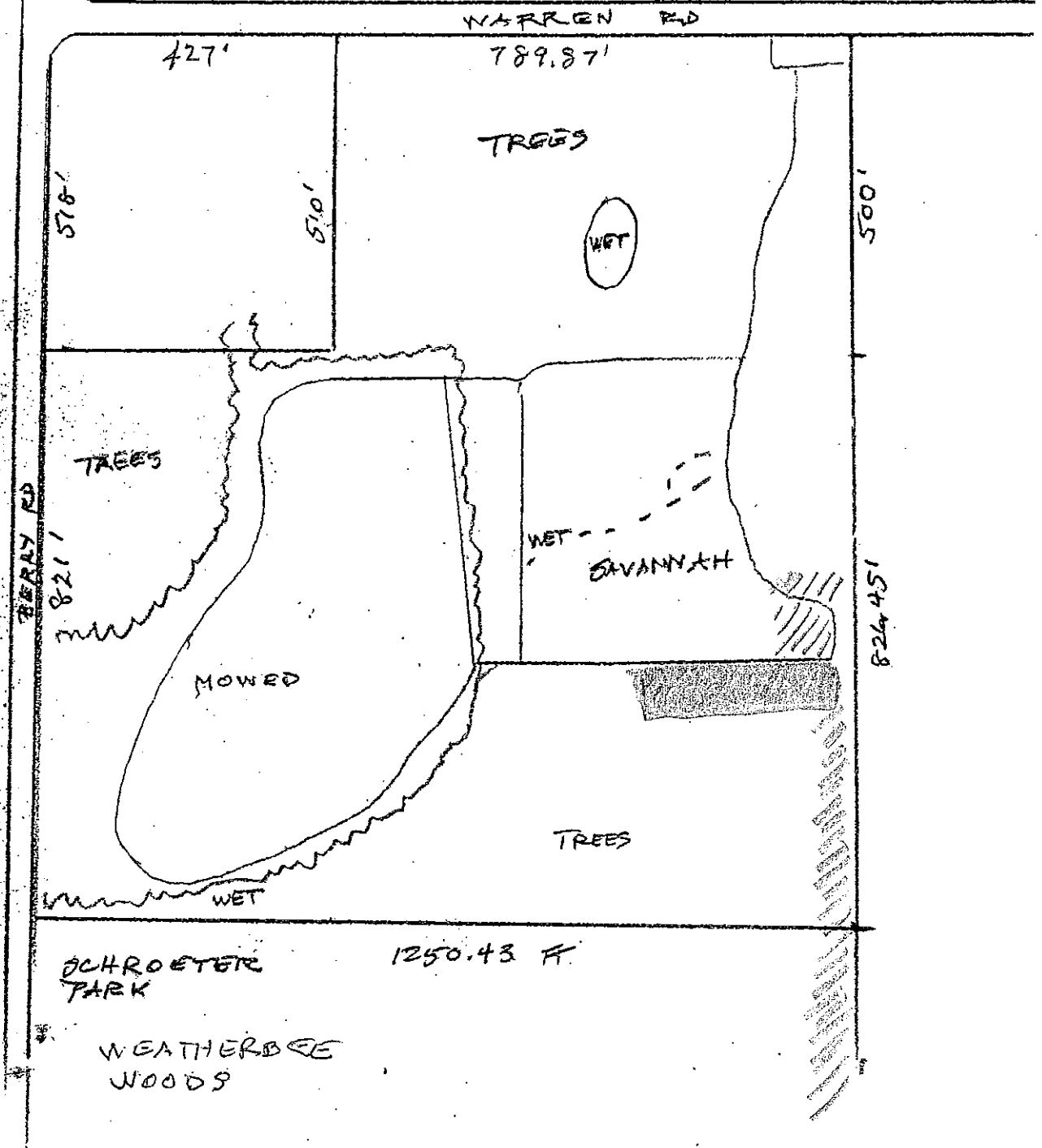
SLC



'S' 'Y' 'X' 'W' 'V' 'U' 'T' 'S' 'R' 'Q' 'P' 'O' 'N' 'M' 'L' 'K' 'J' 'I' 'H' 'G' 'F' 'E' 'D' 'C' 'B' 'A'

HAKELA V.

22 AUG 2017
SK



THE WRONG KIND OF BITTERSWEET

The American Bittersweet vine makes a colorful autumn display of red seeds after their capsules open. The vine climbs a tree, or it may grow as a large mound. It is hardy and the botanical name is *Celastrus scandens*.

A different Bittersweet, which also makes colorful seeds, was introduced from Asia as a garden ornamental. However it is very prolific from seed and escaped from cultivation, and locally it is a difficult weed. It can grow in many kinds of conditions, and new seedlings can start in fairly dense shade. The name is *Celastrus orbiculata*. The big objection is that its habit of growth is spiral wrapped tightly along the stems of shrubs or trees on which it is climbing, and it strangles them, thereafter growing as a mound on the deadwood. It can be difficult to eliminate. Locally, some plants are 10 or 15 years old, and many new seedlings have appeared recently.

How to tell which is which: The American bittersweet grows with its main stem going straight up the side of a tree. Short horizontal branches hold it in place, but not in a way which chokes a tree. Further up, many branches twine in all directions, irregularly and loosely. The seeds are in tight clusters at the ends of short branches, but some plants are staminate and only make pollen, not seeds.

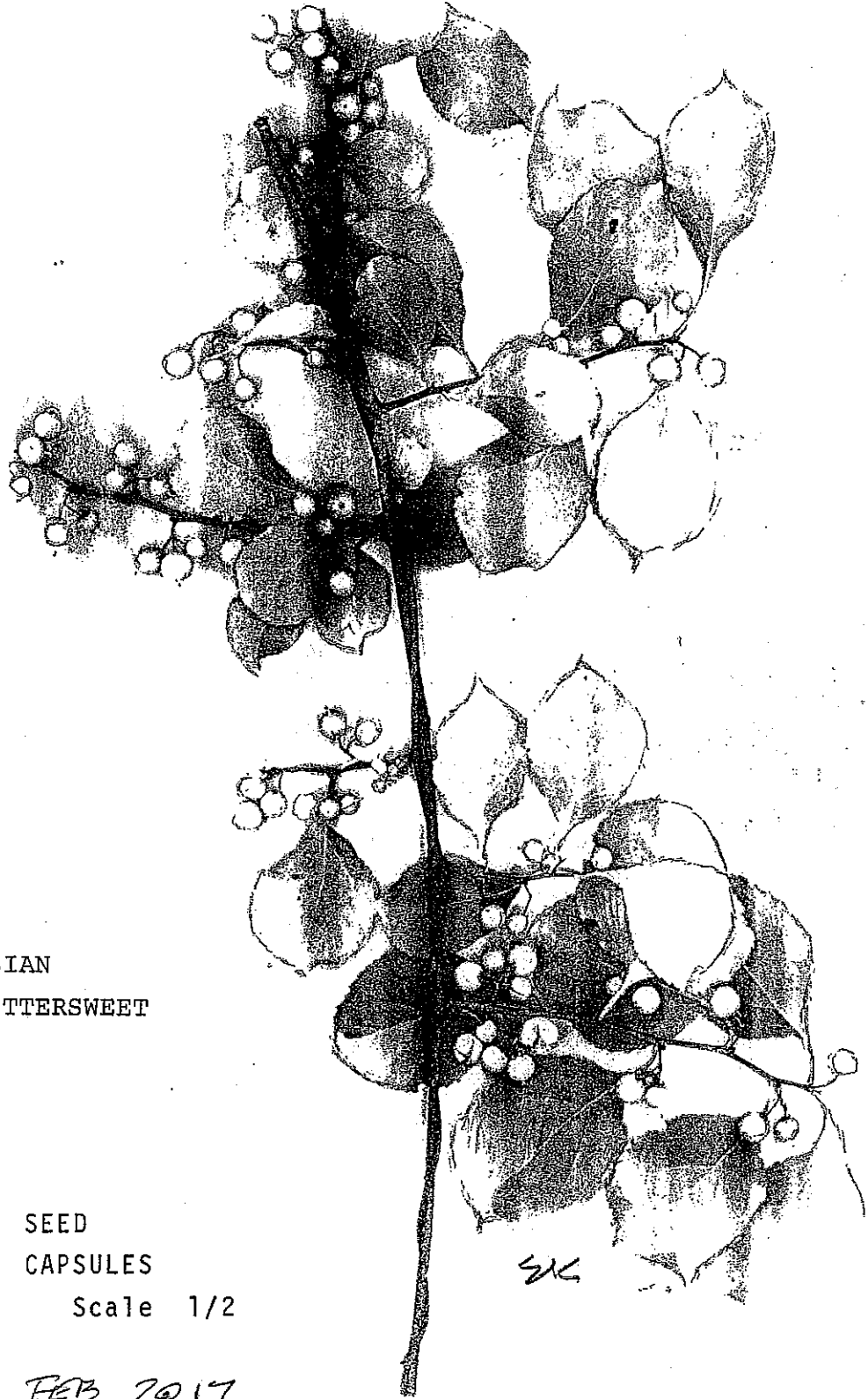
The easiest way to recognize the Asian Bittersweet is by the continuous tight spiral which is the way it grows along its support. The shape of the leaves is variable. The seeds are scattered irregularly along the smaller branches, and it only takes one plant to make seeds. The spiral wrap is apparent in the winter. Late autumn after many trees and shrubs have dropped their leaves is a time when it is easy to see new plants, whose leaves are still yellow or green.

Why it is difficult to eliminate: Very young plants of the Asian bittersweet have a group of fine roots at the bottom of the stem, so the entire plant can be dug up. However, when the plant has become older, it makes an underground runner, dark brown and smooth and 1/8 inch or larger diameter. If a piece of this runner remains in the ground after a plant is partially dug up, it can re-start as a new plant. Also, an older plant makes additional vertical stems along this runner over an increasing area. Partial digging has the result that the area is infested with separate independent plants.

The sooner new plants are recognized and action begins, the better. Doing a burn apparently can kill young plants and also the smaller stems of the large plants, does not kill an established plant. Cutting a vine back prevents a crop of seeds the coming season. Repeated cutting, or choking sprouting stems by laying out a layer of old newspapers or other material is suggested, but persistent attention is necessary.

Concern about herbicide: Many herbicides are available off-the-shelf, some with characteristics which should be of serious concern. Some can kill many kinds of things, not only plants; some can travel readily through the soil; some last a long time; there is potential to get into waterways, swamps, or ground water.

FEB 2017



ASIAN
BITTERSWEET

SEED
CAPSULES
Scale 1/2

FEB. 2017

SK

ONE OF THE STICK-TIGHTS

Hakelia virginiana is the formal name for a particularly obnoxious stick-tight, which has several common names. Most often it grows in partial shade. The illustration shows a plant which was growing in shade and was still entirely green. Other plants may be 3 or 4 feet high with side branches a foot long. Side branches break off the main stem easily. The "nutlets" are in a row and are firmly attached to their part of the stem so that the entire row of them comes along and sticks to a garment or to an animal. Barbed prickles attach them. When they are green they are not as difficult to remove as later after they have turned brown.

A plant lives two years. During the first year round dark green leaves are close to the ground, 3 or 4 inches diameter on a strong plant, other plants smaller. If the ground is soft they can be pulled up and uprooted completely.

In the second year it sends up the vertical stem. Until it grows the horizontal branches with small white flowers or the stick-tights, it may not be easy to recognize.

It is prolific by these seeds, but it only increases by seeds. Removing the top parts with only the flowers or seeds prevents it from making more plants. The remaining lower leafy part can be up-rooted or broken off and need not be taken away, providing their condition can not make more branches with seeds.

Some plants growing in shade may become black with mildew, but can still make a few seeds.

The plants showed up first along trails in the parks, having come in on garments or dogs, and then they subsequently spread over a wider area. If only one plant escapes notice and remains that will be enough to result in new plants.

SEPT, 2017

HAKELIA VIRGINIANA



SEPT 2017
EK

9/A.

Oakbrook Park ADA Sidewalk

Proposed Budget \$10,000.00

Install 260 linear feet of 6 foot wide sidewalk from street to playstructure to provide ADA access.

<u>Company</u>	<u>Bid</u>
Playword Midstates	\$10,500.00
True North Asphalt	\$10,920.00
GatlinByrd Cement	\$12,980.00



Quotation

Date	Quote Number
8/2/2017	87276

Playworld Midstates
 5828 Zarley St Suite B
 New Albany, OH 43054

Sold To
Superior Township Parks & Recreation Department 575 E. Clark Road Ypsilanti, MI 48198

Ship To	
Oak Brook Park Berkshire Ypsilanti, MI	
County	Washtenaw

Rep	Project	Type	Ship Contact/Number	P.O. No.
BJK	2017/8 Site Improvements	Park	Matt H	

Qty	Item	Description	Unit Price	Total
1	Installation	Installation Charges: Excavate for pathway grading spoils onsite Provide 4" base and 4" concrete for 6' wide side walk w/ saw cut joints approximately 260 LF. Restoration by owner.	11,840.00	11,840.00
	Customer Discounts	Customer Discounts	-1,340.00	-1,340.00

Subtotal	\$10,500.00
Sales Tax (6.0%)	\$0.00
Total	\$10,500.00

TRUE NORTH ASPHALT

3345 Auburn Road
Suite 106
Rochester Hills, MI 48309
Main: 248-289-6826
Fax: 248-289-6837
www.truenorthasphalt.com

BILL TO:

Superior Township
Juan Bradford
575 E. Clark Rd.
Superior Twp., MI 48198
p. 734-480-5502 f.734-484-4883
jbradford@superior-twp.org

WORK PERFORMED AT:

Oakbrook Park
See Map

Quoted By: NSW

Date: 3/6/2017

We propose to perform the following work:

INSTALL 4" CONCRETE WALK (1,680 sqft) .

Grade and compact existing base as needed.
Install 4" of crushed 21AA concrete base
Form and pour 4" concrete walk 6'X280'.
Install control joints as needed.
Barricade off for proper cure time.

Concrete Walk Total \$10,920.00

Excludes: permits, inspections, undercutting of unsuitable sub base, restoration of striping, restoration of landscaping, repair to hidden structures, such as but not limited to irrigation lines, electrical lines, or anything not marked by the miss dig system. Permits applied for and secured by True North Asphalt will be reimbursed cost plus 20% processing fee or \$300 min charge. Access to the property will need to be maintained at all times during the project or additional charges will apply.

If existing asphalt is thicker than stated above \$100 per ton additional charge will apply.
Any undercutting of excavated material in or out is \$45 per ton additional charge will apply.
Not responsible for sealer damage caused by weather.

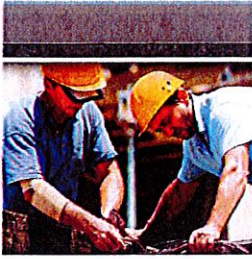
Payment Terms: Due upon completion unless otherwise stated.

This Proposal May Be Withdrawn By Us If Not Accepted Within 30 Days.

By signing below agrees to the payment terms detailed and Terms and Conditions set forth below on all pages of the contract.

Accepted by _____

Date _____



ESTIMATE

GatlinByrd Cement Corp.

GatlinByrd Cement
8786 Tamarack Ln
Ypsilanti, Michigan 48197
United States

Mobile: (734)323-8882
www.GBCement.com

BILL TO

Juan Bradford
Juan Bradford
8460 Berkshire dr
Superior Charter twp, Mi, 48198
United States

7346491991
jbradford@superior-twp.org

Estimate Number: E-335

Estimate Date: August 9, 2017

Expires On: August 9, 2017

Grand Total (USD): \$12,980.00

Service	Quantity	Price	Amount
Sidewalk Sidewalk 6 x 260	1	\$0.00	\$0.00
Description Grass and dirt removed as needed, add 21 AA stone as needed. Form ,set , compacted, poured saw cut ,and finished	1	\$12,980.00	\$12,980.00

Total: \$12,980.00

Grand Total (USD): \$12,980.00

Notes

Thank You For Your Business!
GBC

INVOICE GL DISTRIBUTION REPORT FOR CHARTER TOWNSHIP OF SUPERIOR
 POST DATES 08/29/2017 - 09/25/2017
 JOURNALIZED
 PAID
 CHECK REGISTER

GL Number	GL Desc	Vendor	Invoice Description	Amount	Check #
Check 39648 508-755-920.000	UTILITIES	DTE ENERGY	ELECTRIC - PARKS BARN - AUG 17	36.57	39648
		Total For Check 39648		36.57	
Check 39673 508-000-289.000	DUE TO PAYROLL FUND	SUPERIOR TWP PAYROLL FUND	CASH TRANSFER 9/7/17 PAY	7,508.79	39673
		Total For Check 39673		7,508.79	
Check 39684 508-754-740.000	OPERATING SUPPLIES	BSN SPORTS	SPORT VESTS & MEGAPHONE	172.00	39684
		Total For Check 39684		172.00	
Check 39687 508-755-740.000	OPERATING SUPPLIES	CONGDON'S ACE HARDWARE	SHOP SUPPLIES	13.05	39687
		Total For Check 39687		13.05	
Check 39691 508-754-740.000	OPERATING SUPPLIES	GORDON FOOD SERVICE, INC.	KICKBALL DAY FOOD	28.45	39691
		Total For Check 39691		28.45	
Check 39692 508-755-740.000	OPERATING SUPPLIES	HOME DEPOT CREDIT SERVICE	SHOP SUPPLIES	44.67	39692
		Total For Check 39692		44.67	
Check 39695 508-751-860.000	TRANSPORTATION	JUAN BRADFORD	MILEAGE REIMBURSEMENT 7/10/17-8/21/17	150.94	39695
		Total For Check 39695		150.94	
Check 39698 508-754-850.000	TELECOMMUNICATIONS	PATRICK PIGOTT	CELL PHONE STIPEND - AUGUST 2017	31.97	39698
		Total For Check 39698		31.97	
Check 39701 508-756-740.000	OPERATING SUPPLIES	SUMMIT SUPPLY CORPORATION	PLAYGROUND SAFETY LABELS	144.45	39701
		Total For Check 39701		144.45	
Check 39702 508-000-289.000	DUE TO PAYROLL FUND	SUPERIOR TWP PAYROLL FUND	PENSION /HCSP - AUGUST 2017	926.86	39702
		Total For Check 39702		926.86	
Check 39714 508-754-740.000	OPERATING SUPPLIES	PARKWAY SERVICES	PORTA-JOHN FOR KICKBALL DAY	115.00	39714
		Total For Check 39714		115.00	
Check 39715 508-756-951.000	PROJECTS	PLAYWORLD MIDSTATES	SWINGS & HARDWARE @ HARVEST MOON PARK	614.23	39715
		Total For Check 39715		614.23	
Check 39717 508-756-951.000	PROJECTS	SNIDER RECREATION, INC.	PLAYGROUND TIMBERS @ HARVEST MOON	1,215.00	39717
		Total For Check 39717		1,215.00	
Check 39719 508-000-289.000	DUE TO PAYROLL FUND	SUPERIOR TWP PAYROLL FUND	CASH TRANSFER 9/21/17 PAY	7,276.19	39719
		Total For Check 39719		7,276.19	

11A

PAID

CHECK REGISTER

GL Number	GL Desc	Vendor	Invoice Description	Amount	Check #
Fund 508 PARKS & RECREATION					
		BRAFORD J	- JUAN BRADFORD	150.94	
		BSN SPORT	- BSN SPORTS	172.00	
		CONGDON	- CONGDON'S ACE HARDWARE	13.05	
		DTE ENERGY	- DTE ENERGY	36.57	
		GORDONFOOD	- GORDON FOOD SERVICE, INC.	28.45	
		HOMEDEPOT2	- HOME DEPOT CREDIT SERVICES	44.67	
		PARKWAYSER	- PARKWAY SERVICES	115.00	
		PIGOTT	- PATRICK PIGOTT	31.97	
		PLAYWORLD	- PLAYWORLD MIDSTATES	614.23	
		SNIDER R	- SNIDER RECREATION, INC.	1,215.00	
		SUMMIT	- SUMMIT SUPPLY CORPORATION	144.45	
		SUPPAY	- SUPERIOR TWP PAYROLL FUND	15,711.84	
		TOTAL FUND 508	PARKS & RECREATION	18,278.17	
Total For All Funds:				18,278.17	

--- FUND TOTALS BY VENDOR ---

GL NUMBER	DESCRIPTION	YTD BALANCE 08/31/2017	2017 AMENDED BUDGET	ACTIVITY FOR MONTH 08/31/17	AVAILABLE BALANCE	% BDGT USED	YTD BALANCE 08/31/2016
Fund 508 - PARKS & RECREATION							
Revenues							
Dept 000-REVENUE	GENERAL FUND CONTRIBUTION	167,801.32	251,702.00	20,975.17	83,900.68	66.67	162,914.00
508-000-588.000	GRANTS	0.00	0.00	0.00	0.00	0.00	837.72
508-000-590.000-BHCG	REIMBURSEMENT FOR LABOR COSTS	653.44	900.00	81.68	246.56	72.60	653.44
508-000-604.000	INTEREST ON RESERVES INCOME	593.91	650.00	0.00	56.09	91.37	488.93
508-000-663.000	DISPOSITION OF ASSETS	2,150.00	0.00	0.00	(2,150.00)	100.00	0.00
508-000-671.100	INSURANCE REIMBURSEMENTS INCOME	246.31	0.00	0.00	(246.31)	100.00	215.21
508-000-673.000	DONATIONS	100.00	100.00	0.00	0.00	100.00	1,151.35
508-000-696.000	APPROPRIATION FROM FUND BALANCE	0.00	54,071.00	0.00	54,071.00	0.00	0.00
508-000-699.000							
Total Dept 000-REVENUE		171,544.98	307,423.00	21,056.85	135,878.02	55.80	166,260.65
TOTAL REVENUES							
Total Dept 000-REVENUE		171,544.98	307,423.00	21,056.85	135,878.02	55.80	166,260.65
Expenditures							
Dept 751-PARK & REC. ADMINISTRATION	COMMISSION STIPENDS	4,031.00	7,813.00	518.00	3,782.00	51.59	5,000.00
508-751-701.000	SALARIES	23,774.60	32,140.00	2,856.63	8,365.40	73.97	20,402.72
508-751-702.000	TRAINING	944.00	0.00	0.00	(944.00)	100.00	0.00
508-751-710.000	OFFICE SUPPLIES	191.34	500.00	0.00	308.66	38.27	401.08
508-751-727.000	POSTAGE	0.00	100.00	0.00	100.00	0.00	0.00
508-751-728.000	PROFESSIONAL SERVICES - AUDIT	1,205.00	0.00	0.00	(1,205.00)	100.00	0.00
508-751-800.010	PROFESSIONAL SERVICES - OTHER	120.35	2,400.00	5.00	2,279.65	5.01	2,352.50
508-751-801.000	TELECOMMUNICATIONS	1,131.42	1,200.00	457.41	68.58	94.29	812.88
508-751-850.000	INSURANCE & BONDS	4,751.44	7,100.00	590.97	2,348.56	66.92	4,721.90
508-751-851.000	TRANSPORTATION	777.44	600.00	150.94	(177.44)	129.57	631.80
508-751-860.000	PRINTING & PUBLISHING	477.48	1,000.00	0.00	522.52	47.75	0.00
508-751-900.000	REPAIR & MAINTENANCE	0.00	500.00	0.00	500.00	0.00	0.00
508-751-930.000	MEMBERSHIPS & DUES	518.00	500.00	0.00	(18.00)	103.60	100.00
508-751-958.000	BANK FEES & CHARGES	33.72	50.00	0.00	16.28	67.44	42.46
508-751-963.000	EQUIPMENT UNDER \$5,000	149.99	2,000.00	0.00	1,850.01	7.50	0.00
508-751-981.000							
Total Dept 751-PARK & REC. ADMINISTRATION		38,105.78	55,903.00	4,578.95	17,797.22	68.16	34,465.34
Dept 754-RECREATION							
508-754-702.000	SALARIES	2,911.47	9,461.00	172.17	6,549.53	30.77	2,763.48
508-754-710.000	TRAINING	550.00	0.00	0.00	(550.00)	100.00	0.00
508-754-740.000	OPERATING SUPPLIES	1,717.15	3,000.00	288.62	1,282.85	57.24	907.43
508-754-850.000	TELECOMMUNICATIONS	255.76	400.00	31.97	144.24	63.94	255.76
508-754-860.000	TRANSPORTATION	0.00	100.00	0.00	100.00	0.00	0.00
508-754-930.000	REPAIR & MAINTENANCE	122.34	500.00	0.00	377.66	24.47	0.00
508-754-975.000	SIGNAGE	0.00	500.00	0.00	500.00	0.00	150.00
Total Dept 754-RECREATION		5,556.72	13,961.00	492.76	8,404.28	39.80	4,076.67
Dept 755-PARK MAINTENANCE							
508-755-702.000	SALARIES	61,068.31	100,655.00	10,291.04	39,586.69	60.67	60,687.12
508-755-717.000	TAXABLE BENEFITS	1,726.31	1,945.00	0.00	218.69	88.76	1,956.09
508-755-719.000	MISC UNEMPLOYMENT BENEFITS	350.06	0.00	350.06	(350.06)	100.00	0.00
508-755-740.000	OPERATING SUPPLIES	1,602.26	2,000.00	227.60	397.74	80.11	2,091.08
508-755-740.003	HERBICIDE (NON-SELECTIVE)	0.00	500.00	0.00	500.00	0.00	0.00
508-755-740.004	SAND-GRAVEL-BARK-SOIL	267.00	4,000.00	0.00	3,733.00	6.68	333.10

12 A

User: NANCY

DB: Superior Twp

PERIOD ENDING 08/31/2017

GL NUMBER	DESCRIPTION	YTD BALANCE 08/31/2017	AMENDED BUDGET 2017	ACTIVITY FOR MONTH 08/31/17	AVAILABLE BALANCE	% BGET USED	YTD BALANCE 08/31/2016
Fund 508 - PARKS & RECREATION							
Expenditures							
508-755-741.000	UNIFORMS	468.00	600.00	0.00	132.00	78.00	272.00
508-755-742.000	FUEL-LUBRICANTS	2,397.00	5,000.00	313.76	2,603.00	47.94	2,241.05
508-755-850.000	TELECOMMUNICATIONS	281.48	480.00	33.25	198.52	58.64	283.98
508-755-860.000	TRANSPORTATION	0.00	50.00	0.00	50.00	0.00	0.00
508-755-920.000	UTILITIES	341.41	350.00	36.57	8.59	97.55	222.52
508-755-930.000	REPAIR & MAINTENANCE	2,847.25	10,000.00	360.24	7,152.75	28.47	5,682.58
508-755-930.001	CONTROLLED BURNS	0.00	3,800.00	0.00	3,800.00	0.00	3,700.00
508-755-974.000	SMALL TOOLS/EQUIP UNDER \$5,000	0.00	0.00	0.00	0.00	0.00	399.00
508-755-975.000	SIGNAGE	0.00	100.00	0.00	100.00	0.00	600.00
508-755-980.000	EQUIPMENT OVER \$5,000	23,593.45	36,000.00	0.00	12,406.55	65.54	19,420.00
508-755-981.000	EQUIPMENT UNDER \$5,000	694.96	1,000.00	0.00	305.04	69.50	0.00
Total Dept 755-PARK MAINTENANCE		95,637.49	166,480.00	11,612.52	70,842.51	57.45	97,888.52
Dept 756-PARK DEVELOPMENT/IMPROVEMENT							
508-756-740.000	OPERATING SUPPLIES	344.40	500.00	344.40	155.60	68.88	1,191.90
508-756-947.000	GRANT EXPENDITURES	0.00	0.00	0.00	0.00	0.00	1,800.00
508-756-951.000	PROJECTS	0.00	50,000.00	0.00	50,000.00	0.00	14,284.75
Total Dept 756-PARK DEVELOPMENT/IMPROVEMENT		344.40	50,500.00	344.40	50,155.60	0.68	17,276.65
Dept 759-BHC GRANT							
508-759-702.000-BHCG	SALARIES	0.00	0.00	0.00	0.00	0.00	4,331.50
508-759-930.000-BHCG	REPAIR & MAINTENANCE	0.00	0.00	0.00	0.00	0.00	20,111.88
508-759-975.000-BHCG	SIGNAGE	0.00	0.00	0.00	0.00	0.00	1,617.94
508-759-977.000	EQUIPMENT	0.00	0.00	0.00	0.00	0.00	9,056.00
Total Dept 759-BHC GRANT		0.00	0.00	0.00	0.00	0.00	35,117.32
Dept 966-UNALLOCATED EXPENSES							
508-966-715.000	FICA	7,146.62	11,654.00	1,058.38	4,507.38	61.32	7,278.32
508-966-858.000	PENSION	7,560.98	8,925.00	926.86	1,364.02	84.72	7,342.90
Total Dept 966-UNALLOCATED EXPENSES		14,707.60	20,579.00	1,985.24	5,871.40	71.47	14,621.22
TOTAL EXPENDITURES		154,351.99	307,423.00	19,013.87	153,071.01	50.21	203,445.72
Fund 508 - PARKS & RECREATION:							
TOTAL REVENUES		171,544.98	307,423.00	21,056.85	135,878.02	55.80	166,260.65
TOTAL EXPENDITURES		154,351.99	307,423.00	19,013.87	153,071.01	50.21	203,445.72
NET OF REVENUES & EXPENDITURES		17,192.99	0.00	2,042.98	(17,192.99)	100.00	(37,185.07)

